



Integrating success.



# CONTENTS

Intro	1
Who is Stolze?	2
GreenV	3
Integrating success.	4
Electrical systems	5
Irrigation systems	6
Grow light	7
Automation	8
Climate control technology	9
Stolze Services	10
Utility buildings	12
Why Stolze?	13





Stolze is the leading specialist in electrical systems, irrigation systems, grow light, automation and climate control technology for the horticulture sector and associated utility buildings. We're passionate about technology.

Stolze carries out integrated horticultural projects all over the world for the professional cultivation of any desired crop; from vegetables to floriculture, and from functional foods to soft fruit. No two installations are the same, so we like to work alongside you to translate your requirements into a reliable, personalised solution.

This covers the entire process from design to realisation, tailored to your unique situation, whether it concerns a climate control computer or the full integration of all your systems. All installation work is carried out under our management. Our engineers design a solution tailored to your precise needs, following which our technicians and specialist subcontractors install all the components. Our supervisors guide this process from preparation to completion. After installation, we continue to be available for you 24/7 with a team of experienced service technicians.

## WHO IS STOLZE?

Stolze has enjoyed an outstanding reputation in international horticulture since 1969. With over 180 employees, Stolze has grown into the leading specialist in electrical systems, irrigation systems, grow light, automation and climate control technology.

Our company is based in Maasdijk, the Netherlands. We are in an easily accessible location, close to the transport hub and port of Rotterdam. With our worldwide network, we are

able to serve customers everywhere and provide 24/7 service.

We can take care of every aspect of your needs in terms of electrical systems, irrigation systems, grow light, automation and climate control technology. You can contact us with your requirements in any one of these areas, but our specialism is fully integrated complete projects. We believe that the best way to create an optimal installation is by perfectly coordinating all the disciplines involved.

### HortiQ certificate

Stolze is HortiQ certified. All our installations are built and installed in accordance with objective and verifiable quality standards. The HortiQ certificate is an internationally recognised quality standard.

**HortiQ** GREENHOUSE  
TECHNOLOGY  
CERTIFICATION



# GREEN : V

*Building Thriving Businesses*

GreenV comprises various individual horticultural companies that work alongside each other seamlessly. Each company supplies the best technology, products and services available in its category. Then jointly realise complete solutions.

Together with partners from both inside and outside the GreenV group, they form a well-oiled machine, which ensures the entire process, from design, implementation, delivery and operation to the local service, runs smoothly. No project is too large or too complex.

GreenV arranges integrated horticultural projects worldwide for the professional cultivation of any desired crop; everything from vegetables and soft fruit to floriculture and medicinal cannabis. The core of the approach is based on efficiency, manageability, scalability, and long-term reliability.

For more information about GreenV, visit: [greenv.com](http://greenv.com).



# Integrating success.



## One partner for the integration of all your systems and installations.

All our advanced systems and installations rely on efficiency, convenience and sustainability. The integration and automation of all systems and installations is crucial to ensure everything runs as a well-oiled machine.

Our specialism is delivering complete, integrated projects, which meet all your needs in the areas of electrical systems, irrigation systems, grow light, automation and climate technology. Creating an optimal installation depends on perfect coordination of all the disciplines involved.

Stolze knows from experience that no two installations are identical, because every

company is unique. Every crop has its own distinct requirements and so do the installations that fulfil them. The specific wishes of your business are paramount.

We combine your wishes as a customer with our in-house expertise at Stolze. This results in an optimal system with the right production and quality level for your company.

# ELECTRICAL SYSTEMS

The electrical system is the basis of your business operations. A good electrical connection is an absolute necessity for all the installations at your company to function properly. Furthermore, every modern company needs a process computer and the associated switch panels to manage and control all the vital functions and processes at play.

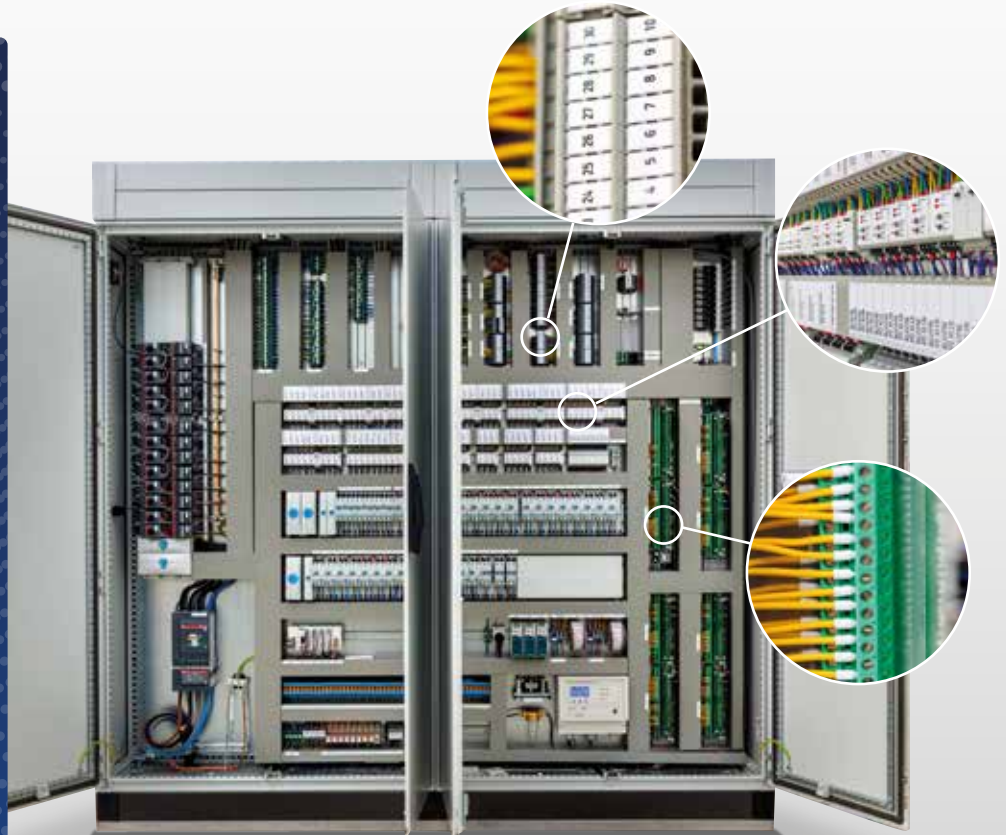
The switch panels and prefabricated cabling are designed and made-to-measure in our workshop. The process computer and control technology are integrated into these panels, so a major part of the installation work is already completed before components leave the workshop. This minimises the assembly time on site.

We supply tailor-made systems and installations, and supervise your project from the initial sketch to delivery. As you would expect, this is done in close cooperation with you; you assure that the delivered system will function perfectly. We safeguard the continuity of the installations we supply by offering maintenance and service.

Stolze designs, supplies and installs the entire electrical system for your company. This includes:

- Ⓢ Lighting
- Ⓢ Fans
- Ⓢ Screen systems
- Ⓢ Process automation
- Ⓢ Irrigation systems
- Ⓢ Heating and cooling

All systems and installations are fully integrated to create an end result that exceeds expectations.





## IRRIGATION SYSTEMS

Horticulture is highly dependent on accurate irrigation systems. Each crop has its own needs in terms of water and fertiliser for optimal growth. The technology behind irrigation systems is complex and wide-ranging, where accuracy and efficiency are key principles. Not surprising, considering resources are becoming scarcer. That demands optimisation of water management, where the overall picture of irrigation systems, irrigation units, water storage, water treatment and fertilisers has to be taken into account. Correctly positioned ground pipes are the foundation of a well-functioning system. We rely on excavation plans to ensure our experienced and skilled technicians install

all the pipework in the right place and at the desired level.

Stolze develops and designs individual irrigation units in 3D, which are then produced and assembled in our workshop. Our own switch panels, assembled with high-quality components, are fitted to the units. We mount all the components required, such as switch panels, pumps, filters and valves, in a stainless steel frame according to a previously designed layout. Thanks to the standardised structure of the units, Stolze is able to complete much of the

installation work in our own workshop. This approach means the unit can be rapidly commissioned on site.

When we design irrigation systems, our main priority is the importance of good yields for the grower and their crop: reliability, sustainability, and keeping costs down. We'd be happy to let you know which options would be best for your crops.



# GROW LIGHT

Modern horticulture goes hand-in-hand with the use of grow light. The potential growth of young plant material, vegetables, flowers and plants is fully exploited by artificially supplementing or extending the daylight period with LED, hybrid or SON-T lighting. The uniformity of light and light output are very important factors for maximising efficiency. Optimising yields depends on a carefully considered lighting plan.

At Stolze, we have extensive experience in installing grow light, and we closely follow new developments, such as cultivation without daylight, and vertical farming. We work with various reputable luminaire suppliers on designing the most efficient solution. Stolze produces the entire growlight installation under its own management. Switch panels are assembled in our workshop. The custom cable assemblies are made with latest technology in our automated cable factory. The installation can then be carried out quickly on site.



## Philips LED Horti Partner

Stolze is a Philips LED Horti Partner. Being a partner of Signify (the lighting division of Philips), we're closely involved in the development and innovation of LED lighting systems, such as switchable colours and dimmable LED modules. Signify supports its partners during projects and field tests. Knowledge and experience in the field of lighting plans, lighting recipes and installations are also shared. This means we're in a position to provide a solution for every situation requiring a successful crop with minimum energy consumption.

**PHILIPS**

LED Horti Partner

## Advantages of LED lighting

LED lighting offers many advantages, such as higher yields, earlier flowering, better maturation, more weight, faster root growth/germination, uniform balance of the plants, and control of plant growth. LEDs also last longer and consume less energy.



# AUTOMATION

We're a Priva Full Service Partner, and therefore a primary supplier of Priva computer systems. Depending on your requirements, we can also supply other brands of climate computers. Together, we select the best fitting solution. Climate control, water management, lighting controls and energy management can all be combined conveniently in a single climate computer. With this process computer, you can link and monitor all processes. The support of our suppliers technology and Stolze's know-how means you can be confident that system integration, as well as maintenance and any subsequent adjustments, will run smoothly. Stolze is a system integrator, so you can rely on us to supply a fully integrated solution which works properly and is supported.

# CLIMATE CONTROL TECHNOLOGY

Balance is the key word for every climate system. An installation with constant temperature distribution is required to grow an optimal product. Our calculations are based on achieving the best balance between quality, costs and energy consumption. Energy is the main factor in your installation, so it's important the heating system is properly developed and installed to maximise advantages in this area.

**Stolze supplies tailor-made solutions; our specialists design a climate system that flawlessly meets your requirements.**

**Stolze designs, assembles and installs:**

-  **Greenhouse heating and cooling systems**
-  **CO2 installations**
-  **CHP installations**
-  **Heat pump systems**
-  **Pad & Fan systems**





## STOLZE SERVICES

It's very important that your installations are managed and maintained properly. You can obviously contact Stolze for solving urgent problems, but we can also take care of preventive maintenance, inspections and advice.

### Acute malfunctions

Wear, leakage or fire can damage your installations. If you suffer an urgent problem that needs to be addressed as soon as possible, our service department is always on hand, 24 hours a day. In the event of a malfunction, our experienced service technicians will quickly get things back on track. Malfunctions are easy to report via the website, by phone or the Stolze app

### Avoid malfunctions and breakdowns with preventive maintenance

Prevention is better than cure; the philosophy behind Stolze Services. Your Stolze service agreement is a tailor-made service package for periodic preventive maintenance, inspections and support. An important step towards a future with less damage, disruption and unforeseen costs, and better continuity.

# 10 BENEFITS

Prevent damage and consequential damage

1



Guarantee the continuity of your production processes

2



Increase the accuracy of your installations

3



Longer lifespan

4



Predictable cost development

5



Less equipment downtime

6



Increased safety in the workplace

7



We take care of everything, so you can focus on cultivation

8



Optimisation of maintenance moments

9



Less administration

10



## UTILITY BUILDINGS

Stolze provides utility buildings related to horticulture, such as garden centres and offices, with irrigation systems, electrical systems, building management systems and climate control, among other things, from design to delivery.

Both inside and outside The Netherlands, we exploit our expertise with our own PLC solutions. We use these PLC systems to control the climate or lighting as desired.

PLC control is very flexible and can be operated remotely using a computer, touchscreen or your phone, so you can

view and control your system anytime, anywhere.

In addition, Stolze installs PV installations from start to finish. We advise you on the best solution for your situation, and make sure the installation fully complies with the applicable requirements of the SCIOS Scope 12 inspection for solar panels.





## WHY STOLZE?

With extensive experience worldwide, Stolze is the leading specialist in electrical systems, irrigation systems, grow light, automation and climate control technology for the horticulture sector and associated utility buildings. From design to execution, we do everything under our own management.

### The advantages:

- ☞ One partner for the integration of all your systems and installations.
- ☞ We offer a solution for every situation.
- ☞ We're specialists in complex installations.
- ☞ We're a Priva Full Service Partner and Philips LED Horti Partner.
- ☞ We rely on our own technicians and specialist subcontractors.
- ☞ Your installation is installed and maintained by a single installer, so you always have a fixed point of contact.
- ☞ We use high-quality materials and systems, built for the future.
- ☞ Our experienced service technicians are on hand 24/7.
- ☞ As a GreenV company we have a worldwide network of specialists.



+31 85 237 5000 | [info@stolze.nl](mailto:info@stolze.nl) | [stolze.nl/en](http://stolze.nl/en)