

## ANTI-GRASS MESH / WEED CONTROL MESH / GROUND COVER

Ground cover which is also popularly referred to as weed control mesh, and as can be understood from the name, it is a mesh that helps in controlling of growth of weeds. The weaving composition of these mesh makes sure that the water drains and directly infiltrates the soil without causing any kind of damage to the fabric and at the same time provides the best possible results for controlling of weeds as well as stability of the soil. The Weed Control Mesh or Ground Cover or Anti Grass Mesh is made up of 100 % polypropylene tape along with UV stabilizers, thereby ensuring a longer life span.



In addition to this, these ground covers are extremely lightweight in nature which make it quite easy and convenient to use. Most importantly, these covers are very easy to install and does not require any kind of additional labour for the completion of the installation process. The entire process of installation is completed within a short span of time. Moreover, the weed control mesh is very easy to fold and spread. They adhere to the ground appropriately and are resistant to tearing, piercing as well as weed penetration, thereby making the weed control mats a more cost-effective solution.



## APPLICATIONS OF ANTI GRASS MESH / WEED CONTROL MESH

The ground covers or weed control mesh are extremely versatile in nature and hence find a wide range of applications that are as discussed below :

- Agriculture

The weed control mats are readily used in agriculture in efficiently and effectively controlling growth of weeds to provide a much better yield of different types of crops.

- Nurseries

The ground covers are quite frequently used in nurseries to make sure that each of the plants are able to grow and develop properly without any kind of interference from the weeds.

It can defend against ultraviolet deterioration, decaying, and biological degradation and is unaffected to commonly encountered soil chemicals.

Ground cover fabric allows the water to seep through the soil yet prevents the mud to flow out and keep the surface neat and clean.

- Greenhouses

The weed control mats also find their application in the greenhouses to ensure proper growth and development of plants by the elimination of weeds that hinder their growth.

- Landscape Applications

These ground covers are also used for landscape applications in the gardens and lawns to make sure that there are no weeds. It is because of the fact that weeds damage the beauty and landscape of the gardens.

Apart from the ones mentioned above, there are a number of other applications of ground covers or weed control mats.

## ANTI INSECT MESH / ANTI TRIP MESH



It is the most natural form of prevention in cultivation without the use of pesticides (organic agriculture).

They allow air circulation inside the greenhouse, protecting it from the intensity of the wind. Better control of temperature and humidity inside the greenhouse. They generate a microclimate that ensures an increase in production. They regulate the entry of sunlight. They are used on the sides of greenhouses as a substitute for plastic for better ventilation. Our anti-insect meshes limit the presence of pests in greenhouse crops. They have been designed to offer you the greatest possible protection and effectiveness, with the highest quality. Its reduced pore size acts as a protective barrier against the passage of tiny insects. In the pollination of crops in greenhouses, they prevent the exit of insects. These insects, produce great damages in the fruits deteriorating their quality. In addition, they can also affect the integrity of the plant, with the consequent cost or loss that this entails for the farmer.

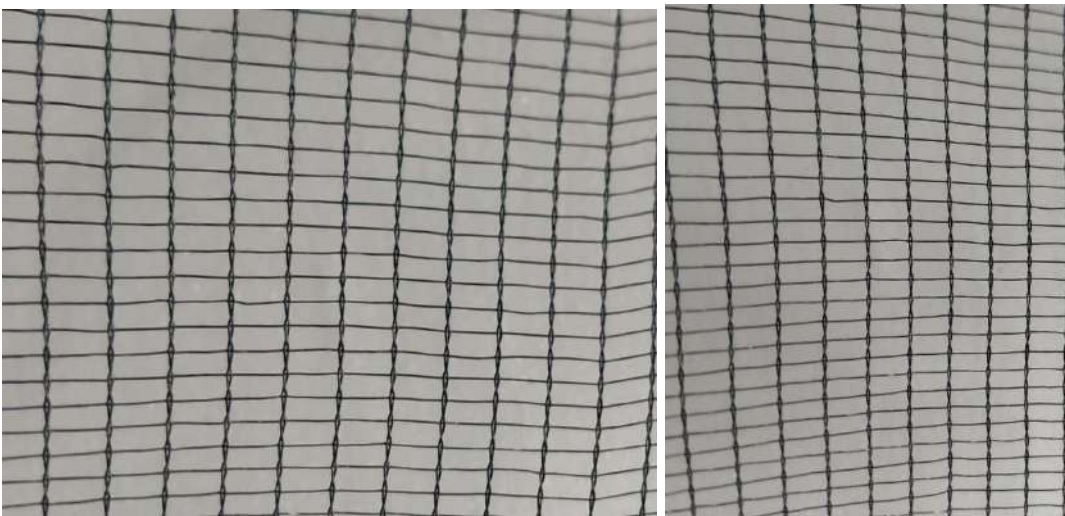
From MACFIL GLOBAL, we have worked on the design of an Anti -trip Mesh that eliminates the incidence of these possible diseases inside the greenhouse, being a physical obstacle to insects that carry viruses, such as whiteflies or aphids. In the same way, it avoids the exit of the insects used for the pollination of the greenhouse. It is originally made from High density polyethylene (HDPE) monofilament yarns.

### **Characteristics;**

- ❖ UV stabilized that guarantees long durability.
- ❖ Fairly tight fabric
- ❖ High tenacity and transparency
- ❖ Permeable to the passage of air and water
- ❖ Better environment for the plant

- ❖ Wind break protection
- ❖ Breathable fabric
- ❖ Sunshade protection
- ❖ Lower evaporation
- ❖ Light diffusion
- ❖ Different densities: 21x11,20x20, 10x10,16x10,20x10,40x40, 10x8.
- ❖ Tailor-made cloth making service.

## ANTI -HAIL MESH



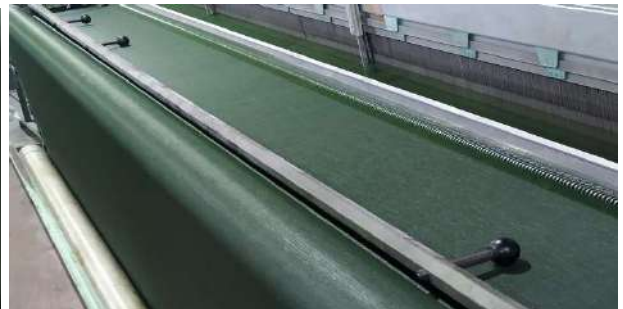
Gauze fabric / Anti hail mesh is made with monofilament yarn, designed for the protection of crops against hail and hail storms.

Material : High density polyethylene (HDPE).

- ❖ UV stabilized that guarantees long durability.
- ❖ Flexible, light and easy installation fabric.
- ❖ They contain additional reinforcing threads for better mechanical resistance when installed in the structure.
- ❖ Low shade level, allowing the passage of light, air and water.
- ❖ Fabric constructions and width can be as per requirement
- ❖ Avoid economic losses due to hailstorms.
- ❖ Protection against wind and small frosts.
- ❖ Low economic cost of the product.



## SILO-MESH



The silage process presents a technique of easy elaboration, which can be adapted by livestock producers to feed their animals.

Silage is the result of forage compaction that mixes with its own moisture and becomes a mass. This technique allows forage produced in excess to be stored, in order to face times of food scarcity, conserving all its nutritional value.

Our meshes for silage are reinforced fabrics specially designed to cover harvested products and other raw materials, constituting an optimal coverage system when positioned on the plastic film. That the silo does not breathe is essential to obtain a good ensiled material. The presence of air does not allow the desired anaerobic lactic fermentation to take place, and the putrefaction processes do, consequently losing its quality.

The high technology applied and the strict quality controls make them very resistant and durable over time.

Material: High Density Polyethylene (HDPE) monofilament yarns x raffia tape

- ❖ UV stabilized that guarantees long durability.
- ❖ Compact material very resistant to tearing.
- ❖ Very high stability to tensile forces.
- ❖ Standard fabric weights: 200 to 300 gr/m<sup>2</sup>.

- ❖ Colors: green, black.
- ❖ Longitudinal handles that facilitate the placement and fixing.
- ❖ High quality seams and hems.
- ❖ Tailor-made cloth making service.

## SHADE MESH



They are specially designed to provide a uniform shaded area that controls the amount of sunlight that crops and other application areas receive.

Made with monofilament yarn in the warp and raffia ribbon in the weft.

Material: Virgin High Density Polyethylene (HDPE)

#### Characteristic:

- ❖ UV stabilized that guarantees long durability.
- ❖ Different shade percentages: ref.40-50%, ref.60-70%, ref.80-90%, ref.100%.
- ❖ Available in different colors.
- ❖ Tailor-made cloth making service.
- ❖ Permeable to the passage of air and water.
- ❖ Easy installation.

#### Applications

- ❖ In agriculture, they are installed in macro-tunnels to shade crops.
- ❖ In livestock they are used to shade cattle.
- ❖ In aquaculture, they are used to provide total concealment in fish farms.
- ❖ In construction, they are installed in the fencing and fencing of works, in parking areas, as separation of houses, awnings for events, etc.

#### Benefits in agriculture

- ❖ They generate an ideal climate for better production.
- ❖ Control of the level of light that the plant receives.
- ❖ Temperature control in the cultivation area.
- ❖ Control of the passage of air inside the greenhouse.
- ❖ Eliminates plant stress and reduces water consumption.
- ❖ They offer protection against the wind.

### MIXED MESH

Monofilament fabric and raffia tape, designed for lateral closures of greenhouses and other growing areas, as well as for installation on greenhouse covers.

Unlike plastic, we obtain a good waterproofing by getting ventilation in the greenhouse.

Material: Virgin High Density Polyethylene (HDPE)

#### Characteristic:

- ❖ UV stabilized that guarantees long durability.
- ❖ Permeable to the passage of air and water.
- ❖ Colors: crystal, black.
- ❖ Seamless widths up to 5 meters.
- ❖ Special widths on request.