

# Let's think about a better cultivation process

Our systems provide more efficiency - in space and costs.

Whether you already have a plan or just don't know where to start, we provide you the best solution!



**HTVERBOOM**  
TRANSPORTSYSTEMEN



## We provide three kinds of cultivation systems:

- cultivation tables
- rolling tables
- benching systems: from manually to fully automated



### Cultivation tables

Our tables are manufactured within our own production facility. Therefore it is possible to implement customer-specific requirements and wishes into our standard design.

Different kind of trays could be inserted in order to optimize your growth:

- ebb and flow
- mesh wire

Ebb and flow trays are the most popular trays. They contribute to an optimal growing process.

Cultivation tables could be equipped with a levelling foot or with wheels when a mobile table is required.



### Rolling tables

These kind of tables enhance the utilization of your cultivation facility. The design of the table is adjusted, based on the available working space.

By minimizing the number of paths between the tables, your production capacity will increase significantly.

The rolling tables will be produced within our own production facility. All materials will be delivered in prefab components which will be locally assembled without any welding. It is possible to assemble the tables according of a supplied manual or by supervision.



**We design, fabricate and install growing systems with over 20 years of inhouse knowledge and experience. Installation could completely be taken care of by our mechanics or by your own staff under our supervision.**



## Mobile benching system

A mobile bench system is by far the most efficient cultivation system:

- Organized working areas for your employees
- Efficient water management
- Optimizing available growing area
- Possibility to fully automate the production process
- System will be fully tailor-made designed according to specific requirements and wishes
- Possibility of multiple growing layers

## Automatic machines

Mobile bench systems could be expanded with various machines to make your growing facility more efficient:

- Bench stacking machines
- Bench washing machines
- Bench elevators
- Potting machines
- Automatic train
- Robot systems for transplanting or harvesting



# Automation

A major advantage of H.T. Verboom is that we build the software ourselves. Our team of programmers always provide you the best yet simple controlling software to automate your mobile bench system at its very best.



## Why you want to have our HortiTrack system-software:

- Easy to control by computer, tablet or even mobile phone.
- Real time visualization of bench locations.
- Easy to create orders for moving the benches, both single as entire rows of benches.
- Display of the final destination of the benches.
- Loggings of the bench movements and positions.



**Interested?**

**Ask for an inquiry via [sales@htverboom.nl](mailto:sales@htverboom.nl) or call us on +31 - (0)174 - 41 37 66.**

**Any questions? Feel free to contact us.**



## **Why H.T. Verboom?**

- Over 20 years of experience in horticultural systems
- Affordable but reliable quality
- Motivated engineers who love to be challenged
- No-nonsense-attitude
- Service and support adjusted to your needs

**H.T. Verboom Transportsystemen B.V.**

**Hoefsmid 8 2292 JJ Wateringen The Netherlands**

**Turn key projects**

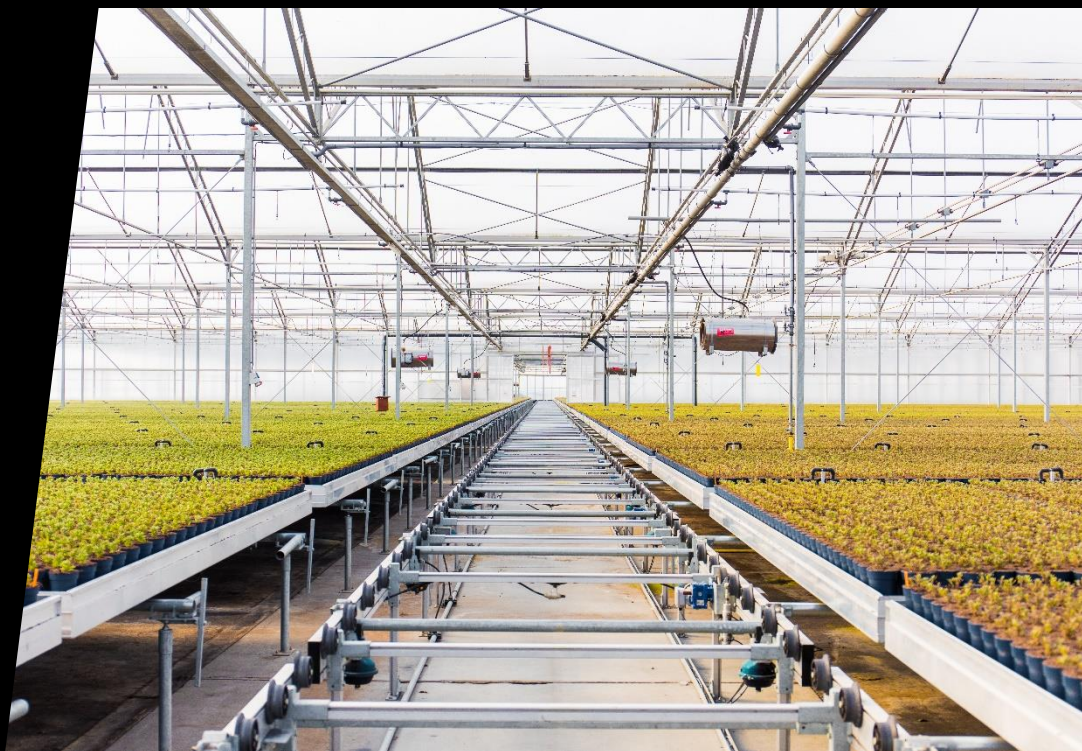
**H.T. Verboom could be your partner!**



Are you considering establishing a whole new greenhouse or refurbish your current one?

We work with experts of the greenhouse industry and could arrange your greenhouse technology from lights to heating to a complete automated system.

Please contact our sales team if you would like to know more or receive an inquiry.



[sales@htverboom.nl](mailto:sales@htverboom.nl)

+31 (0)174 41 37 66

[www.htverboom.com](http://www.htverboom.com)