



**Deforche
Construction
Group**

Creative with greenhouse &
climate technology



www.deforchegroup.com



PREFACE

Bringing nature indoors

Building with glass is the future. We use our knowledge of greenhouse technology to create inspiring and light-filled environments for active living. We exist for business people, researchers, private individuals, horticulturists, growers and developers

CEO - Deforche Construction Group



OUR ——— MISSION

Bring light into your project

ENORMOUS POTENTIAL

As a building material, glass has enormous potential to meet today's challenges, ranging from sustainability, circular construction, energy efficiency and work environment, to name but a few.

At Deforche Construction Group, we see it as our mission to tackle these challenges.

OUR PROMISE

Using steel- or aluminium-encased glass, we create **micro-climates** that are **sustainable, green and socially responsible**. Our aim is to harmonise creativity with innovation, at the same time drawing on our experience, technical knowledge and eye for design. For Deforche Construction Group, glass is often more than just a functional solution. Our promise: literally and figuratively, we bring light to your project.

Our people work with a passion and you notice that in the collaboration; co-creation is the key to success.



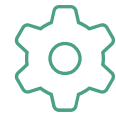
OUR ———— VALUES

Our clear principles



CREATIVE & INNOVATIVE

Deforche Construction Group takes a creative approach to innovation. Thanks to our extensive knowledge and experience, we always deliver high-quality and intelligent solutions for every project.



SOLUTION-ORIENTED & ENTERPRISING

Whatever your budget, our aim is to work purposefully and optimise the client's investment budget. We always respond with options and solutions. Our approach is to not only promote efficiency at project level but also to create a good working relationship.



PASSION & PRIDE

Greenhouse technology is our passion. It is this infectious enthusiasm that engages our clients and employees and brings them on board. The end result we achieve is a shared achievement that everyone can be proud of.

We want to surpass the original idea.

OUR ———— HISTORY

International expert

PIONEERING ROLE

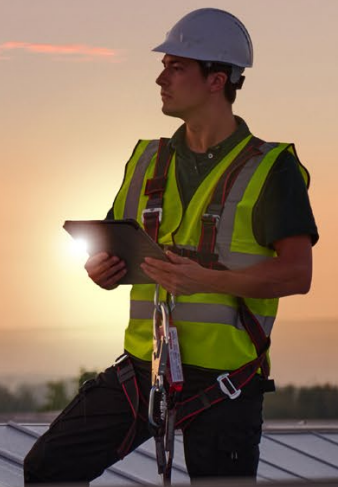
Back in 1932, when the Deforche Construction Group (DCG) was founded, the company specialised in the construction of traditional timber greenhouses. It was only in 1958 when the next generation of Deforches took the helm that the Deforche Construction Group really started to take off. The company turned the sector on its head with the introduction of steel and metal in greenhouse construction and spearheaded a pioneering role for itself.

At the same time we follow our established Deforche approach, where a **strong client-relationship** is key. Today, our clients are integral members of our project team: the greater their involvement, the more successful the project.

The expertise we have built up over the last century is now recognised internationally. We have become an **international expert** in the design and construction of steel, glass and aluminium greenhouse structures. Each of our projects tells its own story: the story of how we have utilised our technical expertise to provide optimum climate control.

KNOWLEDGE CENTRE

We continue this tradition to this day. As pioneers within the sector, the Deforche Construction Group has the agility to effortlessly adapt to changes and continuously innovate to meet the needs of our clients. **As an industry knowledge centre**, we are always on the lookout for the latest trends and new technologies.





We create with our knowledge and solutions a unique story for every customer.



OUR SOLUTIONS

Create together

That's what it's all about at Deforche Construction Group. A seamless customer journey is key. As a client, you are an integral member of our project team. Our collaborative approach ensures a process that is transparent, speedy and efficient in which you are closely involved, in six steps, until your project is realised:



1. CONCEPT

We work together with you to outline the expectations in the concept file, which sets out the ambitious objective of your project. The concept file contains all essential timings and milestones, in addition to detailed drawings, a general plan and a principle outline. Once the file has been approved, the project moves onto the next step: engineering.



2. ENGINEERING

We draw up the internal production drawings and model the project in professional design software. The model is then used to design all the parts drawings required for production.



3. PRODUCTION

Our qualified employees produce the production orders/ building elements in our own production plant. The complete order is then transported to the project site.



4. ASSEMBLY

At the project site, the Deforche Construction Group team carries out the assembly with the greatest care. Members of the assembly team will be happy to talk to you about their working methods, and are in direct contact with the Project Manager who oversees the progress of the project.



5. COMPLETION

Our goal? A smooth delivery of your project. We do our utmost to complete the project on time and to the highest standards of quality and precision, making your project a success.



6. AFTER-SALES SERVICE

You can count on our after-sales service. Your Deforche Construction Group Service Manager will contact you personally at the time of completion.





GROUP ——— COMPANIES

Group companies, so many opportunities

At Hedafor we focus on plant life, at Forzon we focus on people and create pleasant environments and at Thermoflor we focus on entrepreneurs and their customers. By focusing on the destinations rather than the construction, we make a difference.



**Deforche
Construction
Group**

+32 (0)51 30 37 01
info@deforchegroup.com
www.deforchegroup.com



HEDAFOR

Creating bright spaces
for research and growth



FORZON

Creating bright spaces
for people and nature



THERMOFLOR

Creating bright spaces
for retail and trade



 HEDAFOR



 FORZON



 THERMOFLOR



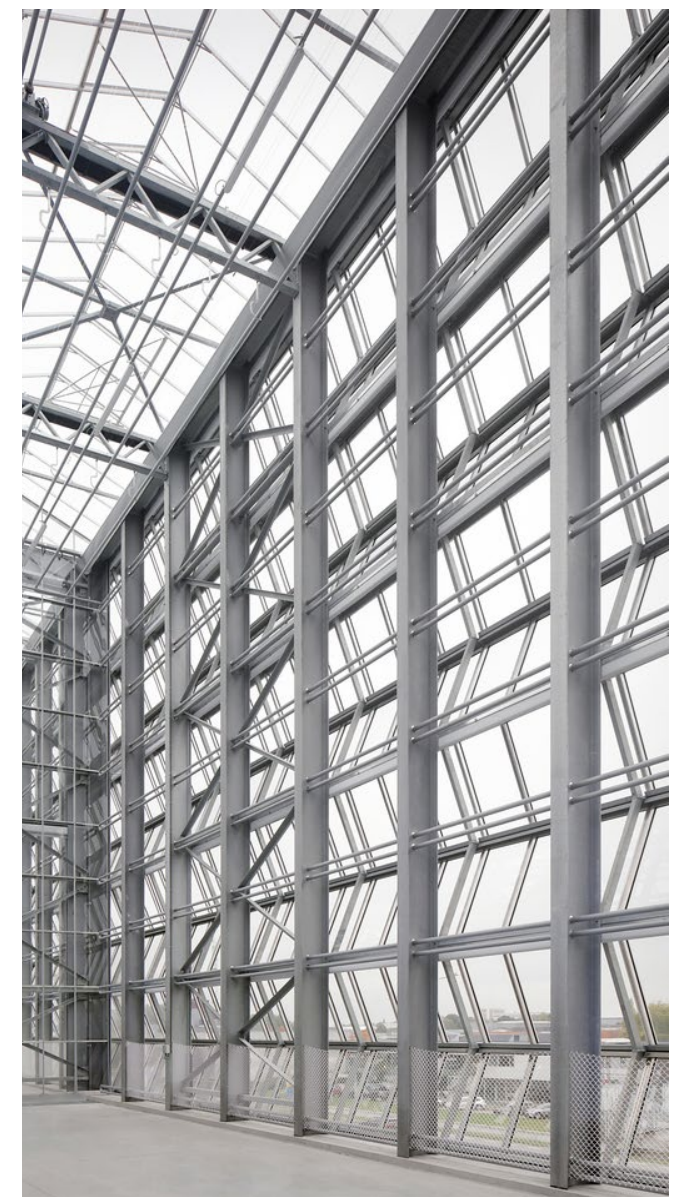
HEDA FOR

Hedafor works with ambitious horticulturists, growers and visionary researchers looking for the best environment for horticulture, botanic culture and plant research. Together, we look for functional, high-quality, high-tech and sustainable solutions for the **optimum growth of plants**. Our solutions create indoor and outdoor experiences that connect people with nature. Thanks to our 90 years of **experience in greenhouse construction** and technology, combined with our **creativity and innovation**, we bring light to all our projects.

CASE ————— HEDA FOR

Welcome to Agrotopia, the utopia of greenhouse construction

Agrotopia in Roeselare, Europe's largest rooftop greenhouse, is an ambitious project for research and exhibition of the vegetable growing industry. This unique research facility of Inagro is a driving force for the horticulture of the future.





FORZON

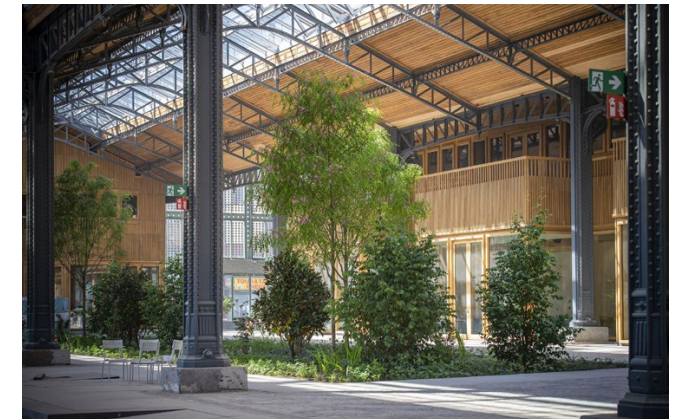
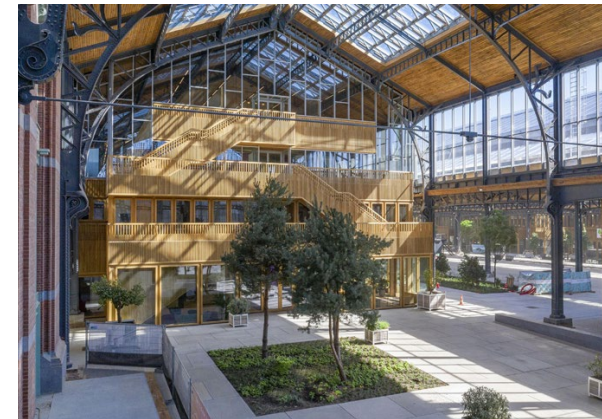
Forzon works with developers who champion the use of integrated **architectural glass roof structures within urban environments**. We create innovative indoor and outdoor designs and our creativity and vision help to inspire architects, property developers, contractors and investors.

Forzon's approach is to think out-of-the-box and deliver high-quality design that is always stylish and distinctive. We have the in-house **know-how, innovative spirit and drive for quality** to offer tailor-made solutions for a range of challenges, from skylights, domes, canopies, roof lights and photovoltaic walls to saw-tooth roofs. We not only bring light to all our projects, our roof structures are also designed to ensure the perfect climate within.

CASE ————— FORZON

Gare Maritime

Forzon skylights make a dynamic contribution to the indoor climate. Natural daylight is used as much as possible and ventilation through the skylights provides refreshment in the summer so that energy consumption for cooling is unnecessary.





THERMOFLOR

Thermoflor works with companies that are ambitious. Our solutions for garden centres, retail and department stores are based on years of expertise in greenhouse technology. **Complex constructions** in glass, steel and aluminium are turned into beautiful, **eye-catching solutions** which provide an **ideal climate for your customers and products**, from turnkey projects, to renovation and innovation. Thermoflor allows you to create a smart framework that focuses on delivering a **sparkling experience**. We bring light to your project.



CASE ————— THERMOFLOR

Intratuin Deventer

This magnificent garden centre is a world full of experiences. The building consists of modern 12.80 m wide spans and has an additional retail area of 6,500 m² and 2,000 m² on the upper floor. Several concept stores and the wonderful variety of greenery make shopping extremely pleasant.





GROUP COMPANIES

- Hedafor Creating bright spaces for research & growth
- Forzon Creating bright spaces for people & nature
- Thermoflor Creating bright spaces for retail & trade

www.deforchegroup.com