

neuberger.

# profile

The company information for our customers and business partners



Automatic. Efficient.

Demand-oriented building system

# Modern, future-proof building automation

With a building system designed by Neuberger you benefit from closely meshed working system components in your building. From the very first contact on we provide for a fast and solution-oriented realization of your project. During the complete working out and realization of your individual automation solution, a competent contact person will be always at your disposal in case of any questions concerning the building system. By combining short communication paths, highest quality standards and consequent transparency of all automation steps we are able to provide the maximum possible efficiency to assure a successful execution.

## [Contents](#)

- 04-05 Business activities
- 06-07 Individual solutions
- 08-09 Open systems
- 10-15 References





We can always provide the correct solution to meet your requirements. [Automatic.](#) [Valuable.](#)

# Benefit from our range of services

## Building automtion



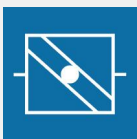
### Heating / Cooling

Efficient regulations for fossil and renewable energies.  
Minimal operating costs through modern and intelligent solutions.



### Air conditioning / ventilation technology

Pleasant room climate through optimal energy use.



### Smoke extraction and fire protection

Safety-related controls.



## Room automation



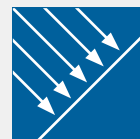
### Heating / Cooling / RLT

Variable room concept for a flexible adjustment of the utilization requirements.



### Lighting

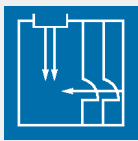
Light control considering external brightness and room occupancy.



### Sun protection

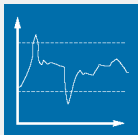
Avoiding heat loads by using the heat. The detection of the position of the sun makes it possible.

## Pharmaceutical / Laboratory / Pharmacy



### Interlock control

Integration into the central GMP monitoring with all the advantages of cross-functional networking.



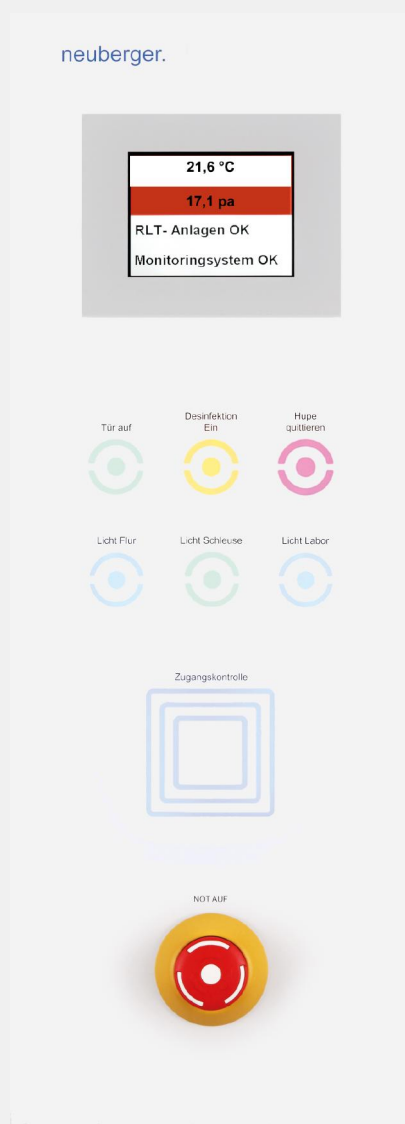
### GMP monitoring system

Solutions concerning to FDA 21 CFR Part 11.



### Validation / qualification

according to GMP guide lines  
Realisation according to GAMP5  
and according to GxP guide lines.



## Process technology



### Swimming pools

Monitoring of the water quality,  
Automation of the bath water  
technology, highest ease of use  
for the operators.



### Sewage plants

Automation of the system  
technology for environmentally  
friendly water treatment.



### Refrigerators / Cold rooms

Regulation, controlling and  
monitoring of cooling and  
freezing units.

You have a goal, we have the experience. **Automatic. Competent.**

# It starts with your individual solution

From the very first contact until the later support service Neuberger is always at your disposal as a competent partner and develops solutions according to your individual requirements. We provide highest quality of our products and services. Of course, all of our company divisions are certified in pursuance of DIN EN ISO 9001.

In order to meet even the highest quality and safety requirements of the pharmaceutical industry, we embedded the GMP\* Directives in our Quality Management System.

\*GMP = Good Manufacturing Practice, the world-wide strictest production directives – in pursuance of the American Food and Drug Association (FDA).

Analysis and suggested solution

Transparent price and service definition



Project planning

Software development



Production



Complete quality management

Installation and commissioning



Unlimited spare parts supply



Training



Maintenance  
Support and Hotline

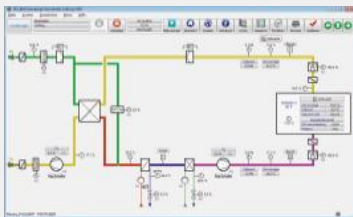
Certified quality management in all levels of automation. Automatic. Professional.

# Open systems for building automation

## ProGrafNT

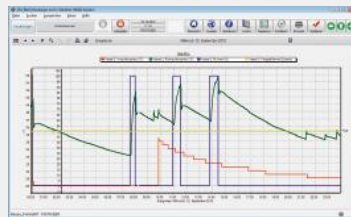
Building control and management system

### Operation and visualisation



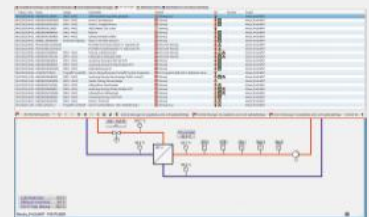
- No limit of information points
- Graphical timer
- User management

### Archive



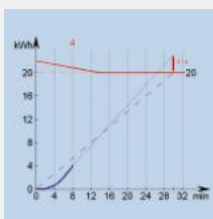
- Individual evaluations
- SQL data bases
- Trending, event archive

### Event and alarm management



- Forwarding via e-mail, SMS...
- Alarming according to shift schedule
- Evaluation for optimisation

### E-MAX



- Peak load limit
- Energy data management
- Operating cost reduction

### Weather forecast



- Integration of the weather forecast
- Individual methods
- High energy savings

### Energy management according to DIN EN ISO 50001

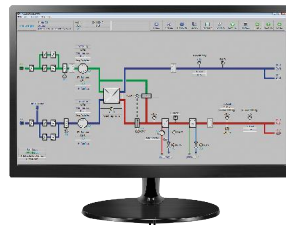


- Data collection and monitoring
- Monitoring and diagnosis
- Energy information system
- Reports and data export





Remote maintenance / diagnosis /  
alarms  
via SMS, e-mail, web browser



ProGraNT  
Building control and  
management system

Integration of further  
building systems  
BMA, EMA, ELT,  
ZUKO,...

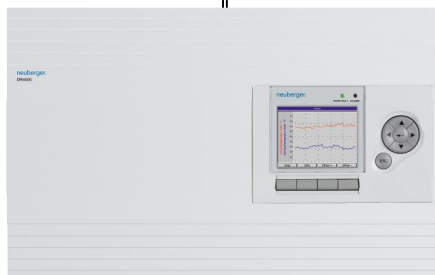
Web portal, Intranet, Ethernet, TCP/IP, DSL, VPN,  
BACnet IP, OPC, PROFIBUS, LON



PMC2 automation station 4000



PMC2 automation station 6000



PMC2 compact automation station DR4000



Room automation  
ER4000



Room automation  
ER3000

Decide independently on the future system selection. Automatic. Customer-oriented.

# Our goal are satisfied customers



Stadtwerke Schwaebisch Hall

We already cooperated successfully with many established companies at home and abroad, which contacts us to solve the most different problems.

Thus, our competence and experience in building automation ranges from kindergarten through the partial automation of medium-sized companies to the complete project planning and implementation of large orders such as the European Central Bank in Frankfurt am Main.

## Energy supply

[EBM, Muenchenstein \(Switzerland\)](#)

[Mainova, Frankfurt am Main](#)

[MVV Energie, Mannheim](#)

[Stadtwerke, Bad Brueckenau](#)

[Stadtwerke, Crailsheim](#)

[Stadtwerke, Jessen](#)

[Stadtwerke, Lohr am Main](#)

[Stadtwerke, Munich](#)

[Stadtwerke, Quickborn](#)

[Stadtwerke, Rothenburg o.d.T.](#)

[Stadtwerke, Schwaebisch-Hall](#)

[Stadtwerke, Sindelfingen](#)

[Stadtwerke, Traunreut](#)

[Stadtwerke, Tuebingen](#)

[Stadtwerke, Wertheim](#)



Mainova, Frankfurt am Main



Solebad, Schwabisch Hall

## Bath technology

Badeparadies Eiswiese, Goettingen

Dantebad, Munich

Freibad, Feuchtwangen

Freizeitbad „Die Insel“, Winsen / Luhe

Friederiken Therme, Bad Langensalza

Hallenbad, Einbeck

Hallenbad, Freilassing

Hallenbad, Rothenburg o.d.T.

Nautica die Wasserwelt, Magdeburg

Olympiaschwimmhalle, Munich

Schenkenseebad und Solebad, Schwabisch Hall

Schwimmhalle, Halle an der Saale

Schwimmzentrum, Itzehoe

Schyrenbad, Munich

## Healthcare / Pharmacies

BfA - Kliniken

Bezirksklinikum Ansbach

Caritas-Krankenhaus, Bad Mergentheim

Evangelisches Diakoniewerk, Schwabisch Hall

Helios Kliniken, Krefeld, Northheim, Wuppertal

Heilig Geist-Krankenhaus, Cologne

Ilmtalklinik, Pfaffenhofen

Kantonsspital, Baden (Switzerland)

Klinikum Dritter Orden, Munich

Klinik Rothenburg ANregiomed, Rothenburg o.d.T.

Otto-von-Guericke-Universität, Magdeburg - Medizinische Fakultät

Ries-Apotheke, Noerdlingen

Sana Klinikum, Offenbach

Spital Lachen (Switzerland)

St. Elisabeth Krankenhaus, Ravensburg

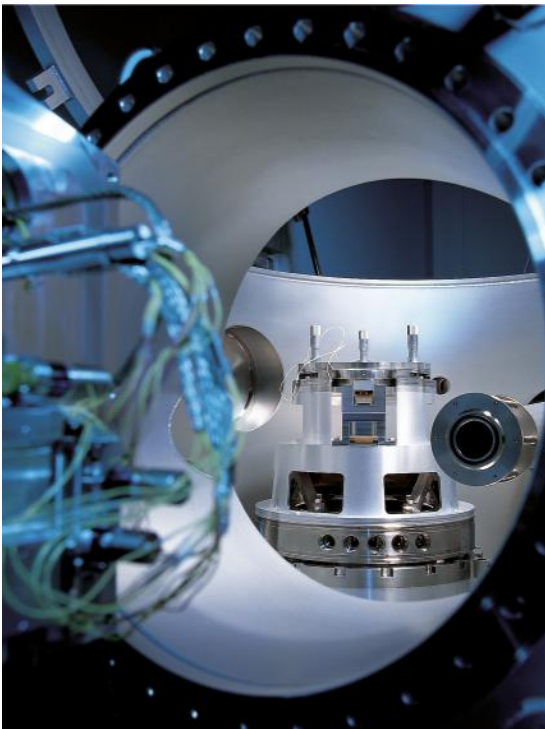
Städtisches Klinikum Munich / Neuperlach

Universitätsklinikum Heidelberg



Klinikum, Munich / Neuperlach

# References



Carl Zeiss, Oberkochen

Photo: Carl Zeiss

## Industry and research

Europäisches Patentamt, Munich

Fachhochschule, Trier

Fraunhofer-Institut, Kaiserslautern

Geobra Brandstätter, Zirndorf (Playmobil)

Glasi, Hergiswil (Switzerland)

Helmholtz-Zentrum, Munich

Institut für Halbleiterphysik, Frankfurt (Oder)

Krauss Maffei, Munich

Max-Planck-Institute

PARItec, Weilheim

Planzer, Pratteln (Switzerland)

Rehau, Feuchtwangen

Thomann, Treppendorf

Weishaupt, Schwendi

WIKA (Germany, Austria, Poland)

Wittenstein, Igersheim

## Industry and research

Aeropharm, Rudolstadt

AMS Graz, Austria Microsystems (Austria)

Biozentrum, Martinsried

Bitzer, Sindelfingen

BMG MIS, Ulm

Bosch Rexroth, Schweinfurt

Carl Zeiss, Oberkochen

Ceramtec, Marktrechwitz

Conti Temic microelectronic, Nuremberg

Deutsche Bahn, Rechenzentrum, Berlin

Deutsches Krebsforschungszentrum, Heidelberg

DLR, Oberpfaffenhofen

Druckzentrum Rhein-Main, Ruesselsheim

EBM Pabst, Mulfingen



Biozentrum, Martinsried

Photo: LMU



Holopack 2000, Sulzbach / Laufen

## Pharmaceutical industry

Intervet, Cologne

Kneipp Werke, Ochsenfurt / Hohestadt

LEO Laboratories, Dublin (Ireland)

Merck, Darmstadt, Gernsheim, Vevey (Switzerland)

Merz Pharma, Dessau / Rosslau

Novartis, Stein, Basel (Switzerland)

Octapharma, Heidelberg

Oncotec, Dessau / Rosslau

Riemser Arzneimittel, Greifswald / Insel Riems

Roche Diagnostics, Mannheim, Penzberg

Roche, Rotkreuz (Switzerland)

TETEC, Reutlingen

Vetter Pharma, Ravensburg

Wala Heilmittel, Bad Boll

Wasserburger Arzneimittel, Wasserburg

Weleda, Schwaebisch Gmuend

## Pharmaceutical industry

Aeropharm, Rudolstadt

Allergopharma, Reinbek

Apotheke Waage, Berlin

B. Braun, Melsungen, Crissier (Switzerland)

CeramTec, Marktredwitz

Covance Laboratories, Muenster

DRK Blutspendedienst, Luetjensee / Hamburg

EBEWE Pharma / Sandoz, Unterach (Austria)

EVER Pharma (Germany, Austria)

Forteq, Nidau (Switzerland)

Genetic City, Kiev (Ukraine)

Holopack, Sulzbach / Laufen

IDT Biologika, Dessau / Rosslau

IMM Institut für Mikrotechnik, Mainz



B.Braun, Melsungen

# References



European Central Bank , Frankfurt / Main

© ISOCHROM

## Public buildings, office buildings, shopping centres

GO IN, Landsberg am Lech

Hamburg-america-center

Hirschmann Car Communication, Neckartenzlingen

Hugo Boss, Metzingen

HUK, Coburg

Hypo Vereinsbank, Munich

IHK, München

Kassenärztliche Vereinigung Bayern, Munich

Kö Galerie, Duesseldorf

Kreissparkasse, Crailsheim

Landeskriminalamt, Wiesbaden

Leibniz Universität, Hannover

Ludwig-Maximilians-Universität, Munich

Luitpoldblock, Munich

Main-Taunus-Zentrum, Sulzbach / Taunus

Max-Weishaupt-Realschule, Schwendi

Mercedes-Benz Museum, Stuttgart

## Public buildings, office buildings, shopping centres

ALDI SÜD, Mülheim an der Ruhr

Bauhaus, Germany

Bayerisches Landeskriminalamt, Munich

Bundeskriminalamt, Meckenheim

Central Park, Sossenheim

City Tower, Offenbach

Coface, Mainz

Coselpalais, Dresden

Deutsche Bahn, Berlin

Dorint Hotel, Hamburg / Eppendorf

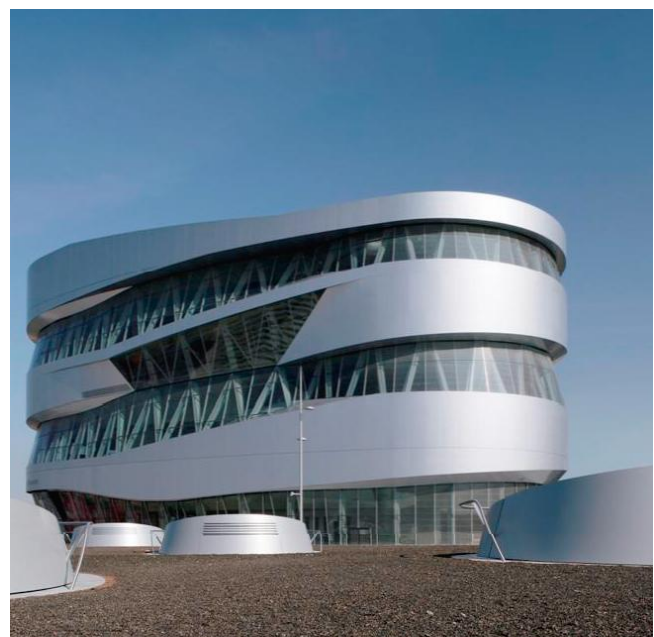
Einkaufszentrum, Neu-Isenburg

Erlenbacher Backwaren, Gross-Gerau

Fachhochschule für Finanzen, Nordkirchen

Fünf Höfe, Munich

Garden Towers, Frankfurt am Main



Mercedes-Benz Museum, Stuttgart

Source: Daimler AG



HUK, Coburg

© HUK-COBURG Versicherungsgruppe

## Public buildings, office buildings, shopping centres

Messturm, Frankfurt am Main

Münchener Rückversicherungs-Gesellschaft, Munich

Neue Messe, Stuttgart

Norddeutscher Rundfunk, Hamburg / Lokstedt

Porsche Arena, Stuttgart

Seminaris Hotel, Bad Boll

Sparkasse, Ulm

Swiss Re Europe, Unterfoehring

Tengelmann, Mülheim an der Ruhr

Verlagsgruppe Rhein-Main, Mainz

VR-Bank, Schwaebisch Hall

Waldschlösschen, Dresden

Zeppelin Luftschiffbau, Friedrichshafen

Zollkriminalamt, Cologne

Neuberger  
Gebäudeautomation GmbH  
Oberer Kaiserweg 6  
91541 Rothenburg o.d.T.  
Phone: +49 9861 402-0  
Fax: +49 9861 402-333  
E-Mail: [info@neuberger.net](mailto:info@neuberger.net)  
Internet: [www.neuberger.net](http://www.neuberger.net)

## One-stop Solution

The Neuberger company, founded in 1968, is a highly qualified supplier of products and solutions in the building automation and pharmaceutical industry.

Since 1995 Neuberger is part of the Weishaupt Group and delivers everything from one source, installation, commissioning and service support 24 hours / 7 days.

Neuberger Gebäudeautomation provides highest efficiency to enable connection of all technical systems.



Neuberger competence centres in the Weishaupt subsidiaries.



Headquarters Rothenburg ob der Tauber