

## Steel Service Center





# Steel Service Center

Virtus was established in 1997 in Turkey, a growing potential market, also in the steel sector.

The Service Center transforms, distributes and commercializes steel materials, having the steel for packaging as core segment for the past 22 years:

- Electrolytic Tinplate (ETP)
- Electrolytic Chromium Coated Steel (ECCS or TFS)

Together with the product, and in accordance with the steel market evolution, Virtus activity has always been defined and developed with the highest standards for **quality** and **service**. The company main policy is to meet customer's changing demands and developments **just-in-time**.



- 14.000 sqm covered area
- Close to ports & railway facilities
- 5 Lines for a yearly capacity of cutting of around 190 kt
  - 3 Cut to Length Lines
  - 2 Coil Slitting Lines
- Stock availability for main specifications (around 20 kt)

The company offers possibilities of printing & lacquering (sheets)

## Core Strengths

### ➤ Strategic location:

Located in Gemlik (Bursa), at few km from Marmara Sea, a strategic location for import, export, local supplies, and local deliveries.

### ➤ Just-in-time:

Service Center structure allows customers to implement just-in-time inventory management, eliminating storage and import cost.

### ➤ Flexibility & Know-how:

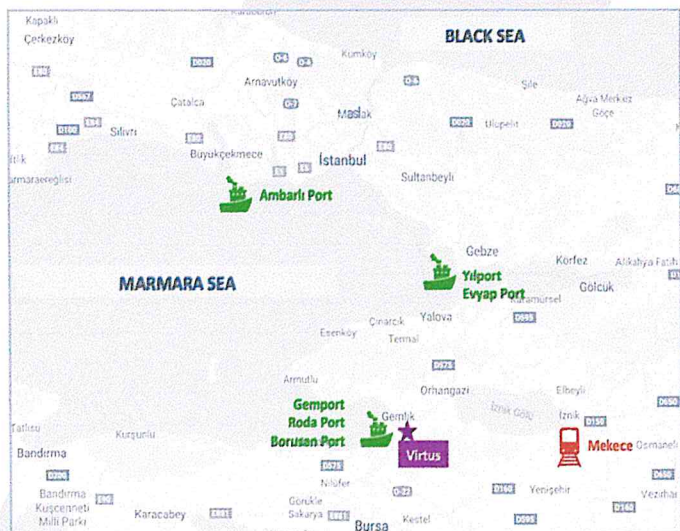
Serving around 80 customers in domestic market and around 60 customers abroad, from major manufacturers to small workshops.

### ➤ Best preferred offer of supplies:

Imported steel or Turkish steels, the best choice, technologically or logistically cost optimized.

### ➤ Global Development:

Participating with our customers with whom we work as partners in a true win-win relationship, to the development & growth in their market.





# Highest standards for quality and service

As intermediary between the steel producer and the customer, quality of Virtus products & services has been the basic factor in the long run success of the company and its family of customers.

Each segment means needs and demands, all with its particular requirements. Virtus serves solutions by supplying materials:

- From the desired quality and strict tolerances in the process.
- Just-in-time.
- Carefully conditioned.
- Following high quality control operations.
- Identifying and anticipating customer's needs and constraints.
- Accompanying customers in their development by supplying updated information on new developments in the industry.

Virtus background of already 22 years with a world leader steel group supports the company expertise in equipment, processes, know-how and technology, that will continue to offer and develop with the help of its experienced staff.

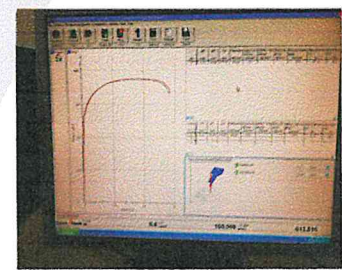
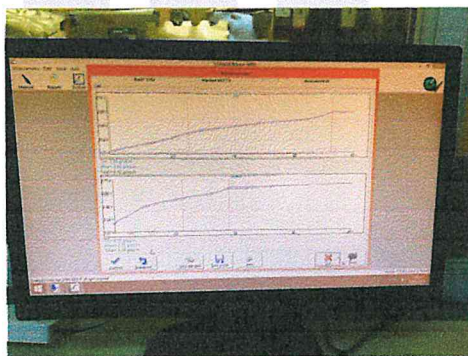
## Quality Processes

Virtus Quality Process starts when the material arrives to the plant and continue during the all cutting transformation process. In each coil the company measures:

- Dimensions of the sheet.
- Squareness.
- Flatness.
- Tin-coating.
- Mechanical characteristics.

Supported by a high performance laboratory equipment:

- Computerized Tin Coating Thickness Tester: Indel Sumetal Stannomatic Sn-6101M-D.
- Tensile Testing Machine: Zwick / Roell Z010.
- Rockwell Hardness Testing Machine: Intendec 4045 BK.



## Quality Management

QUALITY  
MANAGEMENT SYSTEM  
CERTIFICATE



ENVIRONMENTAL  
MANAGEMENT SYSTEM  
CERTIFICATE



OCCUPATIONAL  
HEALTH & SAFETY  
CERTIFICATE



INFORMATION  
SECURITY MANAGEMENT  
CERTIFICATE



AUTHORIZED  
ECONOMIC OPERATOR  
CERTIFICATE





## 3 Cut to Length Lines

For **straight & scroll** cutting, with a yearly capacity of around 165kt, fully equipped with:

- Multi-roll straightener (for good flatness performance).
- 4 stackers separating different qualities (2 for prime, 1 for non prime, 1 for rejects).
- Very precise cutting tolerance (less than 0,5mm).

	LITTELL-2 STRAIGHT / SCROLL (6 HIGH Straightner)		LITTELL-3 STRAIGHT / SCROLL (SCHNUTZ Straightner)		FIMI Cut to Length STRAIGHT (FIMI Straightner)	
	Min	Max	Min	Max	Min	Max
Thickness	0,125 mm	0,525 mm	0,125 mm	0,525 mm	0,13 mm	0,70 mm
Coil Width	600 mm	1250 mm	600 mm	1250 mm	465 mm	1250 mm
Cutting Length	460 mm	1200 mm	559 mm	1206,5 mm	450 mm	1200 mm
Coil Weight		13,6 ton		13,6 ton		16 ton
Coil Internal Diameter	380mm	420mm	380mm	420mm	380mm	420mm
Coils External Diameter	915mm	1830mm	914mm	1830mm		1930 mm
Max. Cutting Speed		137 m/min;175 sheet/min		137 m/min;175 sheet/min		120m/min
Leveller workroll diameter		38 mm		25 mm		32 mm
Leveller number of workroll		16 pieces		23 pieces		23 pieces
Cut to length tolerance		-0,+0,36 mm		-0,+0,36 mm		-0,+0,60 mm
Line straight cut capacity		62 kt		62 kt		45 kt
Line scroll cut capacity		42 kt		42 kt		
Rolling width cutting (per side)					10mm	230 mm
Power	120 kw		120 kw		240 kw	



## 2 Coil Slitting Lines

For **wide & narrow** coils, **multi-products**:

- Thinner products (i.e. Tinplate).
- Thicker products (i.e. other flat products).

Thickness  
Coil/Strip (entry) Width  
Coil/Strip (entry) Internal Diameter  
Coil/Strip (entry) External Diameter  
Coil/Strip (entry) Weight  
Coil/Strip (exit) Width  
Coil/Strip (exit) Internal Diameter  
Coil/Strip (exit) External diameter  
Slitting tolerance  
Max. Cutting Speed  
Line capacity

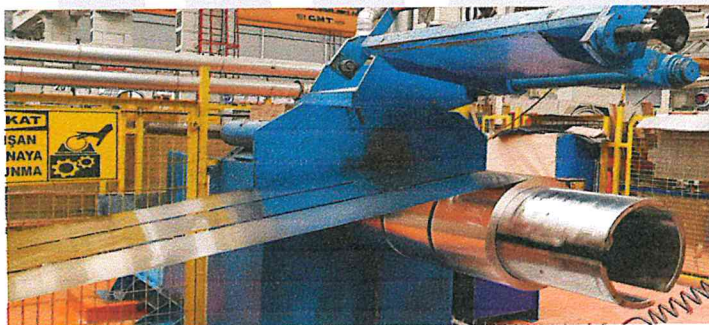
Power

STRIP COIL LINE  
(WIDE COILS)

Min	Max
0,13 mm	2 mm
30 mm	1250 mm
380mm	420mm
	1600 mm
	12 ton
20 mm	1250,00
400 mm	508 mm
	1600mm
	-0,+0,20 mm
	100m/min
	24 kt
100 kw	

STRIP COIL LINE  
(NARROW COILS)

Min	Max
0,13 mm	1 mm
20 mm	450 mm
380mm	508mm
	1400 mm
	1,5 ton
8 mm	450 mm
420 mm	420 mm
	1400mm
	-0,+0,20 mm
	100m/min
	1,5 kt
35 kw	





# Possibilities of Printing & Lacquering



## Sheet Limits:

	CRABTREE PRINTING LINE		MAILANDER LACQUERING LINE	
	Min	Max	Min	Max
Thickness	0,15 mm	0,45 mm	0,13 mm	0,45 mm
Sheet Width	700 mm	1140 mm	700 mm	1060 mm
Sheet Length	410 mm	950 mm	500 mm	1000 mm
Bundle weight		2,5 ton		2,5 ton
Max. Printing Speed		4000 sheet/h		3500 sheet/h
Number of color		2		
Curing		Conventional Oven		Conventional Oven

## Experience and know-how strength shareholder's strategy of growth

The SSC has always adapted constantly to the market needs.

For the last 22 years, being the intermediary in the supply chain that is closest to customers, the company grew together with them:

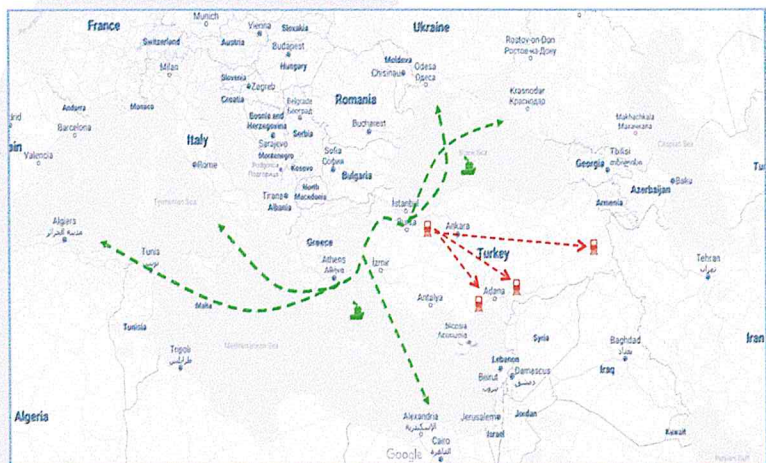
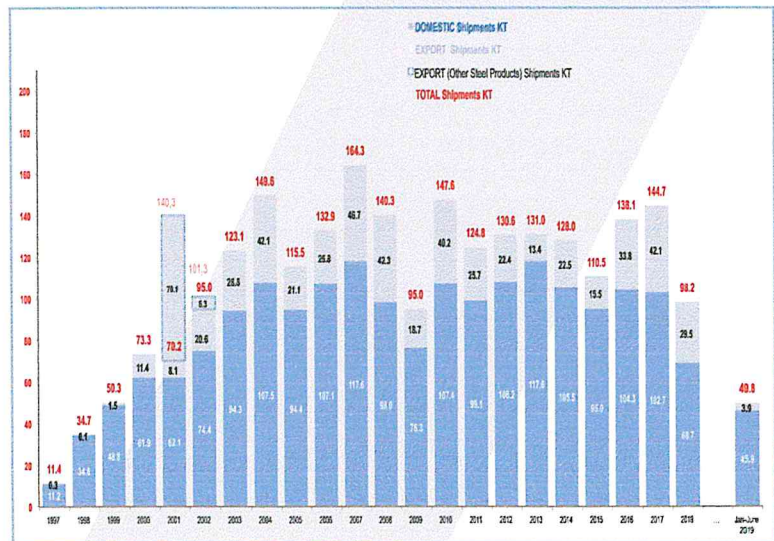
- Developing together long - time relation strategies.
- Accompanying them in their development.
- Going abroad (with export sales and/or local establishment).

With its experience Virtus once again will regain strength and capacity by putting it the heart of its strategy:

### ➤ Export neighbor markets:

- Black Sea
- Middle East
- Mediterranean & North Africa
- Eastern Europe

- Developing the equipment possibilities (including other coated steels).
- Proposing printing & lacquering possibilities (in sheets).





## Contact us:

### Head Office:

Esentepe Mah. Büyükdere Cad.  
Metrocity İş Merkezi, A Blok, No. 171  
34394 Esentepe (Şişli)  
İstanbul - Turkey

### Factory:

Umurbey Mah. Gemlik Cad. No.3  
16600 Gemlik  
Bursa - Turkey

T: +90 212 3252718 (pbx)

F: +90 212 3252723 or 24

[www.virtussteel.com](http://www.virtussteel.com)

[ana.vadillo@virtussteel.com](mailto:ana.vadillo@virtussteel.com)

"We never give up to be *Virtuous*"

