

Steel Service Center



Steel Service Center

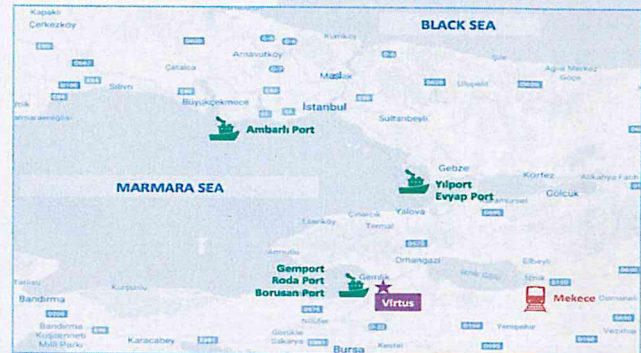
Virtus was established in 1997 in Türkiye, a growing potential market, also in the steel sector. The Service Center transforms, distributes and commercializes steel materials, having the steel for packaging as core segment for the past 26 years:

- Electrolytic Tinplate (ETP)
- Electrolytic Chromium Coated Steel (ECCS or TFS)

Together with the product, and in accordance with the steel market evolution, Virtus activity has always been defined and developed with the highest standards for **quality** and **service**. The company main policy is to meet customer's changing demands and developments **just-in-time**.



- 13.000 sqm covered area
- Close to ports & railways facilities
- Around 75 people
 - 50 in Gemlik Plant
 - 25 in Istanbul Head Office
- 6 Lines for tinplate; yearly capacity of cutting of around 190kt
 - 3 Cut to Length (for Coils)
 - 2 Sitter (for Coils)
 - 1 Coating (for lacquering Metallic Sheets)
- 2 Lines for other products (automotive - whitegoods)
 - 1 Cut to Length
 - 1 Coil Slitter
- 5.500 sqm Bonded Warehouse for import/export operations



Core Strengths

- **Strategic location:** Located in Gemlik (Bursa), at few km from Marmara Sea, a strategic location for import, export, local supplies, and local deliveries.
- **Just-in-time:** Service Center structure allows customers to implement just-in-time inventory management, eliminating storage and import cost.
- **Flexibility & Know-how:** Serving customers in domestic market and customer abroad, from major manufacturers to small workshops.
- **Best preferred offer of supplies:** Imported steel or Turkish steels, the best choice, technologically or logistically.
- **Global Development:** Participating with our customers with whom we work as partners in a true win-win relationship, to the development & growth in their market.

Highest standards for quality and service

As intermediary between the steel producer and the customer, quality of Virtus products & services has been the basic factor in the long run success of the company and its family of customers.

Each segment means needs and demands, all with its particular requirements. Virtus serves solutions by supplying materials:

- From the desired quality and strict tolerances in the process.
- Just-in-time.
- Carefully conditioned.
- Following high quality control operations.
- Identifying and anticipating customer's needs and constraints.
- Accompanying customers in their development by supplying updated information on new developments in the industry.

Virtus background of already 26 years with a group steel world leader supports the company expertise in equipment, processes, know-how and technology, that will continue to offer and develop with the help of its experienced staff.

Quality Processes

Virtus Quality Process starts when the material arrives to the plant and continue during the all cutting transformation process. In each coil the company measures:

- Dimensions of the sheet.
- Squareness.
- Flatness.
- Tin-coating.
- Mechanical characteristics.

Supported by a performant laboratory equipment

- Computerized Tin Coating Thickness Tester: Indel Sumetal Stannomatic Sn-6101M-D.
- Tensile Testing Machine: Zwick / Roell Z010.
- Rockwell Hardness Testing Machine: Intendec 4045 BK.



Experience and know-how strength shareholder's strategy of growth

The SSC has always adapted constantly to the market needs.

For the last 26 years, being the intermediary in the supply chain that is with its customers, the company grew together:

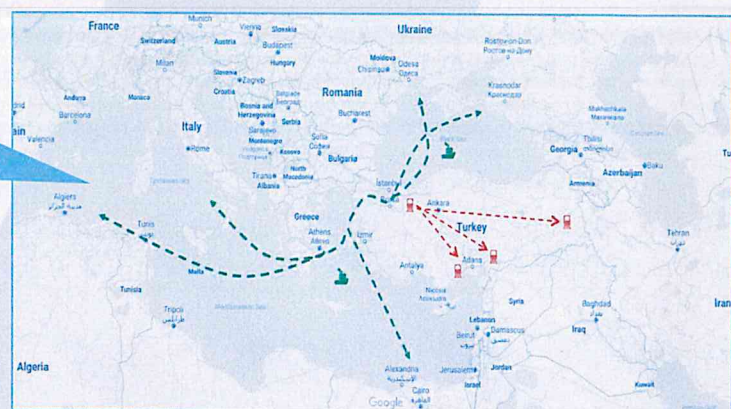
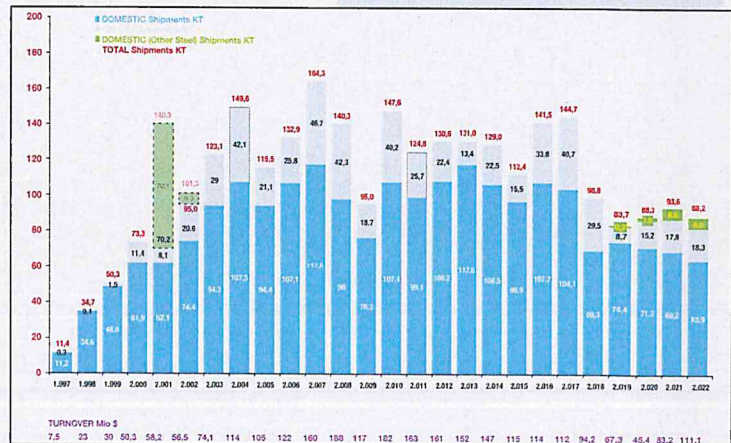
- Developing together long - time relations strategies.
- Accompanying them in their development.
- Going abroad (with export sales and/or local establishment).

With its experience Virtus once again will regain strength and capacity by putting it the heart of its strategy:

- Export neighbor markets:

- Black Sea
- Middle East
- Mediterranean & North Africa
- Eastern Europe

- Developing & improving existing equipment
- Lacquering possibilities (in sheets)



Quality Management

QUALITY
MANAGEMENT SYSTEM
CERTIFICATE



ENVIRONMENTAL
MANAGEMENT SYSTEM
CERTIFICATE



OCCUPATIONAL
HEALTH & SAFETY
QUALITY MANAGEMENT
SYSTEM CERTIFICATE



INFORMATION
SECURITY
MANAGEMENT
SYSTEM CERTIFICATE



AUTHORIZED
ECONOMIC OPERATOR
CERTIFICATE



3 Cut to Length Lines

For **straight** & **scroll** cutting, with a yearly capacity of around 165kt, fully equipped with:

- Multi-roll straightener (for good flatness performance).
- 4 stackers separating different qualities (2 for prime, 1 for non prime, 1 for rejects).
- Very precise cutting tolerance (less than 0,5mm).

	LITTELL-2 STRAIGHT / SCROLL (6 HIGH Straightner)		LITTELL-3 STRAIGHT / SCROLL (SCHNUTZ Straightner)		FIMI Cut to Length STRAIGHT (FIMI Straightner)	
	Min	Max	Min	Max	Min	Max
Thickness	0,125 mm	0,525 mm	0,125 mm	0,525 mm	0,13 mm	0,70 mm
Coil Width	600 mm	1250 mm	600 mm	1250 mm	465 mm	1250 mm
Cutting Length	460 mm	1200 mm	559 mm	1206,5 mm	450 mm	1200 mm
Coil Weight		13,6 ton		13,6 ton		16 ton
Coil Internal Diametre	380mm	420mm	380mm	420mm	380mm	420mm
Coils External Diametre	915mm	1830mm	914mm	1830mm		1930 mm
Max. Cutting Speed		137 m/min;175 sheet/min		137 m/min;175 sheet/min		120m/min
Leveller workroll diametre		38 mm		25 mm		32 mm
Leveller number of workroll		16 pieces		23 pieces		23 pieces
Cut to length tolerance		-0,+0,36 mm		-0,+0,36 mm		-0,+0,60 mm
Line straight cut capacity		62 kt		62 kt		45 kt
Line scroll cut capacity		42 kt		42 kt		
Rolling width cutting (per side)					10mm	230 mm
Power	120 kw		120 kw		240 kw	

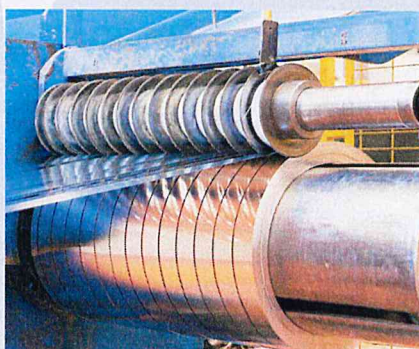


2 Slitting Lines

For **wide** & **narrow** coils,
multi-products:

- Thin products (i.e. Tinplate).
- Thicker products (i.e. other flat products).

	STRIP COIL LINE (WIDE COILS)		STRIP COIL LINE (NARROW COILS)	
	Min	Max	Min	Max
Thickness	0,13 mm	2 mm	0,13 mm	1 mm
Coil/Strip (entry) Width	30 mm	1250 mm	20 mm	450 mm
Coil/Strip (entry) Internal Diametre	380mm	420mm	380mm	508mm
Coil/Strip (entry) External Diametre		1600 mm		1400 mm
Coil/Strip (entry) Weigth		12 ton		1,5 ton
Coil/Strip (exit) Width	20 mm	1250,00	8 mm	450 mm
Coil/Strip (exit) Internal Diametre	400 mm	508 mm	420 mm	420 mm
Coil/Strip (exit) External diametre		1600mm		1400mm
Slitting tolerance		-0,+0,20 mm		-0,+0,20 mm
Max. Cutting Speed		100m/min		100m/min
Line capacity		24 kt		1,5 kt
Power	100 kw		35 kw	



1 Metal Sheet Coating Line

For coating or varnishing ETP/ECCS, Aluminium and other metal sheets

- Metal sheet coating machine
- Metal decorating oven

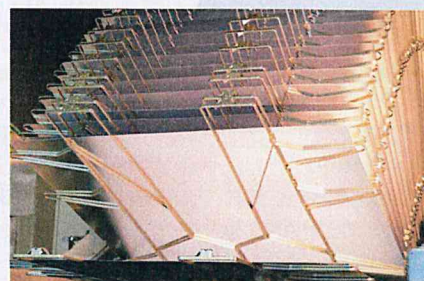
METAL SHEET COATING LINE

Coating speed	Min	Max
Metal Sheet Size	680 x 480 mm	1200 x 1000 mm
Metal Sheet Thickness	0,14 mm	0,60 mm
Rubber Roller Dia	(full coating) ø324 x ø339 mm (partial coating) ø329 mm	
Impression Roller	ø220 mm	
Bundle weight		

METAL DECORATING OVEN (Conventional)

Min	Max
712 x 508 mm	1200x 1000 mm
0,14 mm	0,5 mm

2 tons



Other Steel Products

For other segments:

- Automotive
- Whitegoods

Cut to Length Line

CTL 1 LINE RIZZATO / Shearing FIMI (Rotary) / 4 high leveller		
Thickness (mm)	min	max
Coil Width Length (mm)	0,5	2,5
Cutting Length (mm)	365	1500
Coil Weight	410	5000
Coil Internal Diameter (mm)	16 ton (22ton in construction)	
Coils External Diameter (mm)	508	
Max. Cutting Speed	1700	
Leveller workroll diameter (mm)	60 m/min	
Leveller number of workroll	45	
Cut to length tolerance (mm)	19	
Power	-0/+0,8	
	270 kw	

Bonded Warehouse (Type A)

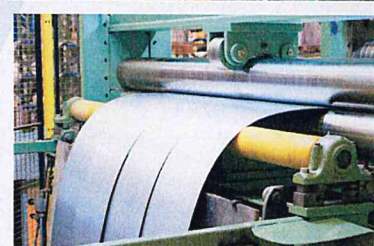
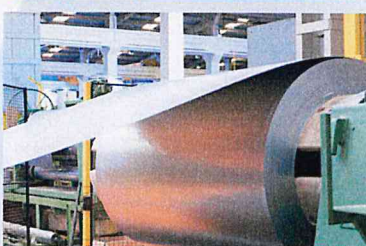
5000 sqm of Bonded Warehouse (Type A)

- For storage of importing and exporting goods,
- Easy handling facility (3 over-head cranes),
- Suitable for heavy goods.



Slitting Line

SLITTING LINE		
B & V / NN	mim	max
Thickness (mm)	0,5	3,5
Coil/Strip (entry) Width (mm)	300	1700
Coil/Strip (entry) Internal Diameter (mm)		508
Coil/Strip (entry) External Diameter (mm)		1800
Coil/Strip (entry) Weight	20	25 ton
Coil/Strip (ent) Width (mm)		1690
Coil/Strip (ent) Internal Diameter (mm)		508 or 620
Coil/Strip (ent) External diameter (mm)		1700
Max. Cutting Speed		100 m/min
Slitting tolerance (mm)		-0/+0,20
Trimming per side (mm)		3/3
Burr breaker		
Suitable for sensitive surface		
CTL Shearing unit		
Power		220 kw



Contact us:

Head Office:

Esentepe Mah. Büyükdere Cad.
Metrocity İş Merkezi, A Blok, No. 171
34394 Esentepe (Şişli)
İstanbul - Türkiye

Factory:

Umurbey Mah. Gemlik Cad. No.3
16600 Gemlik
Bursa - Türkiye

T: +90 212 3252718 (pbx)

F: +90 212 3252723 or 24

ana.vadillo@virtussteel.com

info@virtussteel.com

www.virtussteel.com

