

SpecMetrix® In-Line Coating Thickness and Film Weight Measurement Systems

- ✓ Substrate independent ✓ Real-time process data ✓ Nanometric precision ✓ Cost and time savings

Features

- **Non-Contact and Non-Destructive** – Continuous measurements are taken with no harm to coatings or substrate, preserving product integrity
- **Absolute Thickness Measurement** – Provides precise measurement of coating thickness and film weight on flat sheets and film laminates on metal substrates
- **Substrate Independent** – Measures wet or dry coatings on aluminum, stainless steel, tinplate and other metal substrates; and over any print or substrate color, including black
- **Non-Hazardous** – Incorporates exclusive non-radioactive and non-invasive ROI optical measurement technologies that are easy to use and maintain
- **Real-Time Measurements** – Wet coating measurements expedite first piece inspection and increase throughput by accelerating first film weight results
- **Broad Range of Use** – Real-time measurement of applied sheet coatings including all lacquers, double coats, pigmented and barrier coatings
- **Environmentally Friendly** – Non-destructive testing method that reduces scrap, solvent usage, labor hours and energy costs
- **Powerful SpecMetrix® Software** – User-friendly software package stores all data to Excel® or interfaces to plant networks for SPC analysis during or after production runs



SpecMetrix in-line systems provide manufacturing and QA teams with feedback on coating quality immediately following application, improving coating process control and product quality.

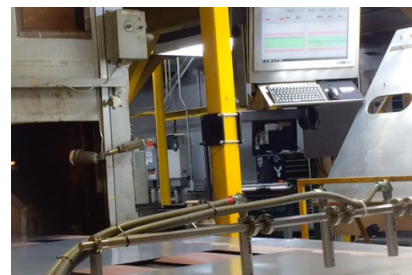
Continuous and More Accurate In-Line Film Weight Measurement Solutions for Metal Packaging Applications

Award-winning SpecMetrix In-Line Coating Measurement Systems deliver a higher standard of precision for non-contact, non-destructive real-time coating thickness and film weight measurement of coated flat sheets, wet or dry.

The modular design and high-speed operation of these in-line systems streamline plant set-up, changeover and inspection times, while reducing coating costs in diverse metal packaging plant processes.



Rugged mounts and probe packages for fixed configurations with up to six probes



Generates accurate film weight data from the initial coated sheet on new runs

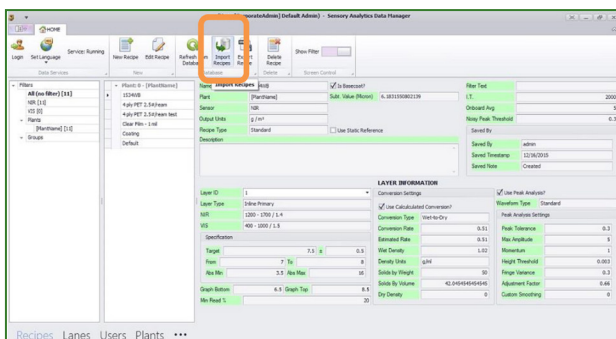
Reliable and Repeatable Systems for In-Process Film Weight Data for Flat Sheets



In-process measurements are calculated in microns with film weight conversion options to units such as g/m² or mg/in², as required



Real-time data via the user-friendly software makes immediate film weight adjustments possible



Create, edit and view coating recipes easily via the Recipe Wizard

Optional System Configurations

- Offline Lab and Enhanced Lab Systems for sample testing
- Split Systems for side by side coating lines
- ATEX probes and system designs available

Technical Specifications

Measurement Range: 0.3 to 250 microns (coating thickness)

Accuracy: +/- 3% of coating thickness (nominal)

Web Speed: Up to 2000 feet/minute
Up to 600 meters/minute

Temperature Range: 0° to 55° C



Measurement Speed: Up to 150 per second

Web Width: Customizable

Output Metrics: microns
mils
mg/in²
mg/4in²
g/m²
mg/cm²
lbs/ream

Operating System: Windows® platform

Manufactured: Made in USA

Certifications: CE approved
 approved
 approved

Note: This device and the methods to use same are covered by U.S. Patent Numbers 6,674,533; 7,128,985; 7,274,463; 7,365,865 and 7,537,681 with additional U.S. and foreign patents pending. All trademarks are acknowledged as the properties of their owners. SpecMetrix® is a trademark of Sensory Analytics. All rights reserved. Windows® and Excel® are trademarks of the Microsoft Corporation.