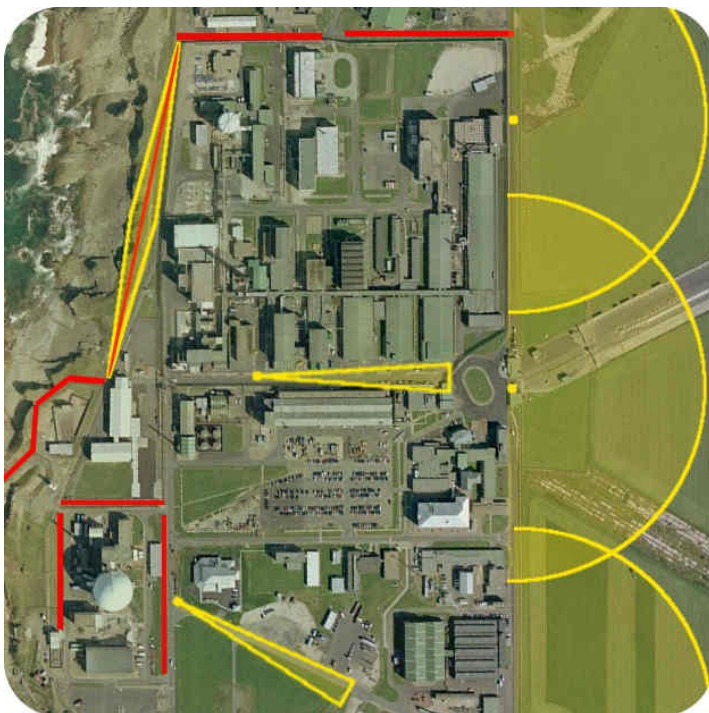


Scan 360™ Security

24/7 all weather threat detection

IP based radar and microwave sensors with easy to use graphical interface for intuitive set-up, control and operation.



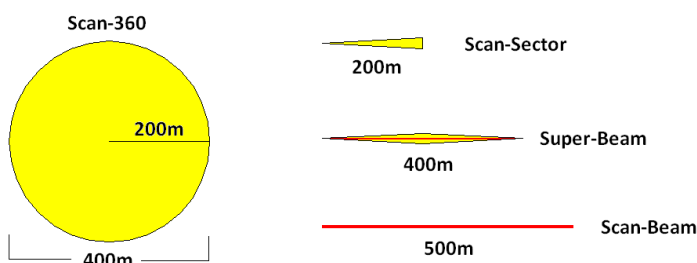
The Scan-360™ range of high performance microwave sensors provide full area or perimeter coverage as required at a fraction of the price of their military counterparts.

All sensors have low power consumption and use Power-over-Ethernet (PoE) to provide connectivity and power via a single cable. The radar sensors can operate a compatible PTZ camera slewing it onto the target. The flagship, Scan-360, is able to control up to four cameras simultaneously and follow each target.

With a Graphical User Interface (GUI) built in, commissioning and operation is easy. For sites using multiple Scan-360™ sensors our Scan-Watch software is available to oversee them on the same platform.

Microwave sensors work 24 hours a day in all weathers seeing through rain, fog, mist and snow, in blindingly bright light or total darkness.

For optimum performance an un-obstructed line-of-sight between the sensor(s) and target is required



Scan-360



Applications	Features	Requirements
Wide area detection	PoE, IP, GUI, GPS	Typical install height 2m to 6m
	Controls 4 PTZ cameras	Single Ethernet connection with PoE
	200m / 360° coverage	Line of sight
	Supports multiple zones	Flat open ground
	VMS interface	
	Supports Google maps	

Scan-360 is a rotating radar with 200m radial range, scanning and reporting targets across 360 degrees every second. It is ideal for wide area coverage of open terrain. Using the graphical interface and in built GPS, commissioning and operation are straightforward. Multiple zones and detection thresholds are set easily. Up to four compatible PTZ cameras can be automatically slewed to different targets. The radar is compatible with a number of VMS solutions and API codes are freely available for further integration.

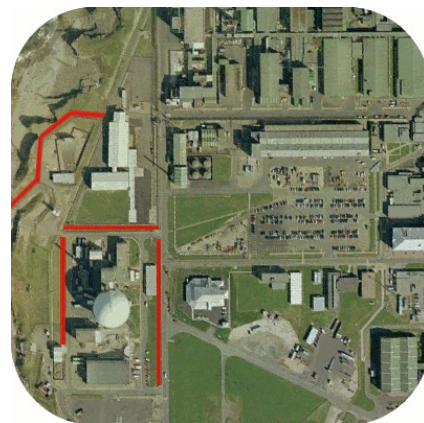
Scan-Sector



Applications	Features	Requirements
Perimeter detection	PoE, IP, GUI	Typical install height 2m to 6m
Corridor	Controls PTZ camera	Single Ethernet connection with PoE
Approach roads	200m / 6° coverage	Line of sight
	Supports multiple zones	Flat terrain, minimal vegetation
	VMS interface	
	Supports Google maps	

Scan-Sector is a fixed-plate radar with a narrow beam of approximately 6 degrees and maximum range of 200m. It has the same features as Scan-360, except it does not rotate so is ideal for applications where a faster scan rate is more important than 360 degree coverage, for example along a perimeter or between buildings. Unlike dual-sensor beam-break systems, Scan-Sector uses a single sensor and can be mounted high to prevent vandalism.

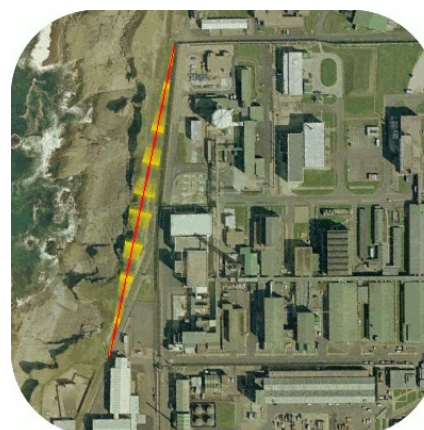
Scan-Beam



Applications	Features	Requirements
Perimeter detection	PoE, IP	Typical install height 1m
	'Pencil' beam coverage	Ethernet connection with PoE to both sensors
	500m range	Line of sight
	Very low false alarm rate	Flat terrain, minimal vegetation
	High detection probability	

Scan-Beam provides 'microwave fence' functionality with a 500m range. The space between the two sensors forms a virtual fence and an alarm is triggered when it is crossed. Unlike the other radar products, Scan-Beam cannot control a camera or measure the target co-ordinates. The beam profile provides a very narrow detection zone with very high detection probability and very low false alarms. It is ideal for use along a fence line where traffic running parallel is permitted and precise target location is not important. Multiple units may be stacked for extremely high security applications.

Super-Beam



Applications	Features	Requirements
Perimeter detection	PoE, IP, GUI, GPS	Typical install height 1m
	Controls 4 PTZ Cameras	Ethernet connection with PoE to both sensors
	400m / 6° range	Line of sight
	Supports multiple zones	Flat terrain, minimal vegetation
	VMS interface	
	Supports Google maps	

Super-Beam combines the ultra-low false-alarm rate and high detection probability of a beam-break system with the positional information offered by Scan-Sector in a single system. The two sensors can be spaced up to 400m apart to form a high performance microwave fence that can take control of multiple cameras slewing them onto targets. Just like the Scan-360 radar it has GPS for positioning and synchronisation. It is ideal for perimeter protection and for use along a fence line where parallel traffic is permitted.