



IDEAL LINE

— just lock it —

Invest in your safety





## ABOUT THE COMPANY

The IDEAL LINE Sp. z o.o. company was founded in 2011, but **the experience of our employees** in the production of such devices as safes, vaults and steel doors dates back to the nineties, because it was gained by them in the now defunct SHIBAS Sp. z o.o. company, which was one of the first in Poland to equip newly established bank branches with devices for storing valuables.

We are currently **a manufacturer of devices for mechanical protection of monetary values, securities, jewellery, documents** and other valuables. Our offer includes certified safes, deposit safes, vault doors and vault panels in various security classes.

Our offer also includes steel profile doors with anti-burglary, fire-resistant or bullet-proof properties manufactured by our company in accordance with applicable standards.

Due to our human resources and modern machinery, **we can implement projects related to broadly understood safety on a turnkey basis**, from design, production, delivery, assembly and subsequent servicing.



**As a company, we hold a licence from the Ministry of the Interior and Administration for the protection of services and property carried out in the form of technical security, number L-0111/18, and our employees have the appropriate authorisation to access classified information.**



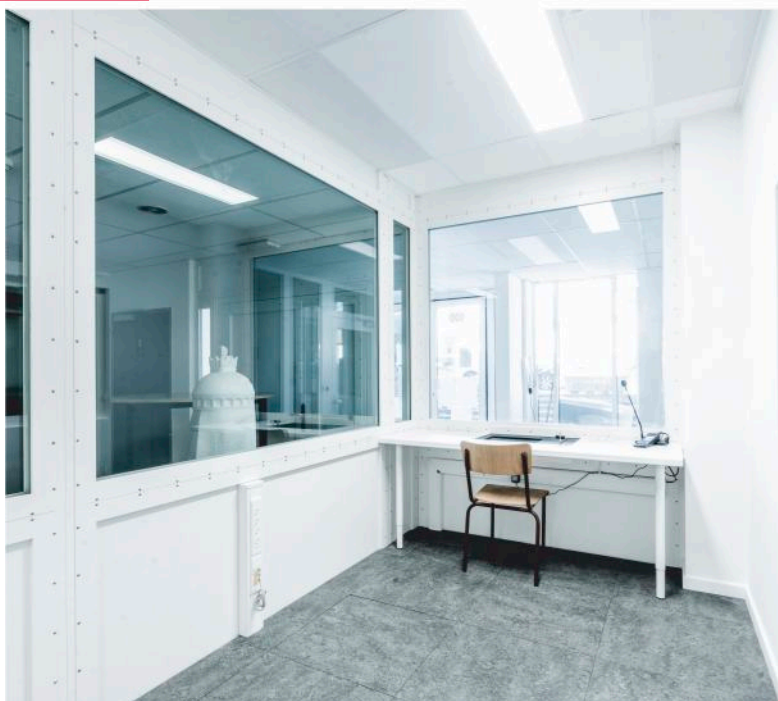
## BULLETPROOF SECURITY

Our company's offer includes certified bulletproof products based on the PN-EN 1522:2000 standard corresponding to the FB5 class.

We can equip any facility with bulletproof doors, walls, or a serving window, ensuring safe contact with the client.

Creating a safe room that provides protection requires an individual approach and a design that considers the client's specific expectations each time.

Safe rooms are a dedicated solution for police stations, the army and institutions with an increased risk of using firearms against them.







We can offer our customers  
the following products:

- anti-burglary
- fireproof
- technical
- for prison cells
- for weapons warehouses

In accordance with PN-EN 15301-2:  
2016, PN-EN 1627:22012 and relevant  
Regulations of the Minister of National  
Defence or the Director General of the  
Prison Service.

## → STEEL JOINERY

Steel is an element that creates steel window and door systems, which are used in industrial facilities, public utility buildings, shopping malls, jewellery stores, and currency exchange offices. Steel is a material that will prove useful in producing specialist products such as fire-resistant, anti-burglary, bulletproof and sound-proof structures. **Steel joinery is valued for its durability and low susceptibility to deformation and mechanical damage.** In the case of steel joinery, the profiles can be filled with single or composite glass and polycarbonate or steel panels. Our products can be painted in any colour from the RAL palette, and the structure can be adjusted to meet the customer's expectations.

The solutions offered by our company can be equipped with access control or anti-panic locking used in emergency doors.



## → CABINETS AND BLOCKS OF CABINETS FOR STORING WEAPONS

The cabinets and blocks of lockers for storing weapons offered by our company are always tailored to the user's expectations and are practically an individual project. We specialise in the production of custom-made cabinets with lockers individually tailored to your needs, i.e. containing the appropriate number of lockers of a given size.

The weapon storage device can be equipped with a key, combination or electronic lock. In depositories or blocks of lockers, an electronic lock with the possibility of audit is most often used.

Thanks to weapon depositories made taking into account the special needs of a given weapon or room, the functionality of the lockers can be increased while meeting all legal requirements and safety standards.

Our products meet the requirements of the PN-EN 14450:2018 standard.



## → SECURITY OF CLASSIFIED INFORMATION

A series of products that meet the requirements of the PN EN 14450 standard supplemented with additional security aspects that can be used to create a registry for storing classified information. The protection of classified documents requires an appropriate type of premises secured with doors intended for secret registry offices and specially secured document cabinets.

The above products aim to secure proprietary, confidential, secret and top-secret documents in secret registry offices. A wide range of products offered allows for the optimal selection of a solution created to meet the needs.

### Products offered by us:

- doors for secret offices
- office panels
- cabinets for storing classified information meet

The requirements contained in the Regulation of the Minister of National Defence (cabinets in class A, B and C).

We will take care  
of securing your information

---



## → SAFES

IDEAL LINE Sp. z o.o. is an experienced manufacturer of safes compliant with European requirements. With their help, companies, state institutions and individuals properly secure important documents, securities, expensive items, significant amounts of cash, and everything with material and sentimental value. The safes we produce to order are certified devices made of high-quality materials that ensure an appropriate level of security for the contents stored in them. We offer our customers custom-made products in terms of product class, dimensions, and equipment so that everyone can choose the product that best fits their current requirements and expectations.

**Our safes are made in the I, II and III security classes according to PN-EN 1143 and are used:**

- in private properties – houses, apartments,
- in business offices,
- in offices at various levels of administration,
- in public institutions,
- in jewellery stores,
- in financial institutions.







**The doors can be optionally equipped with:**

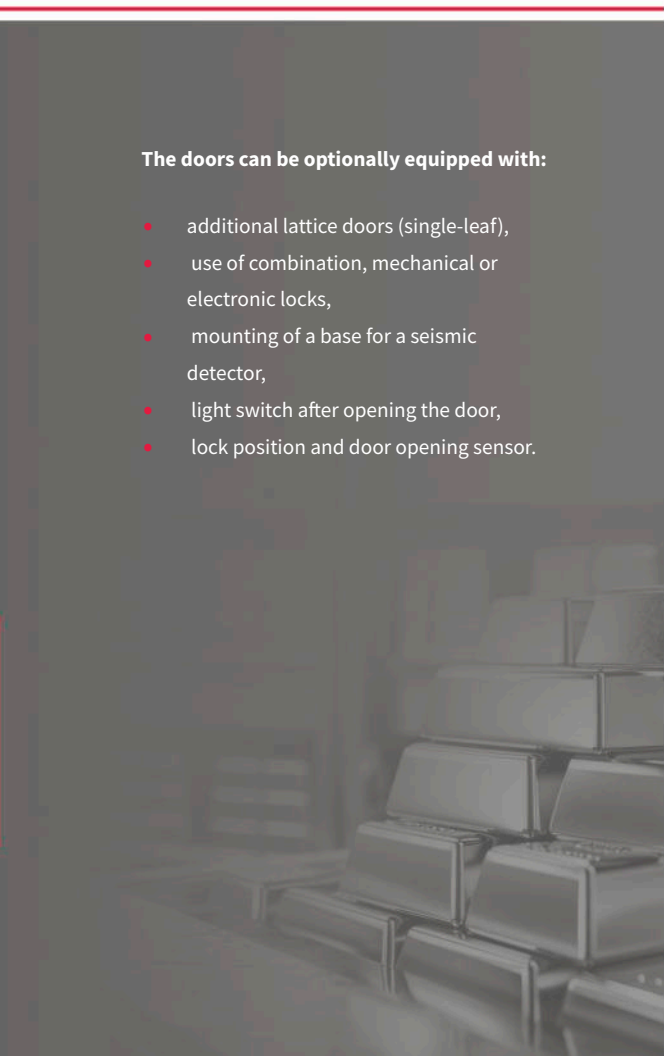
- additional lattice doors (single-leaf),
- use of combination, mechanical or electronic locks,
- mounting of a base for a seismic detector,
- light switch after opening the door,
- lock position and door opening sensor.

## → **VAULT DOORS AND VAULT ROOMS**

The vault doors we manufacture meet all technical requirements used in vaults, and are also characterised by an attractive, simple design that distinguishes the elements of the structure, which is also influenced by various classes of locks and handles. Vault doors provide special protection for the entrance to a room or building intended for collecting and storing valuable documents and valuables, which is why a solid structure with high resistance to burglary plays a considerable role.

We can also offer the construction of a modular vault room built of certified vault panels corresponding to the class of the offered vault doors.

Our offer includes certified products to order according to PN-EN 1143-1:2012 in classes I-III.



## → DEPOSIT DEVICES

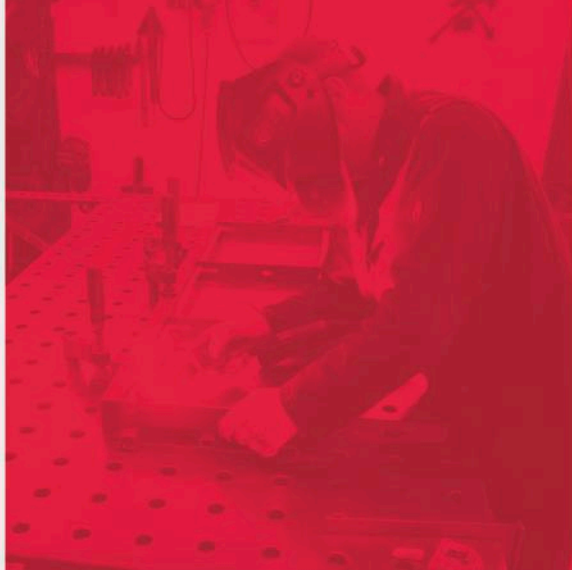
IDEAL LINE Sp. z o.o., based on its own potential and that of cooperating companies, also offers devices for issuing and depositing various types of securities.

### **Our devices work as:**

- automatic and autonomous hotel receptions,
- devices for issuing and receiving keys, e.g., in car services or rental houses,
- devices used in cash circulation.







**IDEAL LINE**

IDEAL LINE Sp. z o.o.  
Aleja Piłsudskiego 70  
18-400 Łomża  
NIP 844 23 44 611  
biuro@idealline.pl  
www.idealline.pl