

# CCTV solutions





### ***Our history***

Global Proof has been founded near Vicenza, Italy, in 1998 as a specialist in the design and manufacture of camera housings and CCTV systems. Over the years our business has also extended to solutions for environments with explosion risk classification (ATEX), thermal cameras and also maritime. Our business isn't based on the domestic market only but is extending worldwide thanks to important collaboration relationships with European and extra-European companies. Strong commitment and green philosophy are the main traits of GLOBAL PROOF R&D dept, which always take into account environment, energy saving, and new technologies used in the CCTV sector.

- Our 360° customer consultation service is prized by our clients.
- Our growth is fuelled through creativity, research, invention and innovation.



### ***Our goals are:***

- Expanding in video surveillance markets in general and also for critical areas, offshore & onshore and applications with thermal cameras.
- Consolidating our presence in key foreign markets and development of new partnerships worldwide.
- Keep working on our consulting skills and tailor-made service, to become a leading company.

### ***The advantages of choosing Global Proof:***

A team of experts in our target market segments, excellent sector references, capable to assist in selection, definition, design, supply of the most advanced systems on the market today.

### ***Mission:***

Global Proof's mission is to build and consolidate long-lasting relationships with our customers by supplying made-to-measure products, growing our business through innovation and technology.

### ***Vision:***

Our vision of the future is providing quality services that meets and even surpasses our customers' expectations, anticipating their needs and searching for tailor-made systems, reacting to the needs of a fast growing and evolving market.



## PTZ UNITS



GLOBAL PROOF develops and manufactures world class stainless steel P&T systems with one or two units, perfect for heavy-duty tasks and designed to operate in the harshest and most corrosive environments, such as industrial and offshore/onshore marine applications.

The P&T systems can be supplied with or without an integrated camera. These units require minimum maintenance and are completely resistant to rust and corrosion, thanks to the high precision manufacturing processes and the quality of the electropolished AISI 316L stainless steel. The P&T units are always supplied with an integrated wiper; there is also available a wide choice of tanks (of various capacities) complete with washer pump and spray nozzles.

The P&T units are ideal for any harsh environment such as Marine and Offshore applications.



## HAZARDOUS AREA HOUSINGS

GLOBAL PROOF designs and manufactures explosion proof camera housings, to provide an ideal and safe solutions for hazardous classification areas.

All our ATEX certified camera housings are made of excellent corrosion-resistant materials, making them the preferred solution for marine, industrial and chemical environment installations, where there is a potentially explosive atmosphere.

*On request a thermal or visible camera can be pre-installed in the housing giving a cost effective "plug and play" solution.*

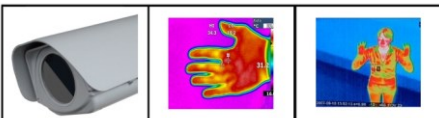


## HOUSINGS FOR THERMAL CAMERAS

GLOBAL PROOF designs and manufactures special housings for Thermal cameras, using the highest quality materials and dedicated in-house production processes. The high-performance Germanium glass with anti-scratch surface treatment guarantees perfect thermal vision.

A wide range of accessories is available (blowers, heaters, power supplies, anti-tamper switches, etc.) to satisfy any installation requirement.

*On request a thermal camera can be pre-installed in the housing giving a cost effective "plug and play" solution.*







## HOUSINGS FOR “ Tunnel “ APPLICATIONS

Controlling traffic inside tunnels is a complex task, due to the intrinsic tunnel characteristics; Global Proof has developed a specific camera housing range, the **CSX...T** and **DUAL Vision series**, in order to give a bespoke solution to the difficulties of such a demanding environment.



## GENERAL PURPOSE CAMERA HOUSINGS

Our core business, GLOBAL PROOF develops and manufactures camera housings, with constant attention to cutting-edge technologies and continuous improvements in our production processes.

A wide range of accessories is available (blowers, heaters, power supplies, integrated IR illuminator, anti-tamper switch, etc.) to tailor the solution to the specific needs of the site. Particular attention is paid to IP products, with a wide range of **PoE** and **HI-PoE** solutions (*Italian Patent*), that are particularly recommended for the installation of IP Megapixel cameras.

infrared

IR Integrated series available



PoE and HI-PoE series available



## INFRARED ILLUMINATORS

The GLOBAL PROOF IR illuminators **NYX ELI NUO** series ensure effective lighting of the scene even in low light conditions or in total darkness. The optimization of energy consumption and the long life of the illuminators are ensured by our cutting-edge design, the latest generation LEDs and integrated adjustable dusk sensor.

A wide range of models and distances guarantees to match any installation requirement.

The Global Proof range of illuminators are available with several power options: **PoE**, low voltage or with integrated 230V PSU.



PoE and HI-PoE series available



HEAD QUARTER:

GLOBAL PROOF S.r.l.

Via dell'Industria, 10

36013 Piovene Rocchette (VI) - ITALY -

Ph. +39 0445 396190 - fax +39 0445 395000

www.globalproof.it



www.globalproof.it