

## TECHNOLOGY PERFORMANCE COMPARISON FOR SECURITY

PARAMETERS	LiDAR	Radar	Camera
Direct 3D Data Measurement	●	●	●
Resolution	●	●	●
Object Detection	●	●	●
Object Size	●	●	●
Object Classification	●	●	●
Object Velocity	●	●	●
Weather Agnostic	●	●	●
Light Agnostic	●	●	●
Anonymous Data Collection	●	●	●
False Alarms	●	●	●

## GET IN TOUCH WITH OUR EXPERTS FOR LiDAR-BASED SECURITY APPLICATIONS



**Andreas Bollu**  
Team Lead Security  
Applications



**Raphael Peyman**  
Sales & Business  
Development Manager

sales@blickfeld.com  
+49 89 230 69 35 83  
www.blickfeld.com

**Blickfeld GmbH**  
Barthstraße 12  
80339 Munich / Germany

**Blickfeld**  
LiDAR / scan your world

# Blickfeld LiDAR Security Solutions

- Reliable Threat Detection
- Low False Alarm Rates
- Anonymous Data Collection
- Daylight Agnostic Solution



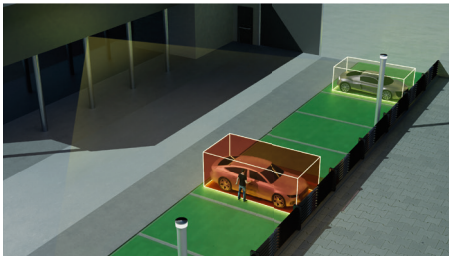
**Blickfeld**  
LiDAR / scan your world

## LiDAR-based Security Solutions

LiDAR sensors capture high-resolution 3D data to precisely detect objects' size, direction, and velocity in their field of view. LiDARs also work better than current security devices in all lighting and atmospheric conditions and are very hard to compromise or hack. The complementary software analyzes the high-resolution point clouds in real-time to enable easy definition and monitoring of boundaries and zones as well as accurate object detection. All these qualities make them a perfect fit for various security applications.

### ZONE MONITORING

LiDARs can monitor zones and objects for a particular area, such as parking lots, mining or drilling sites, solar parks, or industrial plants. This helps in the detection and recognition of objects of all shapes and sizes.



#### Some highlight features include:

- Pre-crime detection by tracking suspicious activity
- Automatic classification of objects
- Precise zone placement for lower false alarm rates

### FACADE SURVEILLANCE

LiDAR can be used to monitor a wall or facade of any building. This would include triggering an alarm if a person or object gets too close to the facade and also provide vertical protection of the building to guard against any object such as a drone or person climbing or moving up the wall. LiDARs can be easily mounted on buildings such as prisons, banks, and museums.



#### Salient features include:

- Simple mounting thanks to multi-line scanning
- Coverage of up to 65m tall walls
- Detection of open windows and doors

### FENCE MONITORING

LiDAR can secure a fence around any building or facility. This could range from a fence around government buildings, military facilities, ports, or airports.



#### Salient features of the Blickfeld LiDAR include:

- Reliable coverage of up to 90 m of a fence in length
- Adjustable zones to exclude vegetation or other distractions
- Virtual fences to secure a perimeter without actual fences

### OBJECT TRACKING

Security applications benefit from being able to count people and objects entering and exiting a particular building or a gate. This data can be used in applications such as people flow tracking and business intelligence collection for retail solutions, and crowd management for large-scale events.



#### Features include:

- Business intelligence data, e.g. generation of heatmaps for crowd flows or conversion rate tracking, crowd control, people counting
- Easy integration with fence and/or zone detection

## ADVANTAGES OF BLICKFELD'S LiDAR-BASED SECURITY SOLUTION

- End-to-End Security Solution
- Reliable Threat Detection
- Low False Alarm Rates
- Anonymous Data Collection
- Daylight and Background Agnostic
- Adjustable Resolution, Framerate, and FoV
- Minimal Maintenance