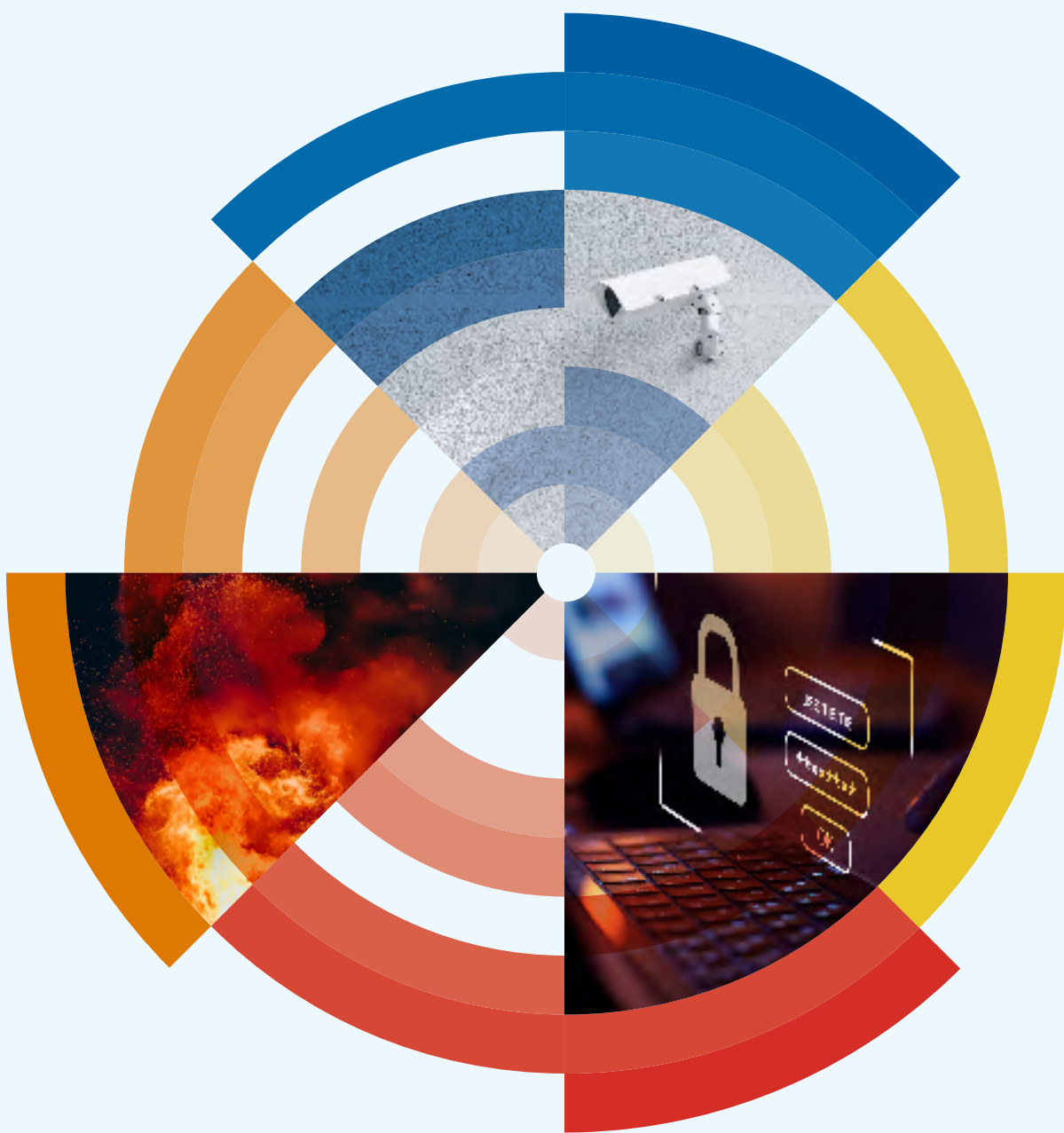



PREVENTION IN MOTION



Fire and intrusion prevention



“We protect the precious things in life. ANPI brings together advanced research and hands-on experience in an impartial way to become your essential partner. Together, we can prevent fire and intrusions.”

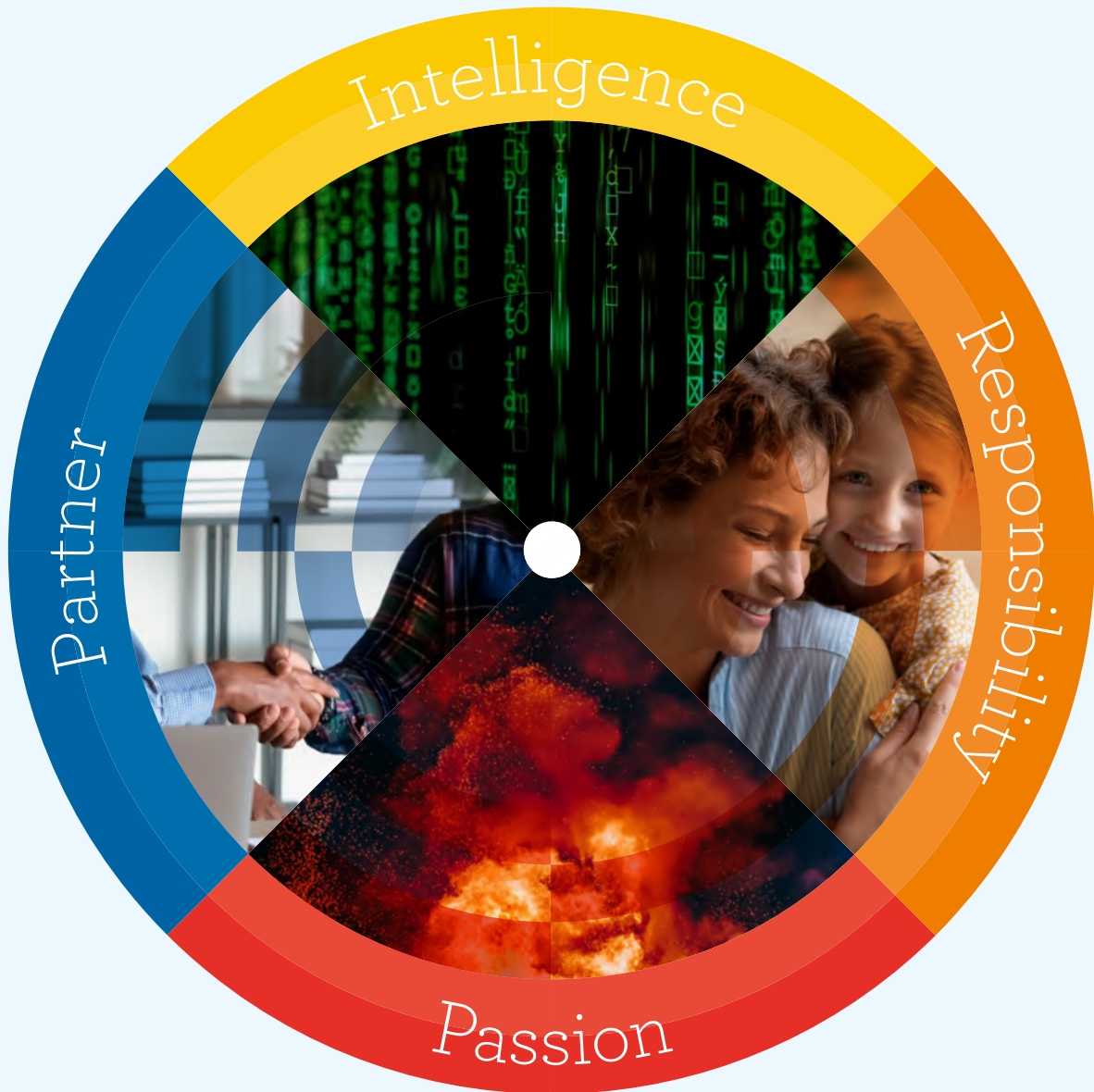
CONTENTS

OUR VALUES	4
VISION AND MISSION	5
INTRODUCTION	6
TESTING	7
CERTIFICATION	11
INSPECTION	14
STANDARDISATION	18
INFORMATION	20
CONTACT	23



*“Our expertise
and experience
save lives.”*

OUR VALUES



“ANPI: the best at preventing the worst.”

OUR MISSION

We are ANPI, the only Belgian association and one of the four European fire and intrusion protection bodies to integrate standardisation, information, inspection, laboratory testing and certification in one place.

Your life and assets deserve to be preserved, and that's what we are committed to. Our combination of knowledge, expertise and interpersonal skills ensures that we are masters of protective installations. Our intelligence lies in putting prevention strategies into perspective. As an independent expert, we anticipate the risks relating to fire and intrusions. We guarantee the best, so that you can prevent the worst.

VISION

“We want to live in a world where we no longer have to fear the damage caused by fire and intrusions.”

MISSION

As a truly committed partner, we guide you and share our technical skills with you to ensure that you receive the most suitable level of protection for your needs. We give you peace of mind, a better quality of life and a more sustainable business.



ANPI: your expert partner at every stage

THE COMMON GOOD AT THE HEART OF ANPI'S MISSIONS

Primarily, ANPI directly caters to two categories of customer. The first is building and industrial facility managers, who want to monitor their fire and/or intrusion protection installations via an impartial third party. The second is manufacturers and installers who work in prevention, keen to guarantee the quality of their products and services to their own customers.

Indirectly, we also help insurers, who can assess risks covered at the right level and adapt their service offer according to their recovery strategy. On a broader scale, we help authorities reduce the number of accidents, and in doing so, reduce the costs involved in responding to and managing these incidents.

A MULTIFACETED APPROACH FOR ADEQUATE PROTECTION

ANPI is sought out for its technical expertise in very specific fields. But our true added value lies in how our services interconnect, in an intelligent balance between hard and soft skills. Even a perfectly built protection installation can only reach its full potential if it is perfectly integrated into a logical and functional environment. In addition to complying with regulatory requirements, it is putting these prevention strategies into context that matters most. The solutions implemented must be as appropriate and effective as possible to address the risks that are actually incurred. Thanks to our vast experience, ANPI can reframe a mission by putting it into our customer's own context.



“With over 50 years of ongoing experience, research and development, ANPI has become a European leader in the prevention sector.”

A SUSTAINABLE COMPANY FOR YOUR SAFETY

Since its restructuring in 2006, the activities of ANPI are financially independent. As a non-profit organisation, any financial bonuses are used to develop technical platforms, train staff to ensure their expertise remains at the highest level, and on actions to promote our platforms.

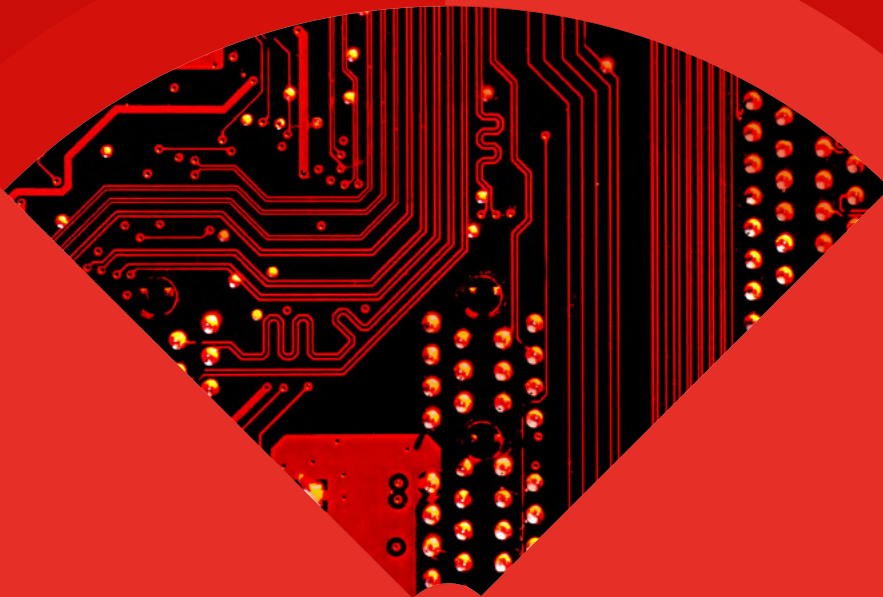
ANPI also makes its experts available to its Members for free, to take part in both seminars and standardisation working groups.

A TANGIBLE SOCIETAL IMPACT

Without ANPI's prevention actions, the financial burden of the losses would be borne by insurers and the government, and above all, the public would suffer the consequences.

With their certifications, a conscientious manufacturer and a specialised installer can stand out from the crowd and steer clear of unhealthy competition from their less trustworthy counterparts. The statistics are also irrefutable: after a major fire disaster, in addition to companies that simply do not open their doors again, more than 28% have to file for bankruptcy within 3 years after resuming business. For businesses, the added value of ANPI is a simple question of avoiding closure! ANPI fully embodies its role as an economic pillar.

TESTING



“ANPI helps all sectors to prevent fire and intrusion risks, thanks to proven methods and tailored resources.”

EQUIPMENT ON THE TEST BENCH

An understanding of markets from A to Z

The Laboratories division is EN ISO/IEC 17025 accredited by BELAC (003-TEST). It mainly conducts tests on prevention and protection equipment. Its field of expertise specifically covers fire, building intrusion, vehicle theft, equipment for the protection of valuables, and more generally, electric and electronic products.

ANPI'S TESTING SKILLS

Given the variety of tests that can be performed on products (performance, climatic, mechanical, EMC), the staff follow a very extensive training programme. This requires a multitude of skills, including understanding performance requirements, understanding the way in which tests are conducted, and the ability to carry them out effectively.

THE ADDED VALUE OF ANPI REPORTS

Our added value lies in the fact that ANPI is explicitly recognised by BELAC, FPS Interior, and the European Commission, or is recognised as an independent third party applying a robust quality system. Users of our products have the guarantee that the product has been tested impartially by qualified operators, using validated methods and cutting-edge equipment.

A TRIED-AND-TESTED ORGANISATIONAL SYSTEM

How is the work divided between our operators? Understanding how an entire alarm system works takes time. ANPI optimises this investment by allowing its operators to follow the entire verification process. Rather than sticking to one test technique, they will therefore work according to market type, which they get to know from A to Z.

ALWAYS AT THE CUTTING EDGE

Thanks to its modern testing equipment, the ANPI laboratory is the partner of choice for a number of innovative industries: voice alarms, video smoke detection, and new communication protocols validation are just a few examples.



AN INDEPENDENT AND IMPARTIAL PARTNER OF CHOICE

Reliability Techniques Repeatability

Two types of test are conducted to verify a product's compliance with the requirements set out by standards or technical notices: operational tests that aim to verify the performance and functionalities required by these standards, and environmental robustness tests that validate the equipment's reliability. The latter can be divided into three broad categories:

- ▶ **Climatic tests**, which verify the product's resistance to heat, cold, humidity and corrosion.
- ▶ **Mechanical tests**, which aim to verify its resistance to impacts, shocks and vibrations.
- ▶ **Electromagnetic compatibility tests (EMC)**, which test its resistance to electric and electromagnetic disturbances.



21 days

IS THE AMOUNT OF TIME THAT A DETECTOR SPENDS IN THE CLIMATIC CHAMBER. IT TAKES AT LEAST TWO MONTHS TO COMPLETE THE WIDE RANGE OF TESTS THAT ARE CARRIED OUT ON A SINGLE DETECTOR MODEL.

DID YOU KNOW?

- ▶ *Wireless fire detection systems are used in listed buildings to avoid laying cables that detract from the aesthetics of the building. The reliability of these systems is notably tested in an ANPI anechoic chamber.*
- ▶ *When fire detection systems are built with components made by different companies, ANPI endeavours to verify their compatibility to offer a performance guarantee to both the installer who will deploy them and to their users.*
- ▶ *ANPI is regularly asked by supervisory authorities to take samples of products from store shelves to check their quality.*
- ▶ *Our ANPI experts can help you develop a set of technical specifications before launching a call for tenders.*
- ▶ *Our technical platforms are likely to be useful in areas other than fire and theft prevention: for example, our equipment and expertise can be used to test the electronic equipment placed on railway lines or train on-board electronics.*

“As a team passionate about prevention and protection, sharing common values, we have the power to bring about change in the prevention sector.”

3/20

ON AVERAGE, ONLY THREE IN TWENTY NEW FIRE DETECTOR MODELS THAT UNDERGO TESTS WILL PASS THE TESTS FIRST TIME. IT'S THE REASON OUR LABORATORIES EXIST.

VERIFICATION ACROSS 4 MARKETS

The laboratory operators follow these 4 steps for a full verification process:

1. ACTIVE FIRE PROTECTION AND PREVENTION

Detection and evacuation:

- ▶ Detection systems
- ▶ Alert and alarm systems
- ▶ Voice alarm and evacuation devices
- ▶ Wire and radio transmission systems

Manual extinguishing media:

- ▶ Portable and mobile extinguishers
- ▶ Extinguishing blankets
- ▶ Portable aerosol dispensers
- ▶ Fire hose cabinets (hose reels)

Automatic extinguishing media:

- ▶ Extinguishing agents (foams, powders, gas)
- ▶ Fixed hydraulic fire-extinguishing systems (sprinklers)
- ▶ Fixed gas fire-extinguishing systems
- ▶ Central fire extinguishing systems
- ▶ Central fire extinguishing systems with extinguishing module
- ▶ Automatic fryer modules
- ▶ Automatic boiler burner modules

2. ACTIVE AND PASSIVE PREVENTION AGAINST BUILDING INTRUSION

Intrusion detection:

- ▶ Detection systems
- ▶ Alarm transmission systems
- ▶ Video surveillance systems

3. PREVENTION OF VEHICLE AND MOBILE OBJECT THEFT

- ▶ Alarm systems
- ▶ Remote immobilisation systems
- ▶ Braking and anti-startup systems
- ▶ Tracking systems
- ▶ Identification systems (RFID)

4. A RANGE OF ELECTRONIC PRODUCTS

- ▶ Electronic, electric and electromechanical devices
- ▶ Information processing devices
- ▶ Laboratory and measurement equipment
- ▶ Electromedical devices
- ▶ Equipment for rail applications
- ▶ Electronic devices for vehicles

ITEMS REQUIRING ACCREDITATION

- ▶ For the exact scope of the ANPI Laboratories' accreditations, consult the technical annex under N°003-TEST (www.belac.be).



NAME OF DIVISION	Laboratories
ACCREDITATION	EN ISO/IEC 17025
LOCATION	Louvain-la-Neuve, Lens
GEOGRAPHICAL COVERAGE	Global
TARGET GROUP	Manufacturers and market regulators
CONTACT	+32 (0) 10 47 52 72 - e-mail: lab@anpi.be

CERTIFICATION



“A certificate provides a guarantee that the product meets the normative document. That’s why we don’t let anything slip through the cracks.”

PRODUCTS AND SERVICES

complying with normative documents

ANPI has been mandated to issue a large portfolio of compliance certificates relating to fire and theft protection products, systems and service companies. Like the Inspection and Laboratories divisions, the Certification division is EN ISO/IEC 17065-accredited by BELAC (003-PROD). It has also been notified by European authorities (Notified Body) under the Construction Product Regulation (number 1134), meaning that it can certify product performance levels with a view to issuing the CE marking. The official recognition that ANPI has received includes our human competences.

WHAT SETS ANPI APART

Continuous updating

ANPI was set up because of the realisation that there was an imperative need to standardise security, leading to the creation of the first Belgian standards. Later, we expanded to a European level. Our dynamic quality system requires the enormous task of remaining continuously up to date. Internally, we continuously ensure that our members of staff have a thorough understanding of their role. We ensure that the methods used for laboratory tests, inspections and certification and monitoring activities are developed in accordance with Belgian (NBN - CEB), European (CEN - CENELEC) and international (ISO - IEC) standard requirements and meet the requirements of the relevant implementing regulations and standards. The traceability of all the changes made to the quality systems is also a requirement that demands the utmost attention.

A supportive service

Certain markets or technologies change very quickly and our customers want to be sure that they can put their products on the European market. In these cases, we write their own reference documents with them.

Meticulous administrative and field work

Our added value resides in the sum of knowledge that we have accumulated and our work alongside our Information division. Authorities create lots of legislation. The lifecycle of a certificate is 3 to 6 years. When it expires, it must be renewed. We carry out meticulous work, whether it is in administrative matters or out in the field. Unlike our competitors, we accept reports from laboratories other than our own. Validating their compliance requires special attention.

“The ANPI brand can attest to the reliability of products not covered by other compliance marks.”



A COMPLEX JOB

Thoroughness Independence Consistency

HAVE YOU HEARD OF THE ANPI
"VOLUNTARY MARK"?

In general, to comply with the normative requirements in place, the customer does not get to choose their mark of conformity. But there are categories of products that are not covered by existing certification marks. This is the case with vacuum sprinklers, for example. An ANPI committee will bridge this gap by establishing its own standard (commonly referred to as a Technical Notice) based on information collected by its documentation centre, and by assuming the responsibility of the products' conformity. That's why you might find the ANPI mark on portable extinguishers, industrial fryer extinguishing modules, and so on.

DID YOU KNOW?

- ▶ ANPI is approved and registered as an accredited testing laboratory and a certification body for fire and intrusion products and systems (CE, BOSEC, ANPI, BENOR et INCERT) by the United Arab Emirates and Qatar.
- ▶ ANPI is a full member of the Belgian Federal Public Service Interior **High Council for Fire and Explosion Safety**.
- ▶ ANPI is authorised to conduct tests and inspections on behalf of **Belgian insurers** that are members of Assuralia.
- ▶ In the Netherlands, we have licensing agreements with **the CCV, the Dutch Centre for Crime Prevention and Safety**. The aim is to carry out inspections and issue certificates as an inspection body in the specific areas of fire detection and extinguishing.



6 months

THE TIME NEEDED TO ATTEST A PRODUCT'S COMPLIANCE WITH THE ANPI MARK.



NAME OF DIVISION	Certification
ACCREDITATION	EN ISO/IEC 17065
LOCATION	Louvain-la-Neuve
GEOGRAPHICAL COVERAGE	Global
TARGET GROUP	Industries, installers
NUMBER OF CERTIFICATES PERMANENTLY MANAGED	1,500
CONTACT	+32 (0) 2 234 36 10 e-mail: cert@anpi.be

INSPECTION



“We are ANPI. We inspect fire and intrusion prevention and protection installations, for your safety.”

INSTALLATION INSPECTION

“ANPI, your independent inspection service, complies with all confidentiality policies with intelligence, independence and integrity.”

The Inspections division conducts inspections on fire and intrusion prevention and protection installations. It carries out different types of missions from the project phase and throughout the installation's lifecycle. These missions have several purposes. First, they verify the installation's compliance with the application standards. Then, during the checks, the Inspections division also verifies the installation's suitability for the protected risk. Finally, these missions ensure that the installation continues to be compliant and that the risk is being properly managed. The Inspections division is EN ISO/IEC 17020 accredited by BELAC (003-INS). This accreditation is issued by BELAC from the Federal Public Service Economy and carries the number 003-INSP. This accreditation demonstrates that ANPI has an independent, impartial and honest inspection service, made up of competent and experienced inspectors who respect all confidentiality rules.

ANPI'S UNQUESTIONABLE EXPERTISE

At ANPI, we act as a third-party organisation, in total independence from the other parties present. Our missions are primarily carried out based on European and Belgian standards, but also international ones. We can also conduct missions according to other technical documents. We are not involved in the choice of projects put forward by our customers, either in their development or in their commercial aspect. We ensure strict compliance with standards. We pursue two objectives: to validate the effectiveness of installations, and to ensure that legal and regulatory requirements are being followed.

Verifying an installation's compliance

Several factors can influence an installation's effectiveness and conformity: lack of attention, lack of knowledge, poor technical solution, hasty execution, or poor management or maintenance. This is where our vast experience and connection between our divisions provide the most added value.

Our missions

From passive to active protection, ANPI inspects all types of installations relating to fire and intrusion prevention and protection. Our inspections are not limited to verifying the technical compliance of the installation; they also involve the assessment of other architectonic (fire resistant separations) and organisational criteria (categories of products, storage structure and type, presence of plastics, etc.). Preliminary steps will verify if the public water network can supply the installations, and other later measures will verify the absence of microbiologically induced corrosion (MiC) or the characteristics of the sprinklers or foam extinguishing agents. For each installation, we make the right assessment and draw up the right inspection plan to best ensure the reliability of the system.

Market development

Previously, the majority of ANPI's missions were determined by insurers' requirements. Now, more and more inspections are being requested by the end customer. This is explained by the fact that beyond the financial aspect of risk reduction, the issue of a site manager's liability may be involved. We don't forget that it's all about saving lives and preserving assets.

HOW TO RECOGNISE AN ANPI INSPECTOR

Honest Forward-thinking Exacting Experienced

- ▶ ANPI inspectors are enthusiasts: volunteer firefighters and specialised technicians who have decided to change direction and put their experience to good use.
- ▶ When they begin working with us, ANPI draws up a training and qualification plan for each inspector.
- ▶ An inspector's work is very technical and varied. For each site and installation, the inspector must be able to assess and understand any potential risks.
- ▶ Inspectors must be fully versed in the reference materials that are they are using. They must be able to apply them, whatever the situation and configurations they may encounter.
- ▶ The sharing of experiences is key. ANPI inspectors regularly support one another and share information. Regular quality meetings allow inspectors to collectively analyse certain complex issues, so they can benefit from the broadest possible expertise.
- ▶ To ensure objective and consistent judgements, each ANPI inspector is supervised in their activities.
- ▶ Our inspectors are your partners.

“Our inspectors are continuously trained so that they can help you, even when it comes to the latest technology.”

“The unique experience of our ANPI inspectors enables them to issue diagnoses that offer the best returns on investment for an optimal risk management.”

20 years

ON AVERAGE, AN ANPI INSPECTOR HAS
15-20 YEARS OF EXPERIENCE.





“Our reputation in prevention is international.”



OUR RANGE OF OPERATIONS

- ▶ Approval of specifications and plans
- ▶ Verification of plans and calculation notes
- ▶ Intermediary inspections during the project phase and implementation phase
- ▶ Support during the provisional and final acceptance of installations
- ▶ Initial inspections and routine checks
- ▶ Concentration measurements for foam installations
- ▶ Concentration measurements for gas extinguishing installations
- ▶ Capacity measurements for water networks (public or private)
- ▶ Air tightness tests on buildings
- ▶ Risk analysis
- ▶ Analysis of technical files according to recognised regulations and standards and according to the applicants' specifications
- ▶ Analysis of specifications' compliance with legislation in force

FIRE PREVENTION MISSION

- ▶ Detection and alarm installations
- ▶ Emergency lighting installations
- ▶ Compartmentation and passive protection
- ▶ Evacuation methods and organisation
- ▶ Primary manual extinguishing media (extinguishers, hose reels, hydrants)
- ▶ Fixed automatic gas, powder or water extinguishing installations (sprinklers, deluge, foam, mist, etc.)
- ▶ Smoke and heat exhaust devices (SHE)

ITEMS REQUIRING ACCREDITATION

For the exact scope of the ANPI Inspection body's accreditations, consult the technical annex under N°003-INSP (www.belac.be).

BUILDING INTRUSION AND THEFT RISK PREVENTION MISSION

- ▶ Installations protecting against building intrusion and theft
- ▶ Access control installations

VEHICLE THEFT RISK PREVENTION MISSION

- ▶ Inspecting anti-theft system installations
- ▶ Alarm systems companies
- ▶ Weapons rooms protection installations
- ▶ Locksmith companies

NAME OF DIVISION	Inspections
ACCREDITATION	EN ISO/IEC 17020
LOCATION	Louvain-la-Neuve
GEOGRAPHICAL COVERAGE	Belgium, Netherlands, France, Luxembourg, Turkey, Sweden
TARGET GROUP	All types of industries, businesses and offices. All bodies or companies concerned with security. E.g. Contracting authorities, owners, consultancy firms, installers, insurers or any other third-party organisation.
NUMBER OF INSPECTIONS PER YEAR	8,000
CONTACT	+32 (0) 10 47 52 61 - e-mail: ins@anpi.be

STANDARDISATION



”In a sector where there is a lot of legislation, staying informed is essential. Standards are continuously changing.”

ANTICIPATE AND ADVISE

ANPI: the precursor to normative texts

ADVANCE FEEDBACK AHEAD OF OFFICIAL STANDARDS

In addition to the “tick box” – an inspection system where you tick the boxes that comply – ANPI’s real job is to bring genuine added value to missions through our experience and professional judgement. This approach is perfectly in keeping with the current regulatory trend of replacing prescriptive texts by performance-based approaches. Fire safety engineering, which is based on analysis and perspective, plays a full role here. As an inspection body, ANPI takes part in working groups organised by insurance bodies and standardisation commissions, on both a national and European level. At this level, the feedback from the Laboratories, Certification and Inspections divisions make us a very high value-added contributor. What’s more, the Standardisation division carries out extensive information updating and distribution work internally.

ANPI WORKING GROUPS FOR STANDARDS WRITING

In Europe, three parties are at the same table: the industry sector, represented directly by manufacturers or by professional associations who are calling for standards; control and certification bodies such as ANPI, which ensure that the standard can be used for inspections; and authority representatives, who ensure that the products meet user warranty requirements.

THE BENEFITS OF COLLABORATING WITH ANPI

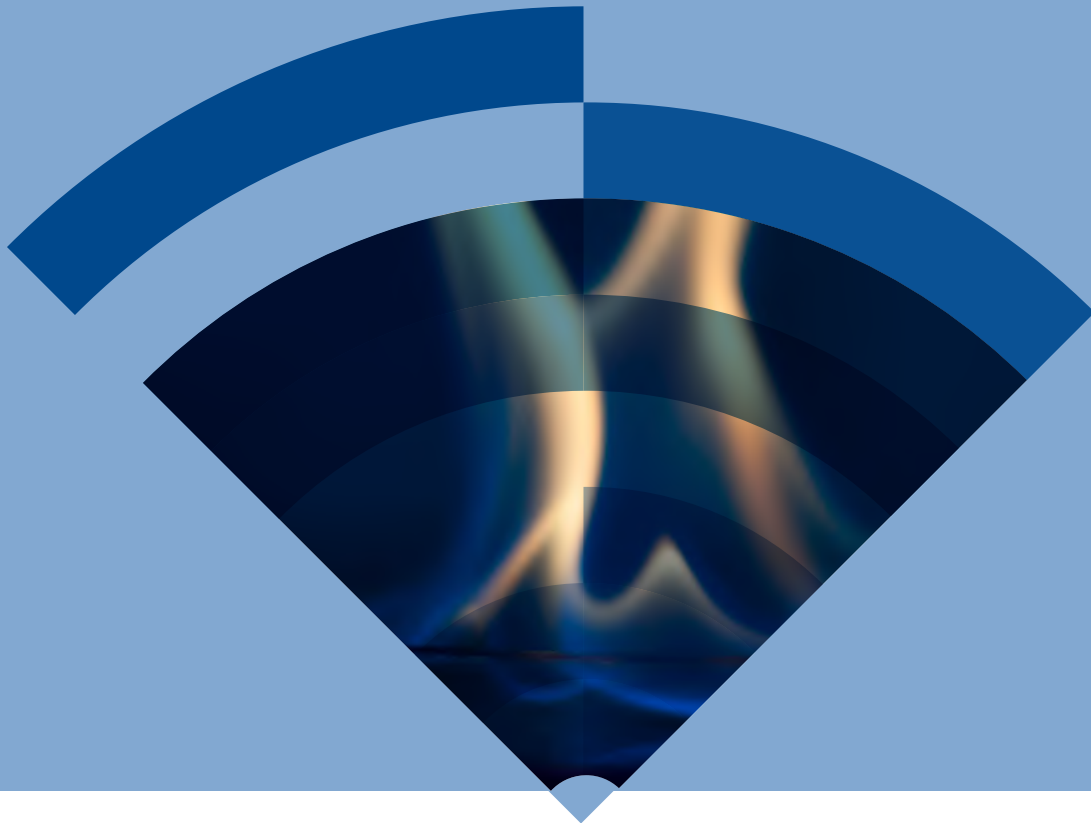
By contributing to the drafting of legal, technical or normative requirements, the Standardisation division is at the very source of information. This privileged access allows the division to specify the precise intention of each normative requirement to the specialists who work at ANPI and other relevant parties. In addition to this considerable standardisation effort, ANPI is also a precursor to regulatory texts. Where no standard exists, for example when it comes to new technology, ANPI is able to issue an internal document, an NTN (Technical Notice), that characterises the product and serves as a technical reference.



BENEFICIARIES OF THE EXPERTISE PROVIDED BY ANPI (NON-EXHAUSTIVE LIST)

- ▶ CEN: European Committee for Standardisation
- ▶ CENELEC: European Committee for Electrotechnical Standardization
- ▶ NBN: Bureau de Normalisation, responsible for publishing standards in Belgium.
- ▶ CEB-BEC: Belgian Electrotechnical Committee
- ▶ AFT: Agoria Fire Technologies
- ▶ BFSN: Belgian Fire Sprinkler Network
- ▶ CFPA-E: Confederation of Fire Protection Associations Europe
- ▶ EFSN: European Fire Sprinkler Network
- ▶ Prevention Forum: Insurance Europe technical consultation commission (ex-CEA), a European confederation of national insurance company associations
- ▶ BUCP: defends the common interests of Belgian certification bodies, inspection bodies and testing laboratories for construction products with regard to voluntary Belgian conformity marks, European regulatory CE marks, and the Belgian accreditation of these entities.
- ▶ BUtgb-UBAtc: Belgian union for technical approval in construction
- ▶ BOSEC, INCERT, BENOR mark committees, etc.
- ▶ SFPE Benelux: Society of Fire Protection Engineers
- ▶ Federal Public Service Interior High Council for Fire and Explosion Safety

INFORMATION



“In 2022, only one in three Belgians considered fire prevention. ANPI works to bring better awareness to the public.”

INFORMATION, DOCUMENTATION AND COMMUNICATION

ANPI is an information resource that is being constantly updated, aimed at professionals working in personal and asset security, such as prevention consultants, manufacturers, installers, users, fire services and authorities. Our Documentation department collects, processes and analyses all information relating to fire and theft prevention.

All the data collected by ANPI is analysed and distributed across our different media: our Fire & Security Alert magazine, Fire & Security Alert newsletter, our website anpi.be, not to mention social media.

OUR INTELLIGENCE IS OUR STRENGTH

- ▶ Our comprehensive view of things and our desire to share our knowledge.
- ▶ Our thoughts and perspective on everything we find on the web!

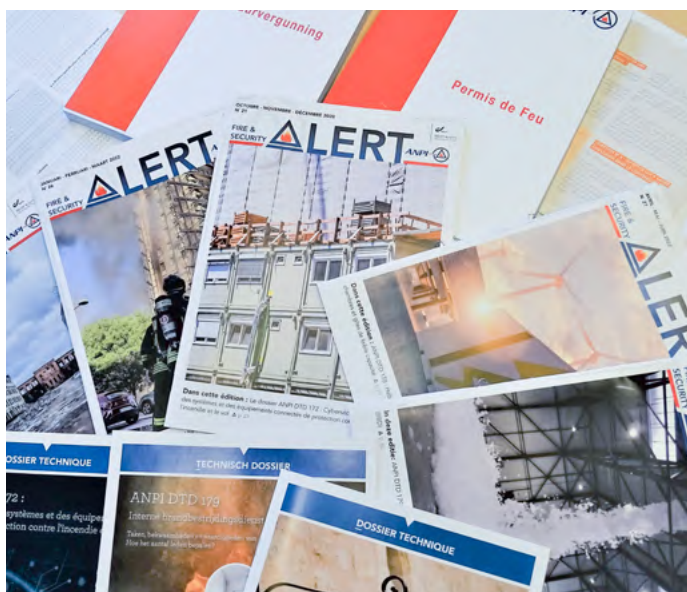
**“How often should mandatory checks be carried out?
What is the lifespan of a fire extinguisher?
How many fire hose cabinets should I install?”**

Company security managers contact us for all types of problems, sometimes linked to a multi-disciplinary breadth of knowledge. Our role is to clarify a point concerning work legislation or construction, explain how to organise an evacuation exercise, or remind people of the rules of building compartmentation. We can answer basic questions directly. When they relate to more specialised topics, such as “What type of valve do I need for our hose reel water supply?”, these are sent and processed internally to provide a more comprehensive and technical response. Ultimately, we are here to bring customers useful information that they can use to support their decision-making.

ANPI IS INVOLVED IN PUBLIC AWARENESS

Our contribution is indirect. For example, we can collaborate in preparing a document or video relating to fire and/or intrusion prevention. Sometimes, we are tasked with proofreading draft brochures, articles or publications issued by an administration, federation, another prevention organisation or a company.

As a reminder: fires claim hundreds of victims every year. Smoke and burning gases can spread throughout a house within three minutes. Without an immediate reaction, it can become too late to act or escape. ANPI endeavours to promote fire detection and extinguishing methods for residential use.



ANPI'S MOST REQUESTED DOCUMENT

The fire permit. This form must be completed by all parties concerned whenever hot work – such as welding or cutting – is carried out in a company. This type of work can cause a huge number of accidents! Our fire permit is in fact a small risk analysis that allows the prevention advisor and the machine operator to understand the potential fire risks, while meeting the requirements of the Belgian Wellbeing at Work Code and the requirements of insurers.

REGULATORY MONITORING

ANPI has developed a monitoring service that customers and their staff can subscribe to, whereby they regularly receive a regulatory and normative alert bulletin.

SEMINARS AND WEBINARS

We regularly organise seminars / webinars and focus on the quality and/or accessibility of our events, which have proved to be a great success among security professionals.

Meanwhile, we are increasingly sought after for events organised by third parties and partners. In addition to providing financial support and involving our experts, our team can help develop and schedule the event.

CONCLUSION

All major decisions made in terms of prevention stem from real incidents that the experts have been able to learn from. The knowledge and insights gained by ANPI over the years form the foundations of its growth and development.

“As your partner, we provide leading-edge advice and expertise with method and precision to ensure you get the most suitable level of prevention.”



MEMBERSHIP CONTACT publications@anpi.be

INFORMATION CONTACT info@anpi.be

DOCUMENTATION CONTACT documentation@anpi.be

“ANPI: your partner
against fire and
intrusion.”



Send us your questions

**REQUEST DETAILS
ON TESTING PROCEDURES**

lab@anpi.be | +32(0)10475272

**WHEN SHOULD I SCHEDULE
A ROUTINE CHECK
OF MY INSTALLATION?**

ins@anpi.be | +32(0)10475261 or 66

**WHERE CAN I REQUEST A
TECHNICAL OPINION ON FIRE
PROTECTION?**

ins@anpi.be | +32(0)10475261 or 66

**DOES MY COMPANY NEED
TO BE CERTIFIED TO WORK AS A
SPECIALIST COMPANY?**

cert@anpi.be | +32(0)22343610

**IS THIS PRODUCT
CERTIFIED?**

cert@anpi.be | +32(0)2234361

**WHO IS COMING TO INSPECT
MY INSTALLATION?**

ins@anpi.be | +32(0)10475261 or
66

**REQUEST
A QUOTE**

sales@anpi.be | +32(0)10475245 or 46

**WHAT IS THE FIRE PERMIT AND
HOW DO I ORDER ONE?**

publications@anpi.be | +32(0)10475210

**HOW DO I ORDER
AN ANPI DOSSIER?**

publications@anpi.be | +32(0)10475210

**HOW DO I BECOME A MEMBER
OF ANPI?**

info@anpi.be | +32(0)10475210

**IS ANPI ACCREDITED FOR THIS
ACTIVITY?**

quality@anpi.be | +32(0)10475243

FOR ANYTHING ELSE:

info@anpi.be

“The knowledge
that ANPI has
accumulated over
the past 50 years
is invaluable.

And our
expertise is built
on remembering
that knowledge.”

