

WELDFORCE™
international

Our Strength



WELDFORCE™
international

Plot # 235, Udyog Vihar, Phase - 1, Gurgram-122016,
Haryana, India

+91-124-4278267 +91-124-4278268

Contact@weldforce.net

www.weldforce.net

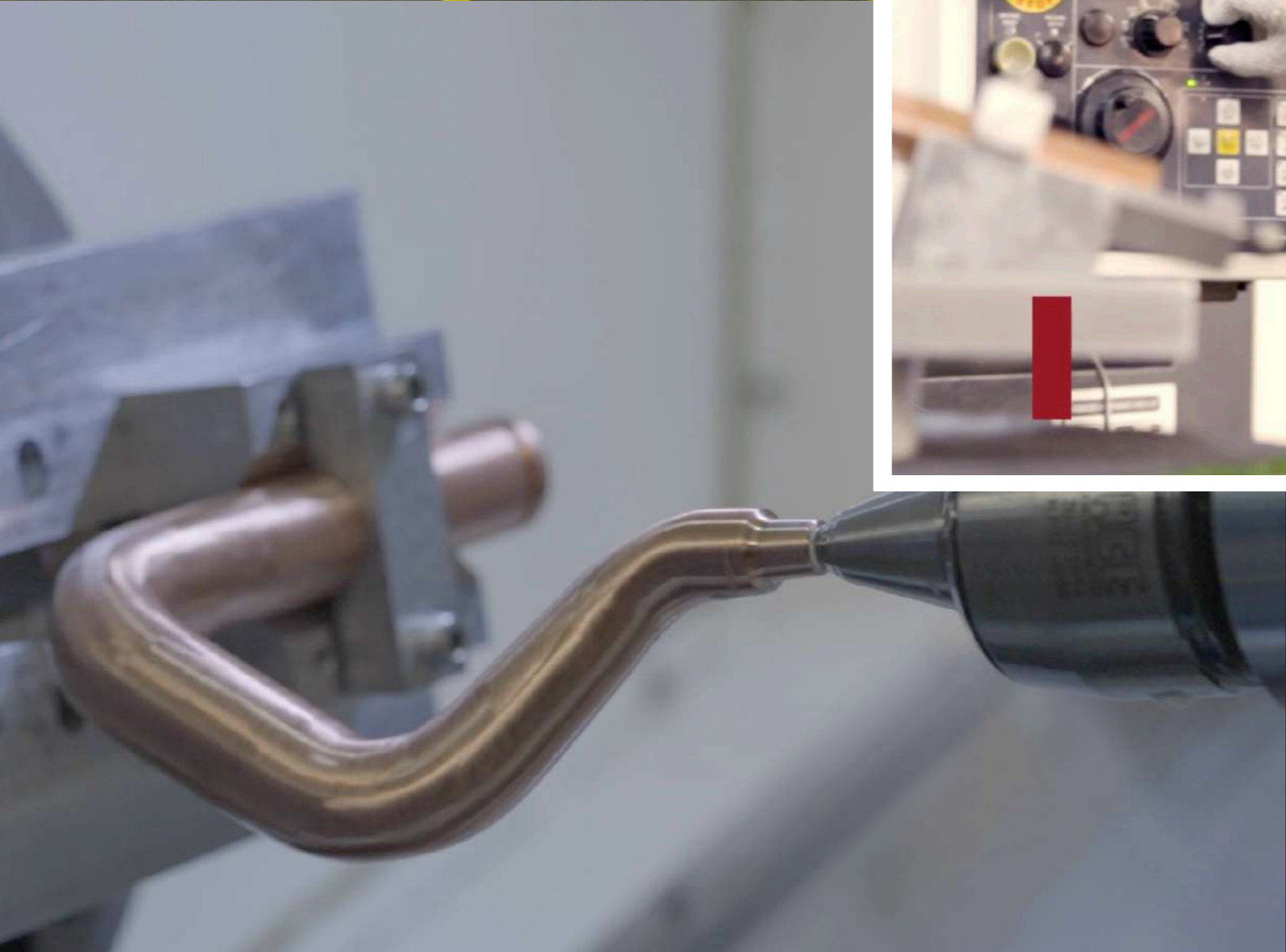


Excellence In
**Resistance
Welding**



About us

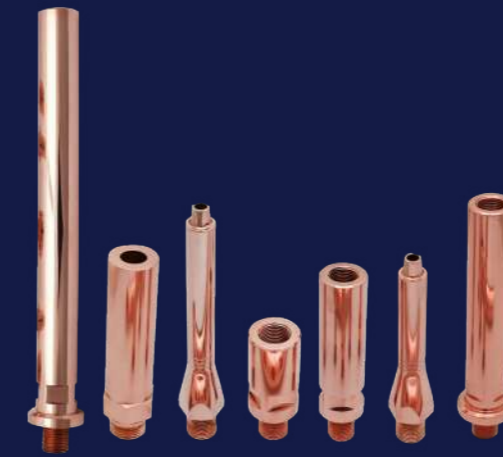
Our company WELDFORCE INTERNATIONAL manufactures complete range of resistance welding consumables like Gun arms, cold formed caps & electrodes, shanks & adaptors, weld heads for projection & stud welding applications & seam welding wheels.



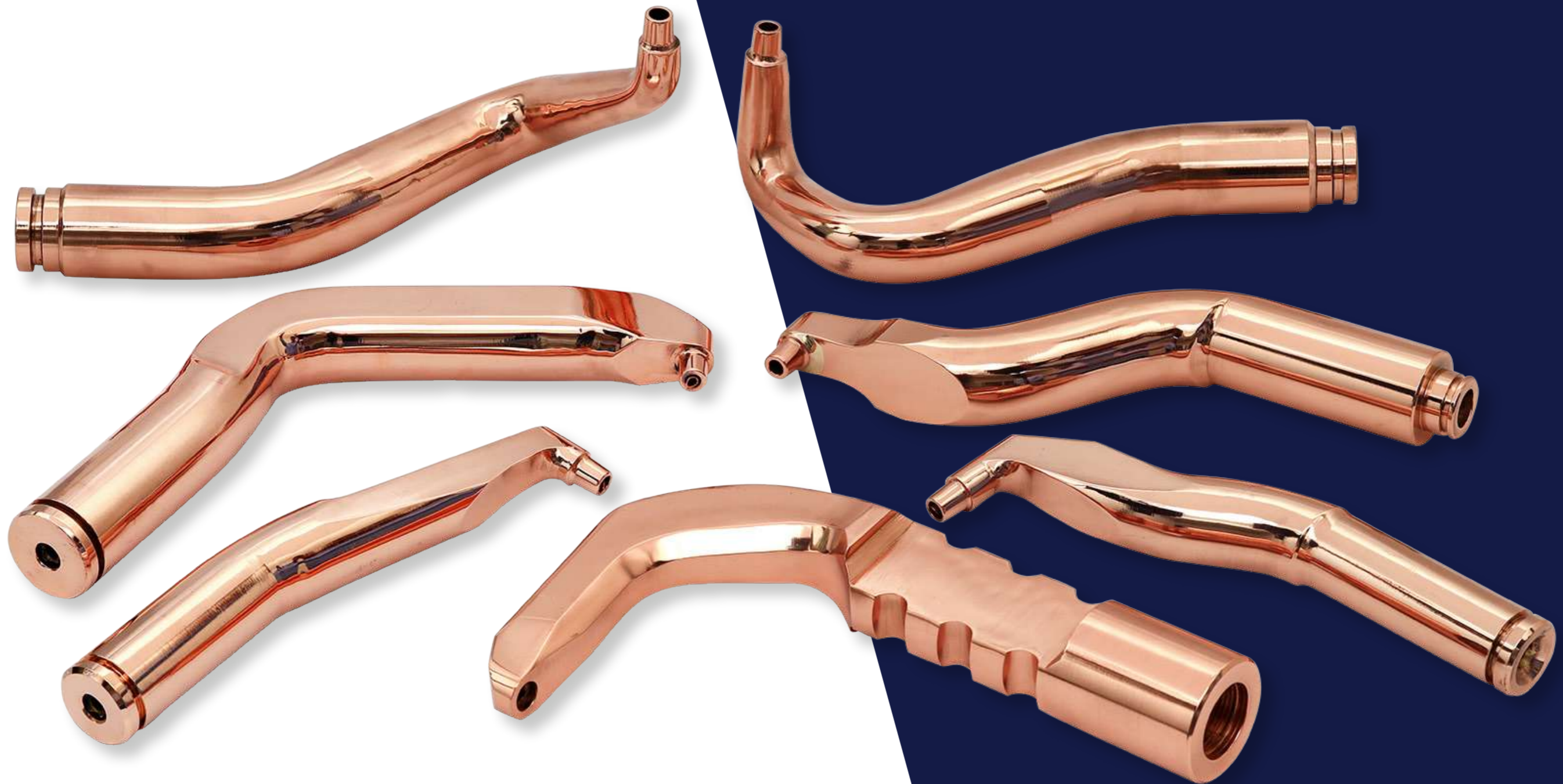
State-of-the-art machinery with
well-trained and skilled manpower



HOLDERS & SHANK ADAPTORS:



Hex and Round Adaptors in CuCrZr, NiSiCu, CoBeCu, NiBeCu, and 2%BeCu



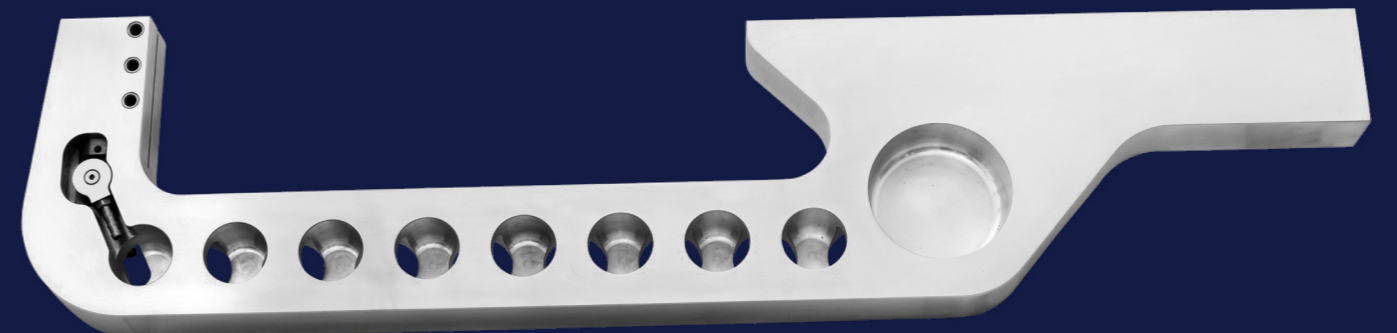
We are the leading manufacturer of all kinds of holders & shank adaptors (straight & multiple bend) through Cold bending process in RWMA CLASS -2 & 3 materials

GUN ARMS in Copper alloys

Manufacturing Arms of Resistance Welding Guns in all the Grades & Classes of Copper Alloys, Like CuCrZr (C18150), CuNiBe(C17510) and CuNiCrSi(C18000)



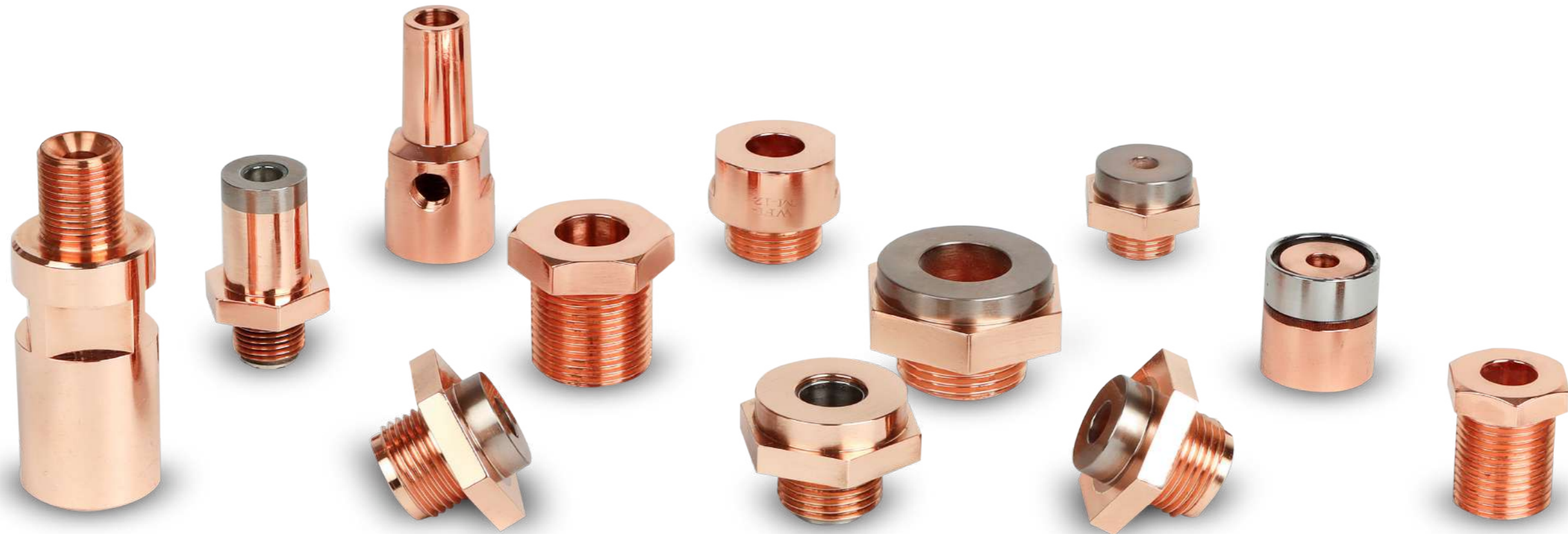
GunArm in Aluminium Alloy A7075-T651



Welding Heads for projection & stud welding applications:



Straight, Single Bend,
Double Bend Electrodes,
Square Faced Electrodes, and
Swivel Head Electrodes



In resistance fastener welding, the quality of material & design of weld head is very important, WELDFORCE manufacture high standard of WELD HEADS in various RWMA CLASS materials with Tungsten soldered inserts or without through induction brazing process , gives better results & productivity.

Cold Headed & Machined Caps:

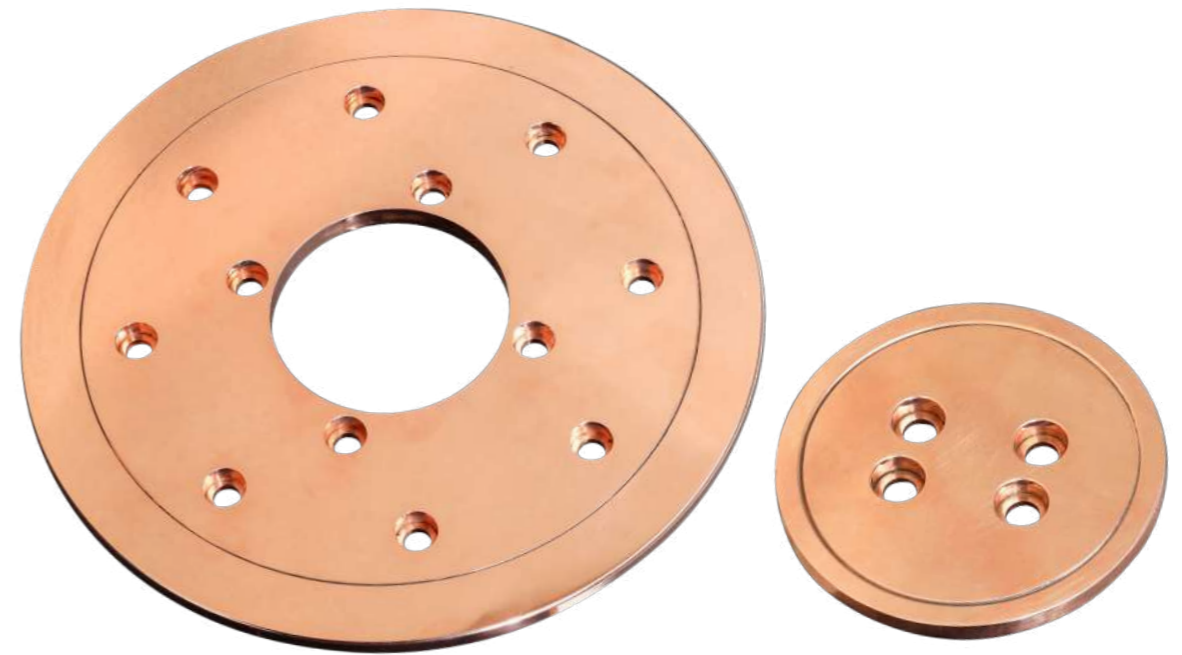
We are specialized in manufacturing standard and non-standard caps & electrodes with high quality of material to meet BIW standards for all OEMs & their tier-1 customers.



Resistance welding male and female Caps



Special parts for all kind of resistance welding equipments & fixtures :



We supply forged Seam welding wheels in Class 2 CuCrZr and Class 3 BeCu materials. Our forged wheels give enhanced weld performance because of their fine grain structure, higher hardness & good electrical conductivity.



Design & detailing Center:

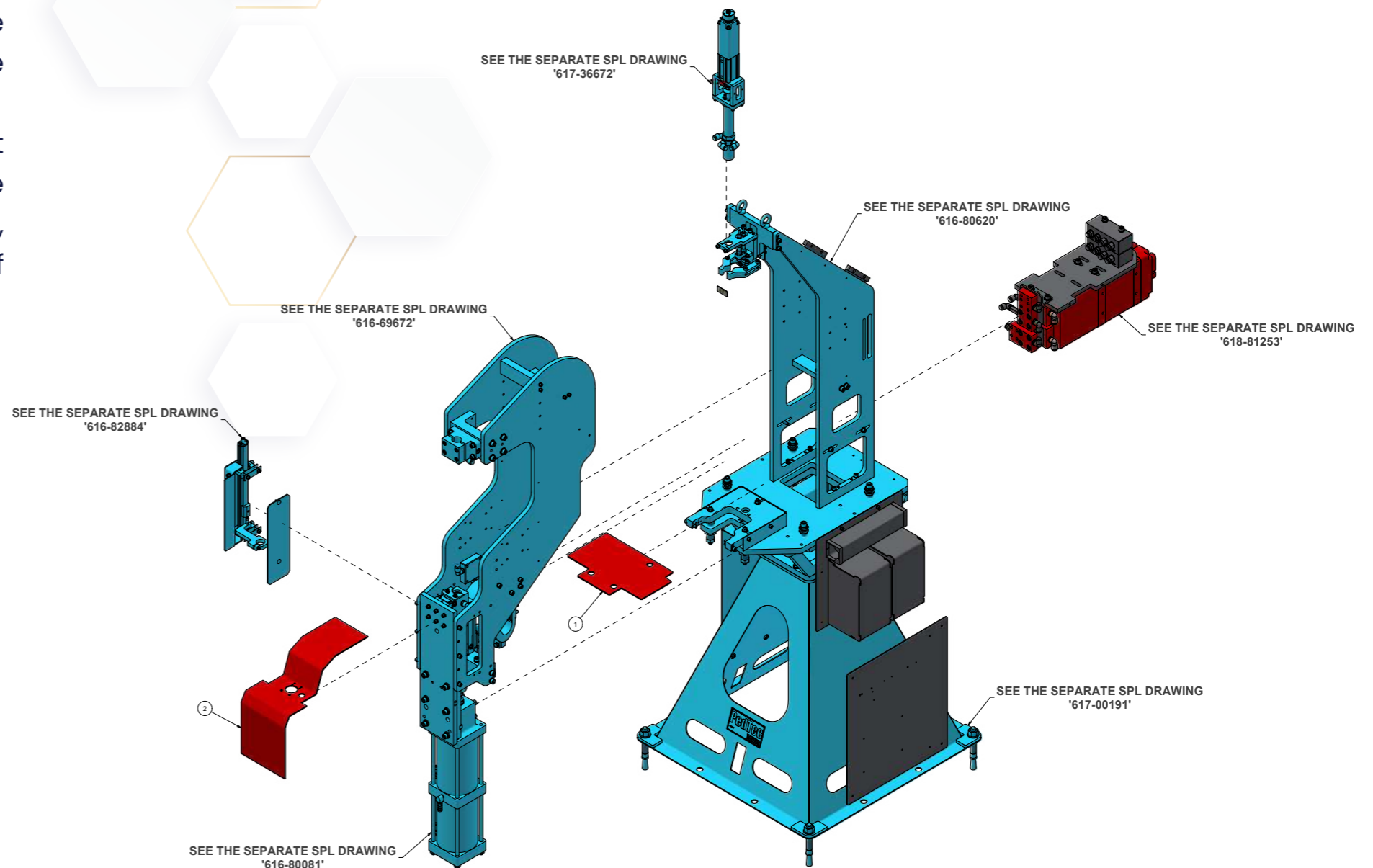
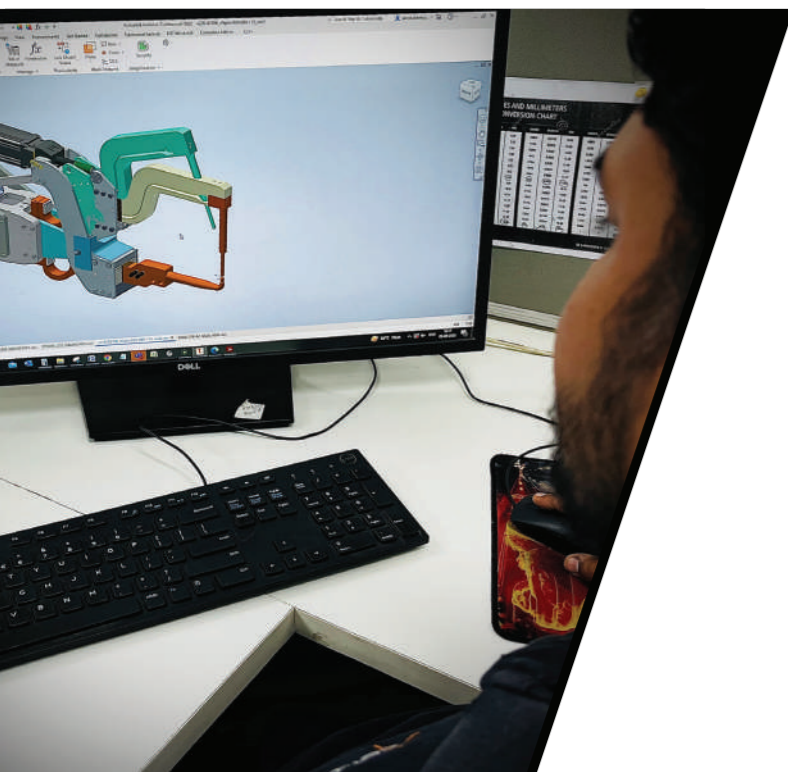
In addition to the manufacturing,

We are having dedicated CAD division having command over CAD software like AutoCAD Inventor, CREO , SOLID WORKS etc to support our present domestic & overseas customers for their detailing & design services requirements.

We are engaged in providing Design services for complete project lifecycle for multiple Industries CAD. The designs are developed using highly reliable software like PTC Creo, Autodesk Inventor, Siemens NX, AutoCAD and Dassault Catia. We do use PLM software like Windchill. We provide vast range of Engineering solution including drawing, design and CAD related services to align with the needs of our clients.

Our Engineering Services

- 3D Modeling & Drafting
- Engineering Change Notification
- CAD Drafting
- BIW Fixture Design
- Documentation
- Reverse Engineering



Customer List:



Physical and mechanical properties

Copper and aluminum alloys

Alloy Grade	Standard Chemical Composition%	International Standards	Hardness	Electrical Conductivity	Elongation	Tensile Strength MPa N/mm ²
RWMA CLASS 2 Cu.Cr.Zr. Copper Chromium Zirconium	Chromium : 0.6 to 1.2 Zirconium : 0.06 to 0.15 Copper : Balance	2.1293 C18150 CW106C	70 to 85 HRB	: ≥ 75% IACS	>13%	>500
RWMA CLASS 2 Zr.Cu. Zirconium Copper	Zirconium : 0.06 to 0.15 Copper : Balance	2.1580 C15000	68-72 HRB	: ≥ 90 IACS	>15%	>380
RWMA CLASS 3 CuCo2Be Cobalt Beryllium Copper	Cobalt : ≥ 2 % Beryllium : ≥ 0.5 % Others : <0.15% Copper : Balance	2.1285 C17500 CW104C	93 to 1005 HRB	: ≥ 45% IACS	12%	>720
RWMA CLASS 3 CuNi2Be Nickel Beryllium Copper	Nickel : ≥ 2 % Beryllium : ≥ 0.5 % Others : <0.15% Copper : Balance	2.1285 C17510 CW110C	93 to 100 HRB	: ≥ 45% IACS	12%	>720
RWMA CLASS 3 CuNi2Si Nickel Silicon Copper	Silicon : ≥ 2 % Nickel : ≥ 0.5 % Others : <0.15% Copper : Balance	2.1285 C18000 CW111C	93 to 102 HRB	: ≥ 45% IACS	15%	>720
RWMA CLASS 4 CuCoBe2% Cobalt Beryllium Copper	Cobalt : ≥ 0.5 % Beryllium : ≥ 2.0 % Others : <0.15% Copper : Balance	2.1247 C17200 CW101C	38 HRC	: ≥ 25% IACS	≤8%	>1100
Aluminum 7075 T651		Al Zn Mg Cu 1.5 EN AW-7075 EN AW-Al Zn5.5 Mg Cu	80 to 85 HRB	: ≥ 32% IACS	≥10%	>580

Physical and mechanical properties

RWMA Class 10, 11, 12, 13 and 14

RWMA CLASSIFICATION	Properties	Hardness	Density	Electrical Conductivity	Tensile Strength
CLASS 10 (1W3)	Tungsten : 70% Copper : 30%	8-90 HRB	14.18 Grams/cc	47-52%	63 KSI
CLASS 11 (10W3)	Tungsten : 75% Copper : 25%	95-98 HRB	14.80 Grams/cc	42-50%	90 KSI
CLASS 12 (30W3)	Tungsten : 80% Copper : 20%	100-104 HRB	15.60 Grams/cc	40-48%	98 KSI
CLASS 13 (100W)	Tungsten : 100%	39 HRC	19.28 Grams/cc	30%	150 KSI
CLASS 14 (100M)	Molybdenum : 100%	86-92 HRB	10.20 Grams/cc	30%	80 KSI

Disclaimer: All Logos, brand names or company name mentioned or printed in this catalogue are properties and registered trademark of their respective companies.