

A background image showing a robotic arm in a welding cell. The arm is white and grey, with a welding torch at the end. It is positioned over a metal workbench with various fixtures and components. The image has a blue tint.

Increased Welding Productivity

Effortless No-Code Programming

Extensive Integration Options

Consistent Quality of Welds

# SmoothTool

MADE FOR WELDING

Smooth  
Robotics



# Cobot Welding | increase your throughput

## Future-proof your offerings and welding capabilities

If you are looking to automate your manual welding and have high mix and low volume parts, a cobot welding solution is the right choice for you. With the strength of being flexible, reliable, and built to cooperate in a shared workspace the cobot welding solution is a powerful tool for any welder or operator. It comes with a programming interface that is easy to use and a guarantee of consistent welds.

## Experience the Power of Collaboration

Cobot Welding systems are specifically designed to work alongside human operators, enhancing productivity and efficiency. By harnessing the strength of collaboration, this state-of-the-art technology ensures a harmonious and synergistic working environment.

### The solution to

#### **Lack of skilled welders:**

Give your welders the best tool for maximizing their efficiency

#### **Repetitive welds:**

Consistently delivers high quality results for long or repetitive welds

#### **Changing demands:**

Highly adaptable solution that enhances market responsiveness





# SmoothTool | automate your welding

## All you need to get the job done and deliver perfect welds

SmoothTool is a user-friendly cobot welding package, catering to various welding tasks.

Its program structure ensures exceptional flexibility, allowing for effortless incorporation of weaving patterns, offset items, stitch welds, or multipass welding.

Compatibility with both CB and e-series robots as well as the new UR20 means that all features function across all UR's robot types.

SmoothTool offers extensive integration options, allowing it to seamlessly integrate with various robotic welding power sources from leading brands like Fronius, ESAB, Kemppi, Lorch, WECO, and EWM.

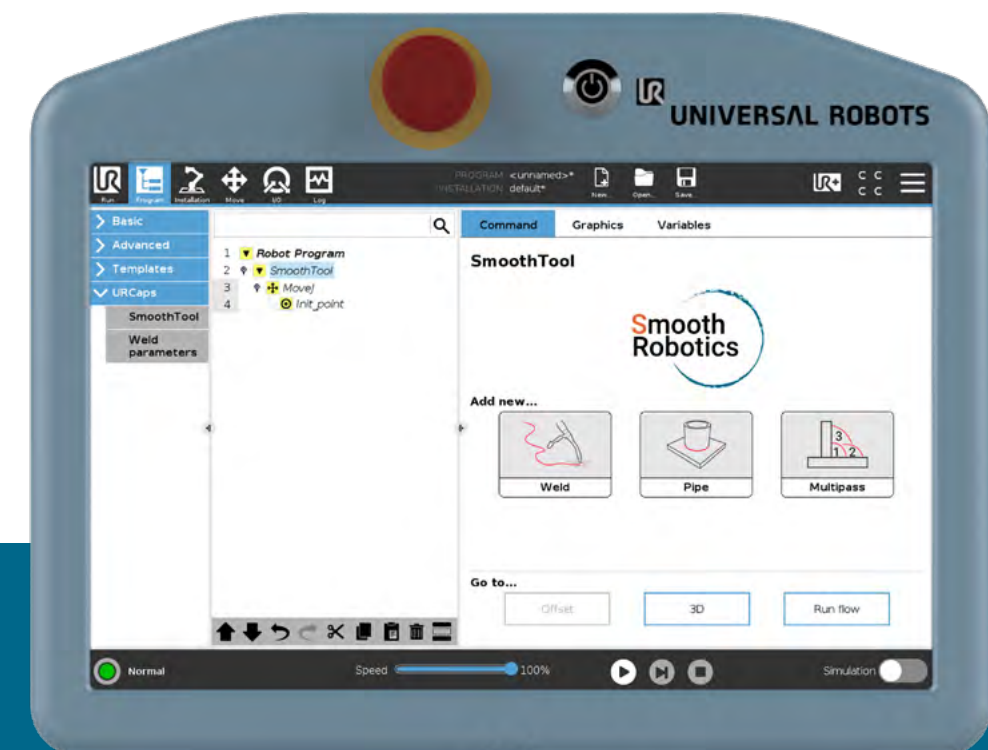
Additionally, it supports integration with all other power sources, whether manual or robotic, ensuring compatibility across a wide range of equipment.



**User-friendly interface:** Intuitive No-code programming

**Programming Flange:** Use the Programming Flange to show your robot how you want the job done.

**Power Source agnostic:** Use your preferred power source



Learn more about SmoothTool





# Companies are already **reaping the benefits of Cobot Welding**

Explore more case stories  
on our website



*On the ease of use, setting up to begin welding was the most important factor for us. We did not want to spend 30 minutes programming for 15 minutes of welding. The Smooth Robotics Software has hands down been epic in quick programming.*

*I have found that if we have to weld more than 12" in length, it is more effective to use the robot. Even for just 1 part. This is a game changer.*



Shawn Wentzel  
Owner - Wenteq Inc  
California, USA



Sven-Ingvar Björck  
Owner, Vattholma Mekano AB  
Uppsala, Sweden



*It's very difficult to find skilled welders and a lot of our work is actual weld time, so that's why we bought the robot.*

*SmoothTool makes programming the robot easy and that's what made it the right fit for us. It's still new to us, but we already have minimum 20-30% in time savings on the welding jobs.*







## Features | advanced made easy

SmoothTool offers a comprehensive welding software solution with all the tools that a welder needs.

The advanced capabilities of SmoothTool allow you to explore the potential of cobot welding and experiment with different methods of production automation to achieve the best possible outcome.

Learn about our software highlights on the following pages.

Other features available: Slope down, Run Flow page, parameter profiles, weld templates, customizable default values, support for external switch/light/fume extraction and much more!

Read about SmoothTool features on our website

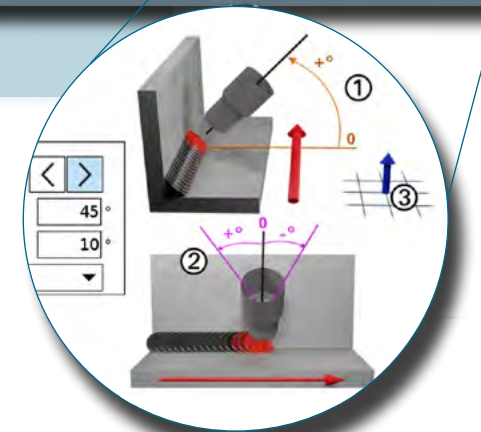
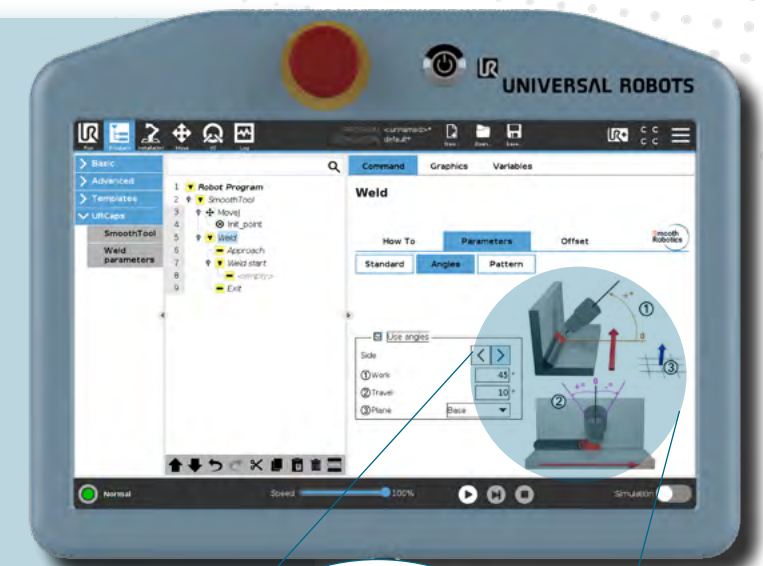


## The Angle System

Set your desired work and travel angles with ease and precision

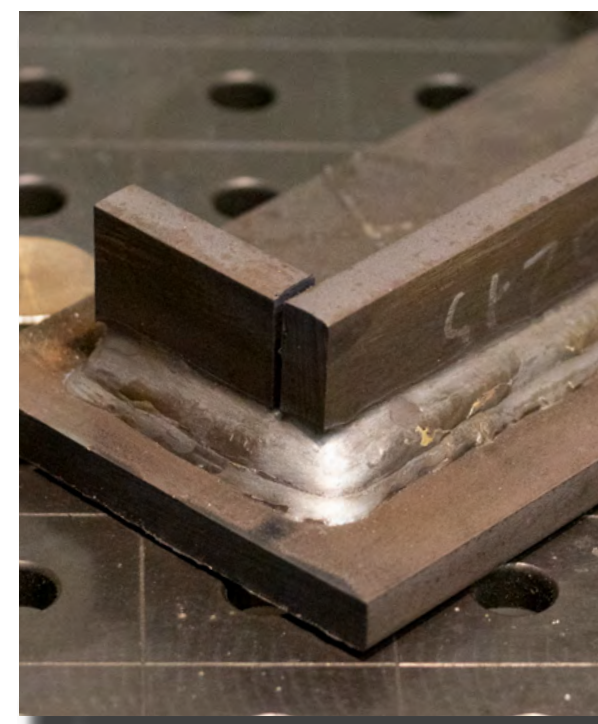
### Feature benefits:

- Achieve superior weld quality with consistent angles of the torch throughout the whole weld
- Precise manual angle programming is no longer required
- Complex welding scenarios such as corners are effortlessly handled by error-free angle control



## Multipass Welding

Enhance your workflow with custom multipass welds



### Feature benefits:

- Quick and easy setup of the number of passes, their individual length and other weld parameters
- Ability to save your multipass weld settings for future use
- The fully customizable Multipass system ensures smooth and efficient delivery of strong and reliable multipass welds

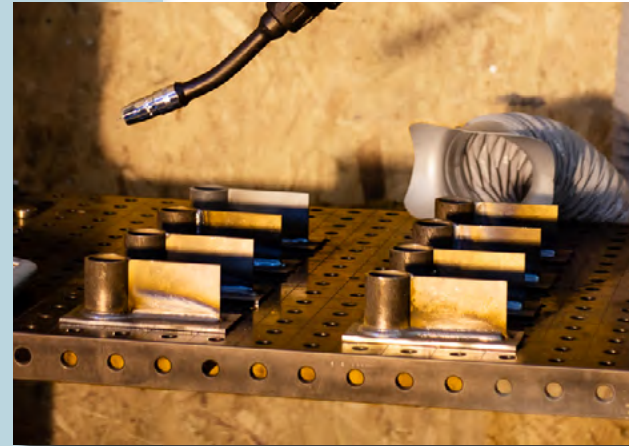


## The Offset Feature

Simply copy and paste your welding

### Feature benefits:

- Conveniently relocate your welding program to a new location by copying your existing program and placing it elsewhere
- Precise control over offset adjustments in the X, Y, Z dimensions, and orientation
- Streamlined program relocation with the intuitive three-point offset method guarantees a seamless user experience

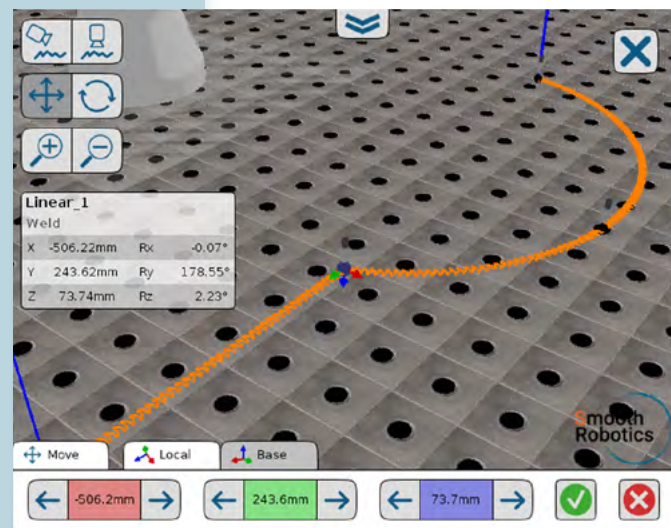


## 3D Universe

Prevent errors by visualizing your welding path

### Feature benefits:

- Gain better understanding of your welding path and programming decisions with the ability to preview and correct your welding program
- The “touch-up” function enables you to make adjustments by moving points in the 3D space and modifying torch angles
- A welding table and robot base can be incorporated into the scene to provide a tangible and scaled environment for your convenience

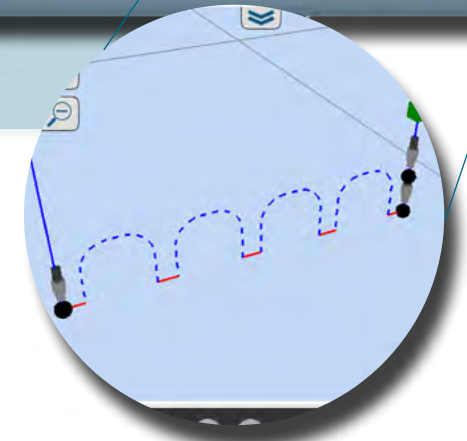
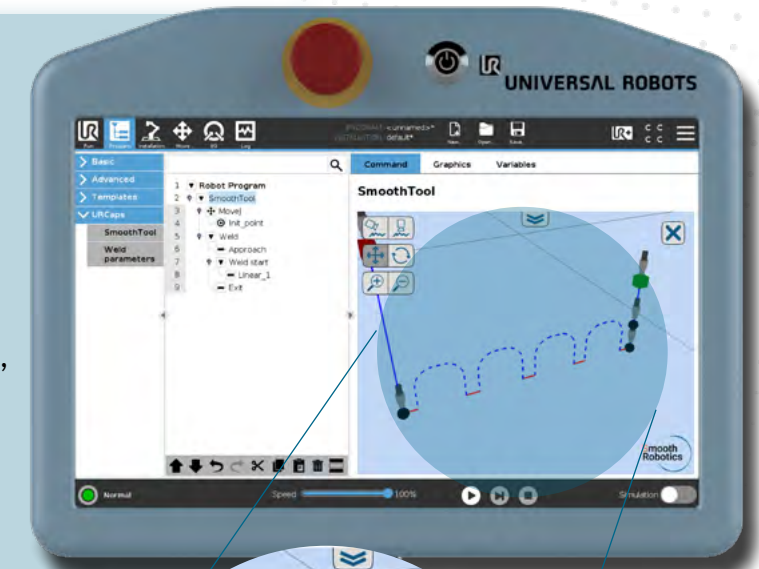


## Stitch Welding

Reduce your costs with custom stitch welds

### Feature benefits:

- Optimize your welding technique to cut production costs associated with use of material
- Flexible customization of parameters such as stitch length, number of stitches, air speed and torch retraction distance for precise control over your welding process
- The potential for warping, burn-through and other weld defects is easily mitigated



## Weaving patterns

Weaving made easy with SmoothTool

### Feature benefits:

- Achieve desired results with four main weaving patterns: Trapezoid, Zig Zag, Circles and Crescent
- Streamline your weave bead welding with full and precise control over the torch movement with each pattern
- Applicable on both linear and circular weld segments



# SmoothTool

## made for welding

We have partners all over the world.  
Find one near you.



**Your local Smooth Robotics Partner:**



For more information visit us at:  
[www.smooth-robotics.com](http://www.smooth-robotics.com)

Smooth Robotics ApS  
Hollufgårdsvej 31  
DK-5260 Odense, Denmark  
+45 41273712  
[sales@smooth-robotics.com](mailto:sales@smooth-robotics.com)

