



世商焊材  
光耀世界!  
SZESHANG WELDING MATERIALS  
ENLIGHTEN THE WORLD

世商焊材  
About us



公司地址  
山东省德州市夏津经济开发区  
Address  
Xiajin Economical Development  
Zone Dezhou City,  
Shandong Province

致电我们  
Telephone



国内销售部  
0534-7593198  
International Sales Department  
0534-2605557

信息传输  
Information  
transfer



传真 Fax  
0534-7593199  
邮箱 E-mail  
sales@szewelding.com



**SZESHANG**  
WELDING MATERIALS

山东世商焊材有限公司

SHANDONG SZESHANG WELDING MATERIALS CO.,LTD.



精工立世  
质诚拓商

JINGGONG LISHI  
ZHICHENG TUOSHANG







世商焊材  
SZESHANG WELDING MATERIALS

## 目录 CONTENTS

企业简介  
Enterprise  
Introduction  
P/01-02

企业文化  
Enterprise  
culture  
P/03-04

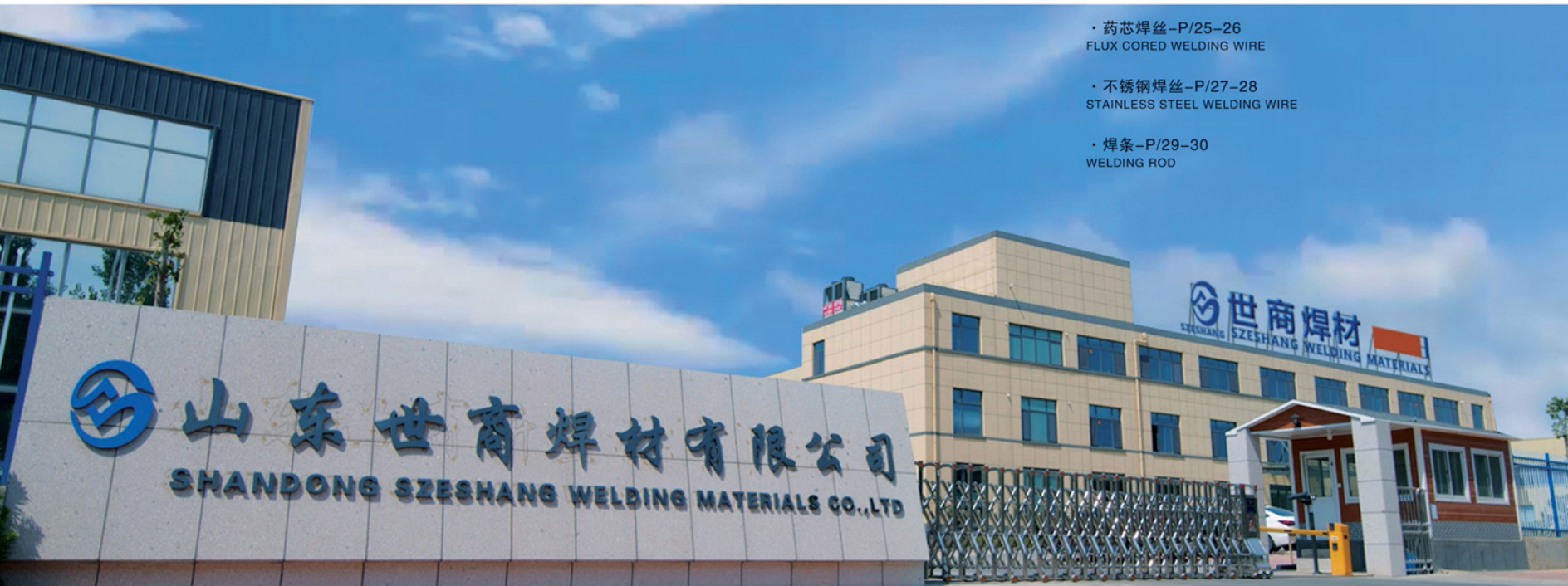
资质荣誉  
Qualifications  
and honors  
P/05-06

生产设备  
Production  
equipment  
P/07-10

科研设备  
Scientific research  
equipment  
P/11-12

### 产品一览-P/13-30 Product Overview

- 气体保护实芯焊丝-P/15-16  
GAS SHIELDED WELDING WIRE
- 埋弧焊丝- P/17-18  
SUBMERGED ARC WELDING WIRE
- 低合金钢气保焊丝-/P/19-20  
LOW ALLOY STEEL WELDING WIRE
- 铝及铝合金焊丝1-P/21-22  
ALUMINIUM ALLOY WELDING WIRE
- 由母材组合选择焊丝-P/23-24  
CHOOSE THE WELDING WIRE ACCORDING TO THE BASE METAL
- 药芯焊丝-P/25-26  
FLUX CORED WELDING WIRE
- 不锈钢焊丝-P/27-28  
STAINLESS STEEL WELDING WIRE
- 焊条-P/29-30  
WELDING ROD







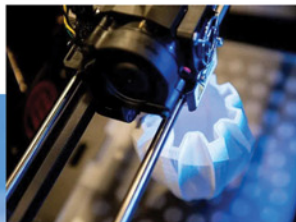
## ● 企业简介 >>>>>

Company Profiles

山东世商焊材有限公司是一家致力于“创新、绿色、环保、节能”的省级科技型企业，专业从事实芯焊丝、铝合金焊丝、不锈钢焊丝及钛合金焊丝的研发、生产、销售和服务；年产实芯焊丝4万余吨；铝合金焊丝3000余吨；不锈钢及钛合金焊丝1000吨；被广泛应用于新能源汽车制造、桥梁、航空、3D打印及高铁等领域。

从制造到智能制造，山东世商焊材有限公司同步投入MES系统及5D网络信息模块，以便更准确、更及时地服务客户。公司顺利通过ISO9001质量管理体系、环境管理体系（ISO14000）和职业健康安全管理体系（ISO45000）认证，并顺利取得CCS和ABS认证。

未来，公司将继续秉持着“技术决定价值、服务成就未来”的产品思路，不断完善和提升产品创新性、环保性、节能性，加速推进企业高质量发展，持续为国内外客户提供优质的产品和高效的服务。



Shandong Szeshang Welding Materials Co., Ltd. is a provincial technology enterprise dedicated to "Innovation, Green, Environmental, Energy Saving", specialized in R & D , Production, Sales and Services of Solid wire, Aluminium welding wire , Stainless steel wire and Titanium alloy wire; The annual output amounts to more than 40,000 tons of solid wire; 3,000 tons of aluminum alloy wire; 1000 tons of stainless steel and titanium alloy wire; They are widely used in new energy vehicle manufacturing, bridge, aviation, 3d printing and high-speed rail.

From manufacturing to intelligent manufacturing, Shandong Szeshang Material Co., Ltd. Input MES system and 5d network information synchronously , in order to service every customers more accurately and timely . Szeshang welding has successfully passed the ISO9001 quality management system, Environmental management system (ISO14000) and Occupational health and Safety management system (ISO45000) certification, and approved by CCS and ABS Certification.

In the future, Szeshang welding will continue to uphold the core idea of " technology determines value, service leads the future", improve innovation, environmental and energy saving constantly, advance high-quality development, in order to provide high-quality products and efficient services for domestic and foreign customers continually.





● 企业文化 >>>>>  
Enterprise Culture

◎ 核心价值观：

**世** 之律 德為本  
**商** 之道 信為先



◎ 服務理念：

检查质量无缺陷 顾客服务无抱怨

◎ 企業精神：

创新、务实、团结、高标准、专业化

◎ 企業使命：

立足中国 走向世界

◎ 企業愿景：

塑造最受客户尊敬和信赖的合作伙伴

● Core Values:

As Rules of World ,Morality is the First  
As Way of Business, Integrity is the Chief

● Service Concept:

No Defect During QUALITY INSPECTING,  
No Complaint During CUSTOMER SERVICE

● Our Spirit:

Innovation 、 Factuality、 Solidarity、 High Standard and Specialization.

● Our Mission:

Made in China,Go to World

● Our Vision:

To be the Most Respected and Trusted Partner All Over the World.

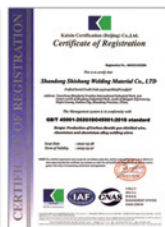






● 资质荣誉 >>>>>>  
Qualifications and honors

诚信 权威  
Honesty And Authority



● 生产设备 >>>>>  
Production Equipment

良好的品质源于先进的工艺技术、精良的生产设备及精湛的匠心人才。公司凭借国际领先的技术研发和应用能力、强大的产品制造和服务实力，配合严谨的生产工艺流程操控，确保产品质量高度稳定性及良好的安全性，备受客户青睐。

High quality comes from advanced technology, excellent production equipment and ingenious talents.

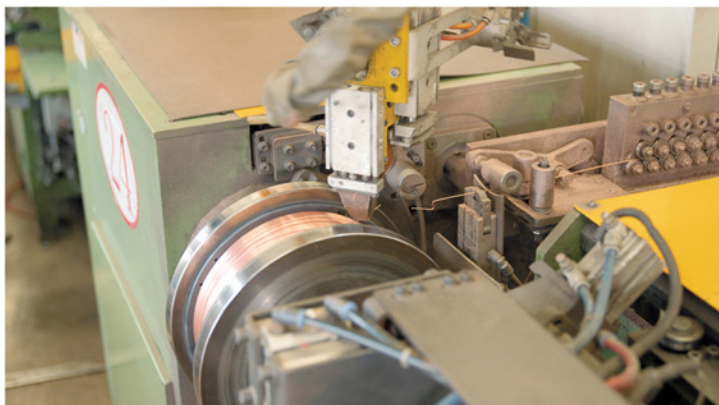
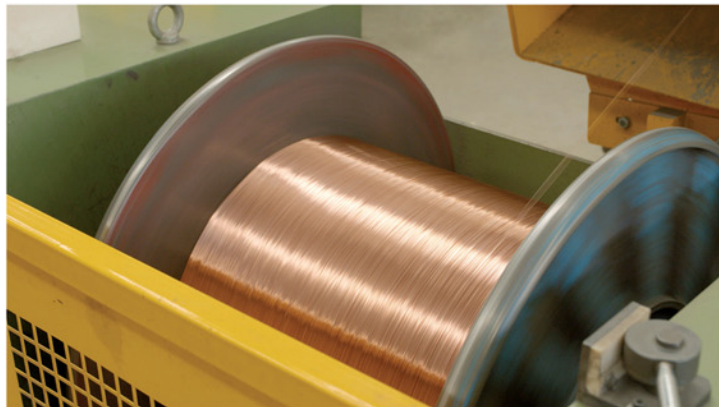
As for ensuring the products in high stability and good security, Based on the ability of international leading technology R&D and application, also the strength of product manufacturing and customer service, our company adhere to strict production process to meet the satisfaction of the customers.



精工 精品  
Precise processing Quality products



● 生产设备 >>>>>>  
Production Equipment



SZESHANG



● 科研设备 >>>>>

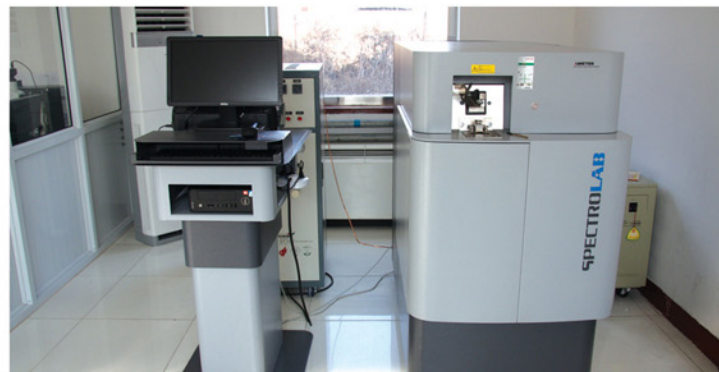
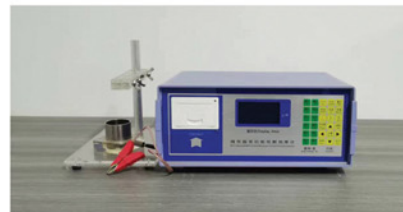
Scientific Research Equipment

以专业的技术为坚强后盾,以先进生产设备和严格的检测流程为生产高品质、高性能产品的重要保障。世商焊材从原材料采购、检验入库、试验生产、下达计划、产品生产、入库检测、热情销售、完美售后等方面,都有严格的把关系统!每个环节紧密相连,一处出错,后方系统都会很快检测,从而快速解决!

我司现有直读光谱仪、红外碳流分析仪、夏比“V”型缺口成像仪、探伤测试仪、洛氏硬度计、电弧燃烧炉等多种检测仪器,并最新引进德国制造火花原子发射分光仪,对焊丝各类元素所含成份进行测试,精准到焊丝生产的最高标准。

Taking professional technology as strong background, based on advanced production line and strictly testing process, confirming to produce high quality and high performance products. We SZESAHNG welding have very strictly controlling system from raw material procurement, warehousing inspection, testing production, release the production plan, production, warehouse-in inspection, enthusiastic sales and perfect after-sale service! All the segments are closely linked, once an error occurred in one segment, the follow-up systems would test timely and solve it.

We have testing instrument such as OES, Infrared carbon and sulfur analyzer, Charpy V-notch phaser, Flaw detector, Rockwell hardness tester, Thermostat and Arc furnace etc. We also introduced Spark atomic emission spectrometer which made in Germany for testing the composition of welding wire, it could be precised to the highest standard in welding wire production.





世商焊材

SZESHANG WELDING MATERIALS



● 主导产品 >>>>>

Scientific Research Equipment

■ 气体保护实芯焊丝  
GAS SHIELDED WELDING WIRE

■ 埋弧焊丝  
SUBMERGED ARC WELDING WIRE

■ 低合金钢气保焊丝  
LOW ALLOY STEEL WELDING WIRE

■ 铝及铝合金焊丝  
ALUMINIUM ALLOY WELDING WIRE

■ 药芯焊丝  
FLUX CORED WELDING WIRE

■ 不锈钢焊丝  
STAINLESS STEEL WELDING WIRE

■ 焊条  
WELDING ROD

严把质量关 倾心筑精品

Paying attention to quality control,  
dedicated to producing high-quality products



## 气体保护实芯焊丝— GAS SHIELDED WELDING WIRE



Model 品名	Welding Type 焊接法	AWS	BS EN ISO	Gas 保护气体	Mechanical properties 熔敷金属机械性能				Chemical Composition 熔敷金属化学成分 (%)							Application 主要用途		
					Yield Strength 屈服MPa	Tensile Strength 抗拉MPa	Elongation 伸长率 (%)	Impact Energy 冲击功J/C	C	Mn	Si	P	S	Cu	Ni		Cr	Ti
ER50-6	GTAW	ER70S-6	W3Si1	It	475	560	31	146/-30	0.06	1.5	0.6	0.015	0.012	0.06				490MPa级高张力钢用、钢管对接及角焊用 Suitable For 490Mpa High Tension Steel, Steel Pipe Docking and Fillet Welding
ER50-3	GTAW	ER70S-3	W2Si	It	450	570	28	126/-30	0.09	1.2	0.48	0.013	0.012					490MPa级高张力钢用、高速薄板焊接 Suitable For 490Mpa High Tension Steel, Sheet Welding under High Speed
ER50-G	GTAW	ER70S-G	W0	It	480	565	31	175/-30	0.08	1.35	0.57	0.011	0.009		适量 Appropriate			490MPa级高张力钢用、高速薄板焊接 Suitable For 490Mpa High Tension Steel, Sheet Welding under High Speed
ER49-1	GMAW		G4Si1		440	560	28	68/室温	0.06	1.71	0.6	0.015	0.012	0.06				490MPa级高张力钢用、全方位焊接 Suitable For 490Mpa High Tension Steel, All Position Welding
ER50-2	GMAW	ER70S-2	G2Ti		445	535	31	89/-30	0.06	1.05	0.45	0.012	0.009	0.08				490MPa级高张力钢用 Suitable For 490Mpa High Tension Steel
ER50-3	GMAW	ER70S-3	G2Si		430	535	33	65/-30	0.08	1.1	0.49	0.015	0.011					490MPa级高张力钢用、低电流 Suitable For 490Mpa High Tension Steel, Low Current
ER50-4	GMAW	ER70S-4	G3Si1		425	515	32	78/-30	0.09	1.06	0.67	0.014	0.012					490MPa级高张力钢用、较大电流 Suitable For 490Mpa High Tension Steel, High Current
ER50-6	GMAW	ER70S-6	G3Si1		450	550	30	97/-30	0.09	1.13	0.83	0.01	0.012					490MPa级高张力钢用、全方位焊接、较大电流 Suitable For 490Mpa High Tension Steel, All Position Welding, High Current
ER50-G	GMAW	ER70S-G	G0		470	560	31	96/-30	0.09	1.21	0.6	0.012	0.01		适量 Appropriate			490MPa级高张力钢用、全方位焊接、较大电流 Suitable For 490Mpa High Tension Steel, All Position Welding, High Current



## 埋弧焊丝— SUBMERGED ARC WELDING WIRE

Model 品名	AWS	BS EN	Mechanical properties 熔敷金属机械性能				Chemical Composition 熔敷金属化学成分 (%)											FLUX 配合焊剂
			Yield Strength 屈服MPa	Tensile Strength 抗拉MPa	Elongation 伸长率 (%)	Impact Energy 冲击功J/C	C	Si	Mn	P	S	Cr	Ni	Cu	Mo	Ti		
H08A	EL8/EL12	S1	390	500	27	48/-20	0.06	0.13	0.58	0.012	0.011	0.02	0.03	0.05				HJ431
H08MnA	EM12	S2	400	500	28	58/-20	0.06	0.1	1.27	0.013	0.009	0.02	0.03	0.05				SJ101
H10Mn2	EH14	S3	445	550	28	98/-40	0.11	0.08	1.85	0.013	0.009	0.02	0.03	0.06				SJ101
H10MnSi	EM13K	S2Si2	425	520	29	76/-20	0.09	0.65	1.05	0.013	0.011	0.02	0.02	0.06				SJ101
EM12K	EM12K		415	510	29	56/-20	0.07	0.25	1.14	0.016	0.015	0.03	0.02	0.05				SJ101
H10Mn2E	EH14		435	520	32	112/-20	0.07	0.31	1.32	0.01	0.008			0.12				SJ101
H08MnMoA	EA2、EA4		525	615	24	48/-20	0.09	0.24	0.98	0.014	0.008	0.03	0.08	0.09	0.4	0.1		SJ301
H08Mn2MoA	EA3		555	635	23	47/-20	0.07	0.26	1.75	0.01	0.009	0.03	0.05	0.1	0.56	0.12		SJ301



# SZESHANG



## 低合金钢气保焊丝- LOW ALLOY STEEL WELDING WIRE

Model 品名	AWS	Gas 保护气体	Mechanical properties 熔敷金属机械性能				Chemical Composition 熔敷金属化学成分 (%)														
			Yield Strength 屈服MPa	Tensile Strength 抗拉MPa	Elongation 伸长率 (%)	Impact Energy 冲击功J/C	C	Si	Mn	P	S	Cr	Ni	Cu	Mo	Ti					
ER55-B2-Mn	ER80S-G	M21	530	620	25	75/室温 Room-Temperature	0.07	0.65	1.45	0.014	0.011	1.05	0.01	0.08	0.45						
ER60-G	ER90S-G	M21	550	635	23	64/-40	0.09	0.45	1.65	0.014	0.01			0.09	0.25	0.01					
ER70-G	ER100S-G	M21	655	740	20	85/-20	0.1	0.62	1.53	0.016	0.014		1.03	0.09	0.28	0.11					
ER76-G	ER110S-G	M21	685	775	19	89/-40	0.08	0.48	1.38	0.013	0.01		1.98	0.08	0.35						
ER80-G	ER120S-G	M21	745	835	19	85/-30	0.09	0.58	1.6	0.015	0.02	0.4	1.65	0.09	0.4						





## 铝及铝合金焊丝1- ALUMINIUM ALLOY WELDING WIRE

Model 品名	Standard 标准	Gas 保护气体	Mechanical properties 熔敷金属机械性能			Chemical Composition 熔敷金属化学成分 (%)								Application 用途
			Yield Strength 屈服MPa	Tensile Strength 抗拉MPa	Elongation 伸长率 (%)	Si	Fe	Cu	Mn	Be	Mg	Ti	Zn	
ER1070	GB/T 10858-2008 AWS A5.10	Ar/He/Ar-He	20	65	18	<0.20	<0.25	<0.04	<0.03	/	<0.03	<0.03	<0.04	推荐用于焊接1000系列铝合金。应用于铁路机车、电力、化学、食品等行业 Recommended Type:Aluminium Alloy 1000 series. Engine,Electric Power,Chemistry,Food,etc.
ER1100	GB/T 10858-2008 AWS A5.10	Ar/He/Ar-He	25	80	25	<0.20	<0.25	<0.2	<0.05	<0.03	/	/	<0.11	推荐用于焊接1000系列铝合金。应用于铁路机车、电力、化学、食品等行业 Recommended Type:Aluminium Alloy 1000 series. Engine,Electric Power,Chemistry,Food,etc.
ER2319	GB/T 10858-2008 AWS A5.10	Ar/He/Ar-He	180	240	17	<0.20	<0.30	<6.8	<0.4	<0.0003	<0.02	<0.2	<0.10	推荐用于焊接2219等同等级的铝合金材料。应用于核工业、舰船制造、航空航天工业、军工装备等行业 Recommended Type:Aluminium Alloy 2219 series. Nuclear Industry,Ship-building,Boiler,Space Industry,etc.
ER4043	GB/T 10858-2008 AWS A5.11	Ar/He/Ar-He	40	120	8	<5.5	<0.80	<0.30	<0.05	<0.0003	<0.05	<0.20	<0.10	推荐用于铸铝合金焊接。应用于船舶、机车、化工、食品、运动器材、模具、家具、容器、集装箱等行业 Recommended Type:Casted Aluminium Alloy Series. Ships, Engine, Chemistry, Food, Sports Equipment, Mould, Furniture, Vessel, Container, etc.
ER4047	GB/T 10858-2008 AWS A5.11	Ar/He/Ar-He	60	130	5	<13	<0.60	<0.30	<0.15	<0.0003	<0.10	<0.15	<0.20	推荐用于焊接各种铸造及挤压成型铝合金。应用于焊接或堆焊轻质合金加工业 Recommended Type:Casted and Extruded Aluminium Alloy Series
ER5356	GB/T 10858-2008 AWS A5.11	Ar/He/Ar-He	110	240	17	<0.25	<0.4	<0.1	<0.2	<0.0003	<5.5	<0.20	<0.10	推荐用于焊接或堆焊5%镁的铸铝合金。应用于自行车、铝滑板车等运动器材、机车车厢、化工压力容器、兵工生产、造船、航空等 Bicycles,Aluminium Scooter, Engine carriage,Pressure Vessel,Army Processing,Ship-Building,Space Shuttle etc.
ER5183	GB/T 10858-2008 AWS A5.11	Ar/He/Ar-He	125	275	17	<0.40	<0.40	<0.10	<0.15	<0.0003	<5.2	<0.15	<0.20	推荐用于焊接或堆焊4.5%镁级别的铸铝合金。应用于化工压力容器、核工业、造船、制冷行业、锅炉、航空航天工业等 Pressure Vessel Nuclear Industry,Ship-building,Boiler.Space Industry,etc.
ER5556	GB/T 10858-2008 AWS A5.11	Ar/He/Ar-He	125	275	17	<0.25	<0.40	<0.10	<0.15	<0.0003	<5.5	<0.15	<0.20	推荐用于对接焊接接头强度要求较高的铸铝合金。广泛用于铁路机车、电力、化学、食品等行业 Engine,Electric Power,Chemistry and Food etc.







## 由母材组合选择焊丝— CHOOSE THE WELDING WIRE ACCORDING TO THE BASE METAL

Base metal 母材	7003	6061 6063 6101	5086 5083 5056	5154 5454	5052	5005	2219	2014 2017	3004	1200	1100 3003	1070 1050
1070 1050	5356 (2)(4)(5)	4043 (5)(7)	5356 (2)	5356 (2)(4)(5)	4043 (2)(5)	1100 (1)(4)(5)	4145 (4)(5)	4145	4043 (2)(5)	1200 (1)(4)(5)	1100 (1)(4)(5)	1070 (1)(4)(5)
1100 3003	5356 (2)(4)(5)	4043 (5)(7)	5356 (2)	5356 (2)(4)(5)	4043 (2)(5)	1100 (1)(4)(5)	4145 (4)(5)	4145	4043 (2)(5)	1200 (1)(4)(5)	1100 (1)(4)(5)	
1200	5356 (2)(4)(5)	4043 (5)(7)	5356 (2)	5356 (2)(4)(5)	4043 (2)(5)	1100 (1)(4)(5)	4145 (4)(5)	4145	1200 (1)(4)	1200 (1)(4)(5)		
3004	5356 (2)(4)	4043 (2)(3)(5)(7)	5356 (2)	5356 (2)(3)	5356 (2)(3)(4)(5)	5356 (2)(3)(4)	4145 (4)(5)	4145	5356 (2)(3)(4)			
2014 2017		4145				4145	4145 (8)	4145 (8)				
2219	4043 (5)	4043 (5)(6)		4043 (5)	4043 (5)	4043 (5)(6)	2319 (4)(5)(6)					
5005	5356 (2)(3)	4043 (2)(3)(5)(7)	5356 (2)	5356 (2)(3)	5356 (2)(3)(4)(5)	5356 (2)(3)(4)(5)						
5052	5356 (2)(3)	4043 (2)(3)(5)(7)	5356 (2)	5356 (2)(3)	5356 (2)(3)(4)							
5154	5356 (2)(3)	5356 (2)(3)(4)	5356 (2)(3)	5356 (2)(3)								
5086 5083	5356 (2)	5356 (2)	5356 (2)									
6061 6063	5356 (2)(3)(4)(5)	4043 (2)(3)(5)										
7003	5356 (2)											

### 说明 Remark

- (1) 也可用1100或1200  
(1) can adopt 1100 or 1200
- (2) 也可用5356, 5556, 或5183  
(2) can adopt 5356, 5556 or 5183
- (3) 也可用5654或5554  
(3) can adopt 5654 or 5554
- (4) 根据用途可用4043  
(4) according to usage can adopt 4043
- (5) 也可用4047  
(5) can adopt 4047
- (6) 也可用4145  
(6) can adopt 4145
- (7) 阳极化处理产生色差时可用5356  
(7) adopt 5356 when appears chromatic aberration after anodic process
- (8) 也可用2319  
(8) can adopt 2319





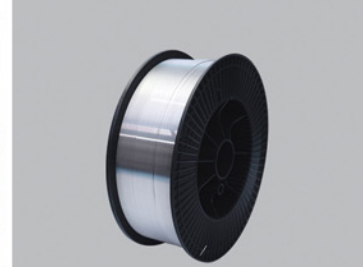
## 药芯焊丝- FLUX CORED WELDING WIRE

GB	AWS	Gas 保护气体	Mechanical properties 熔敷金属机械性能				Chemical Composition 熔敷金属化学成分 (%)										
			Yield Strength 屈服MPa	Tensile Strength 抗拉MPa	Elongation 伸长率 (%)	Impact Energy 冲击功J/C	C	Si	Mn	P	S	Cr	Ni	Mo	Cu		
E500T-1	E70T-1	C1	470	550	26	80(-20)	0.05	0.4	1.3	0.015	0.012						
E501T-1	E71T-1C	C1	480	560	27	100(-20)	0.05	0.45	1.35	0.012	0.01						
E501T-1M	E71T-1M	M21	480	560	27	100(-20)	0.05	0.45	1.38	0.014	0.008						
E501T-1L	E71T-1J	C1	500	580	28	100(-40)	0.05	0.48	1.4	0.02	0.007		0.4				
E500T-1	E70T-1	C1	500	580	26	90(-20)	0.05	0.48	1.4	0.02	0.007		0.4				
E750T1-K3	E110T1-K3	C1	760	830	18	80(-20)	0.04	0.34	1.6	0.02	0.01	0.05	2.11	0.55			
E501T-8	E71T-8		440	520	25	70(-30)	0.06	0.24	0.6	0.012	0.009		0.25				
E501T-11	E71T-11		440	550	24		0.08	0.14	0.6	0.012	0.009		0.15				
E501T-GS	E71T-GS			560			0.07	0.18	0.6	0.012	0.009		0.15				
E551T1-N11	E81T1-N11	C1	540	625	25	80(-30)	0.04	0.5	1.36	0.011	0.008		1	0.02			
E551T1-N12	E81T1-N12	C1	560	640	24	80(-40)	0.05	0.4	1.05	0.015	0.01		2.25				
E308LT1-1	E308LT1-1	C1		565	42		0.03	0.42	1.4	0.02	0.005	20.05	9.98				
E309LT1-1	E309LT1-1	C1		500	27		0.03	0.45	1.56	0.022	0.008	24.5	12.85				
E316LT1-1	E316LT1-1	C1		500	27		0.03	0.4	1.45	0.025	0.01	18.56	12.75	2.28			
E2209LT1-1	E2209LT1-1	C1		500	27		0.03	0.8	1.21	0.02	0.01	21.6	8.8	2.9			





## 不锈钢焊丝— STAINLESS STEEL WELDING WIRE



AWS	Mechanical properties 熔敷金属机械性能		Chemical Composition 熔敷金属化学成分 (%)							Others 其他
	Tensile Strength 抗拉MPa	Elongation 伸长率 (%)	C	Si	P	Cu	Cu	Cu	Cu	
ER304	580	43	0.04	0.51	1.27	18.3	0.4	0.03	0.01	
ER307	600	42	0.083	0.45	4.52	20.21	9.38	0.03	1.02	
ER307LSi	605	41	0.074	0.72	6.79	18.83	8.23	0.02	0.08	
ER308	590	41	0.039	0.35	1.75	20.12	9.47	0.03	0.01	
ER308L	550	42	0.025	0.43	1.63	20.05	10.2	0.02	0.02	
ER308LSi	560	41	0.024	0.75	1.98	20.7	10.2	0.05	0.02	
ER309	610	40	0.078	0.42	1.66	24.25	13.1	0.04	0.02	
ER309L	570	42	0.026	0.36	1.76	23.65	12.85	0.03	0.01	
ER309LSi	580	39	0.024	0.73	2.05	23.94	13.83	0.04	0.02	
ER310	605	41	0.088	0.4	2.03	27.41	21.75	0.05	0.02	
ER316	580	39	0.049	0.37	1.75	19.01	12.73	0.04	2.48	
ER316L	560	40	0.023	0.39	1.93	19.32	12.42	0.06	2.57	
ER316LSi	570	38	0.024	0.73	1.61	18.72	11.54	0.07	2.31	
H0Cr18Ni9Ti	575	40	0.053	0.63	1.78	17.57	9.43	/	/	Ti 0.54
ER321	590	40	0.062	0.42	1.49	19.22	9.78	0.08	0.01	Ti 0.77
ER347	580	41	0.04	0.41	1.62	20.36	9.91	0.07	0.02	Nb 0.65
ER410	535	25	0.1	0.45	0.42	11.83	0.19	/	/	/
ER430	470	36	0.039	0.39	0.46	16.33	0.21	/	/	/
ER2209	720	25	0.027	0.65	1.56	22.4	8.35	0.05	2.87	N 0.12



## 焊条—WELDING ROD



Model 品名	GB	AWS	Mechanical properties 熔敷金属机械性能				Chemical Composition 熔敷金属化学成分 (%)												
			Yield Strength 屈服MPa	Tensile Strength 抗拉MPa	Elongation 伸长率 (%)	Impact Energy 冲击功J/C	C	Si	Mn	P	S	Cr	Ni	Mo	V	其他 Others			
J421	E4313	E6013	385	485	31	/	0.07	0.23	0.42	0.026	0.018								
J422	E4303	D4303	390	485	31	92(0)	0.07	0.19	0.36	0.027	0.018								
J427	E4315		440	525	29	160(-30)	0.07	0.43	0.85	0.018	0.009	0.03	0.02	0.02	0.02				
J502	E5003	D5003	455	545	30	77(0)	0.08	0.23	0.56	0.026	0.017								
J506	E5016	E7016	440	550	31	170(-30)	0.07	0.31	1.25	0.014	0.01	0.04	0.01				0.01		
J507	E5015	E7015	475	590	24	110(-30)	0.06	0.18	1.4	0.009	0.003	0.12	0.03	0.01					
J508	E5018	E7018	455	550	30	127(-30)	0.07	0.39	1.37	0.012	0.01	0.01	0.03						
J502WCu	E5003-G		440	540	27	55(-20)	0.07	0.23	0.67	0.023	0.019							Cu0.28	W0.26
J506NiCrCu	E5016-G		445	550	26	98(-40)	0.06	0.37	0.85	0.017	0.011	0.54	0.4						Cu0.31
J507Ni	E5015-G	E7015-G	450	550	29	95(-30)	0.08		1.4	0.018	0.015		0.4						
J508Ni	E5018-G	E7018-G	470	575	28	95(-40)	0.06	0.45	1.29	0.012	0.008		0.95						
J556NiCrCu	E5516-G		495	615	29	98(-40)	0.06	0.38	1.45	0.015	0.012	0.69	0.39						Cu0.28
J557	E5515-G	E8015-G	470	560	26	88(-40)	0.06	0.39	1.33	0.02	0.012								
J606	E6016-D1	E9016-G	585	660	29	85(0)	0.07	0.45	1.55	0.016	0.009				0.35				
J607	E6015-D1	E9015-G	555	680	22	87(0)	0.08	0.49	1.52	0.017	0.009				0.31				
J757	E7515-G	E11015-G	690	785	19	102(常温)	0.07	0.42	1.86	0.017	0.011				0.48				
J857	E8515-G	E12015-G	800	905	20	81(常温)	0.06	0.36	1.78	0.014	0.01				0.68				
J857Cr	E8515-G	E12015-G	810	925	22	89(常温)	0.07	0.35	1.82	0.013	0.008	1			0.66	0.6			
J107Cr	E1015-G		970	1085	16		0.08	0.43	1.74	0.015	0.012	1.86			0.63	0.13			
J501Fe16	E5024	E7024	455	570	25	89 (0)	0.07	0.76	0.99	0.025	0.018								
J421Fe16	E4324		405	485	23	90 (0)	0.06	0.3	0.45	0.029	0.02								

