



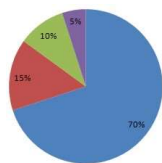
KOČEVAR[®]
Widerstandsschweißen | Resistance welding

Company Presentation



We help **you** weld your product.

Company info



■ European union
■ Russia and Asia
■ Slovenia
■ Other

- Established in 1969
- Build on a heritage of 45+ years of experience in resistance welding
- Headquarters: Locica, Slovenia
- Net sales of 1,6 million € in 2007

- Key focus areas:
 - Automotive
 - Railway
 - Professional kitchen equipment
 - Sheet metal industry

- Market:
 - European union, 70%
 - Russia and Asia, 15%
 - Slovenia, 10%
 - Other, 5%

- Key focus development: Spot, projection, robot guns, seam, butt, flash-butt, condensor discharge, serial spot resistance welding.

www.kocevar.eu | T: +386 (0)3 570 14 47 | F: +386 (0)3 570 14 46 | E: info@kocevar.eu

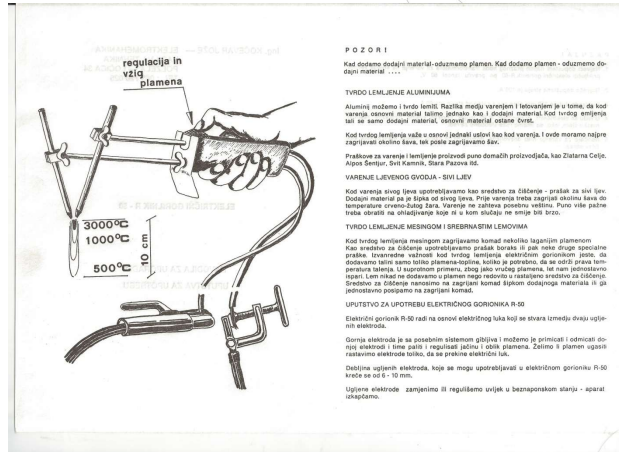


We help **you** weld your product.

Small company... With long History

Our first serial produced product from 1969

1969



www.kocevar.eu



We help **you** weld your product.

Small company... With long History

Product line from 1981

1981

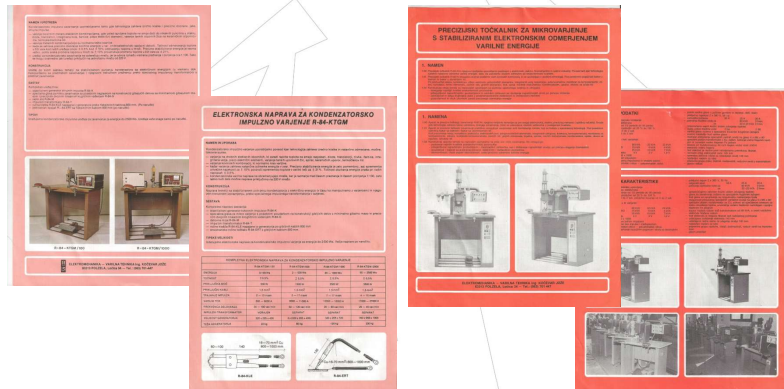


www.kocevar.eu



Small company... With long History

Brochures from 1981



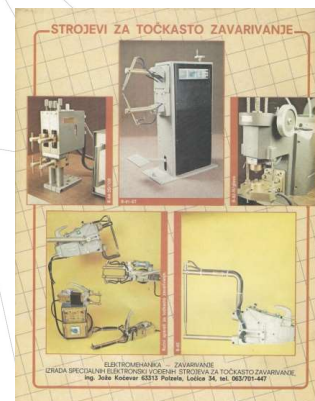
www.kocevar.eu



Small company... With long History

Commercial in magazine "SAM" from 1982

1987



www.kocevar.eu



We help **you** weld your product.

1988

Small company... With long History

Demonstration of a industrial welding Gun at the "Zagrebski Velesajam" exhibition in 1985



www.kocevar.eu



We help **you** weld your product.

Certificated: ISO 9001:2008 Company



www.kocevar.eu



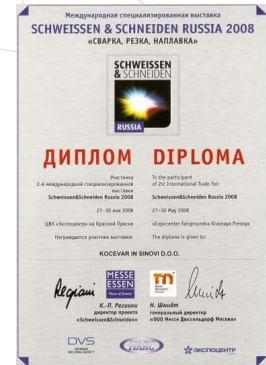
Exhibiting annually on the following trade fairs



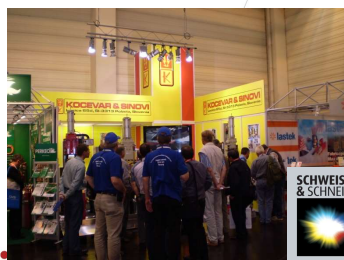
The World's No.1



INTERNATIONAL
TRADE FAIR
JOINING CUTTING
SURFACING
12.-15.05.2009
MOSCOW



Exhibiting annually on the following trade fairs



ar.eu



We help **you** weld your product.

Exhibiting annually on the following trade fairs



www.kocevar.eu



We help **you** weld your product.

Customer base:



And many more...

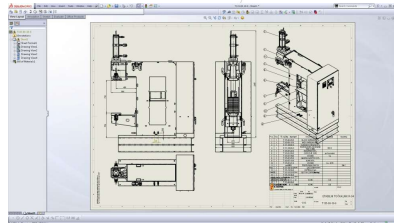
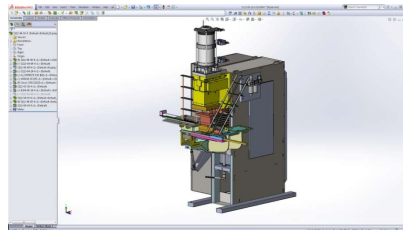
www.kocevar.eu



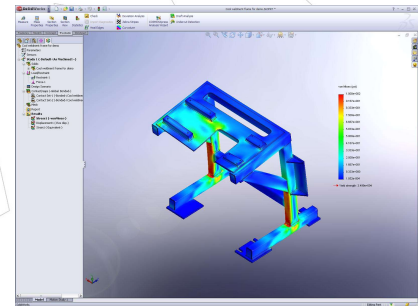
We help **you** weld your product.



Key Software that we use:



SolidWORKS Simulation

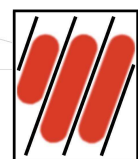
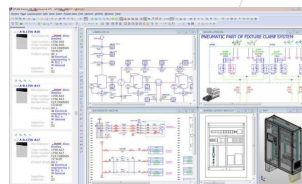
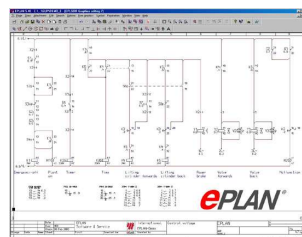


www.kocevar.eu



We help **you** weld your product.

Key Software that we use:



ePLAN



www.kocevar.eu



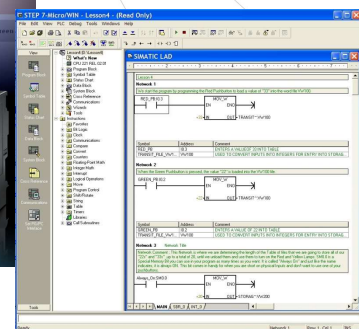
Key Software that we use:

SIEMENS Simatic



SIEMENS

STEP 7 Professional



www.kocevar.eu

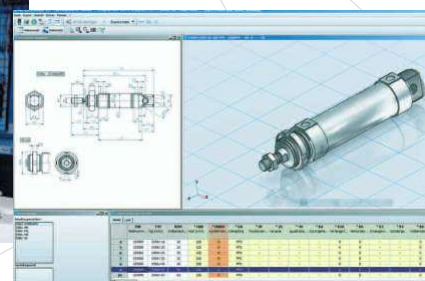


Key Software that we use:

FESTO FluidDRAW



FESTO
PNEUMATICS



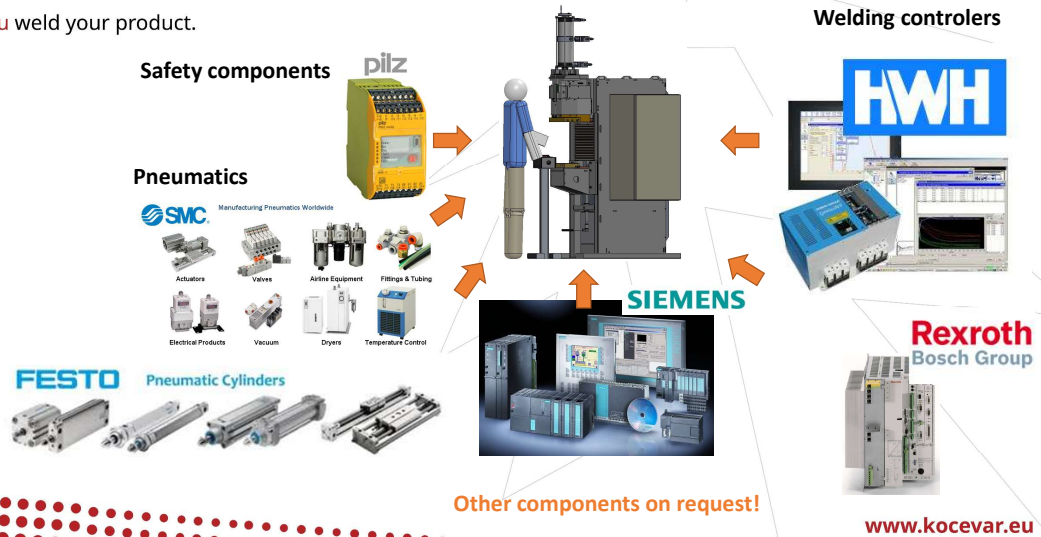
www.kocevar.eu



KOČEVAR®

Integrated components in our machines:

We help **you** weld your product.

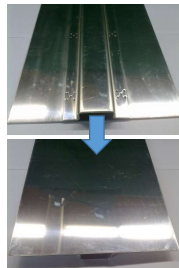


KOČEVAR®

What do we produce:

We help **you** weld your product.

Invisible resistance welding



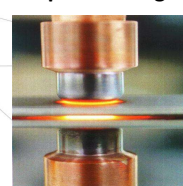
Projection welding



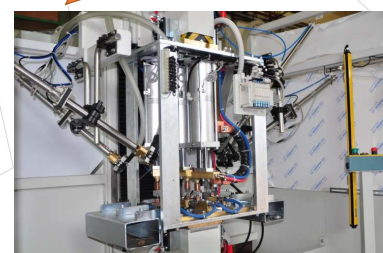
Welding Jigs



Spot welding



Welding Automation



KOČEVAR®

Seam welding



www.kocevar.eu



KOČEVAR®

We help **you** weld your product.

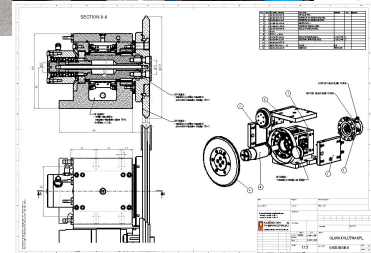
What do we produce:

Seam welding HEADS



NO Mercury inside!

**5 years warranty
at 24/7 operation**



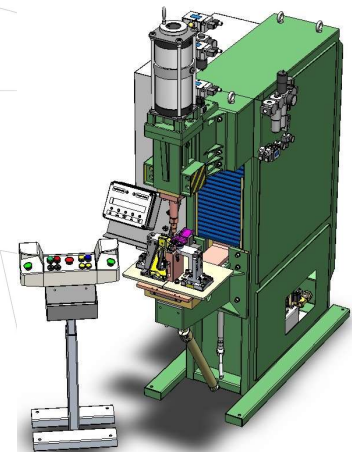
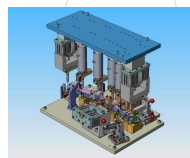
KOČEVAR®

We help **you** weld your product.

Small company... Big on Innovation

**Projection welding machine is based
on standard welding machine
type R-94-160/250-MI-DD200**

- transformer - 160 kVA; X=50%,
- pneumatic cylinder diameter Ø200mm
- welding controller BOSCH PST625EW+BT6
- PLC – Siemens Simatic S7-200
- lower welding table adjustable to height
- throat depth according to requirement of the tool
- Poka-yoke welding Jig



Made for **DURA**
Automotive Systems

designed
with
SolidWorks

www.kocevar.eu

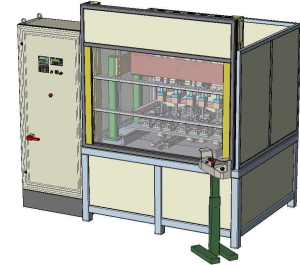


We help **you** weld your product.

Small company... Big on Innovation

Custom projection multidimple welding machine

- transformers - 40 kVA; X=50%,
- pneumatic cylinders, diameter Ø80mm
- welding controller BOSCH PST625EW + BT6
- PLC – Siemens Simatic S7-200
- Poka-yoke welding Jig



Made for



www.kocevar.eu



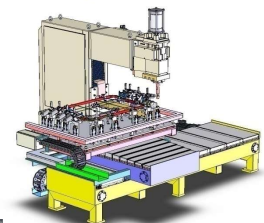
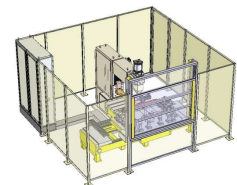
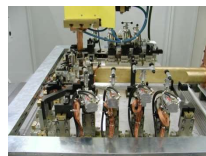
We help **you** weld your product.

Small company... Big on Innovation

Projection welding machine is based on standard welding machine type **R-94-320/1000-MI-DD200**

and **Servo driven XY table** with Poka-yoke welding Jig

- transformer - 320 kVA; X=50%,
- pneumatic cylinder, diameter Ø125mm
- welding controller BOSCH PST625EW + BT6 panel
- PLC – Siemens Simatic S7-300



Made for



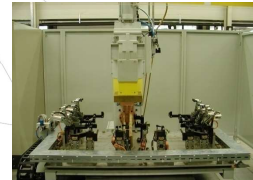
www.kocevar.eu



We help **you** weld your product.

Small company... Big on Inovation

Made for



www.kocevar.eu

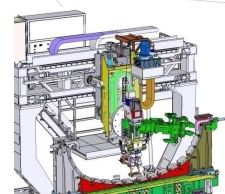
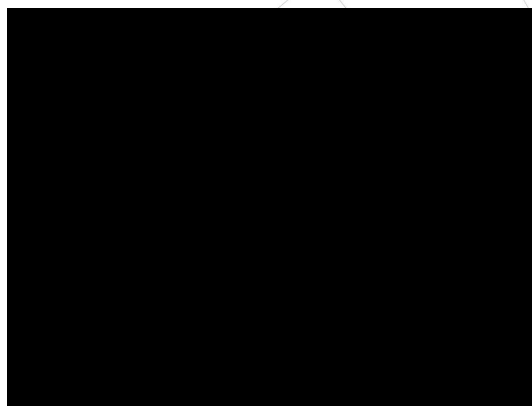


We help **you** weld your product.

Small company... Big on Inovation

Made for

igm



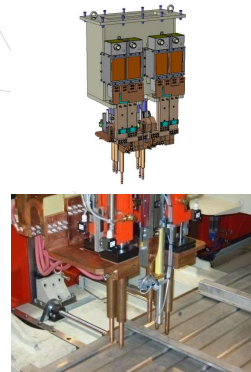
www.kocevar.eu



We help **you** weld your product.

Small company... Big on Innovation

Made for **igm**



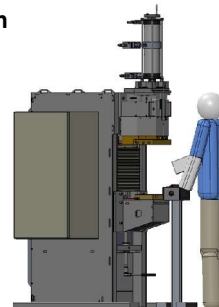
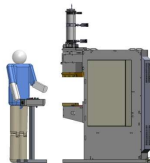
www.kocevar.eu



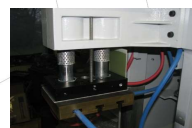
We help **you** weld your product.

Small company... Big on Innovation

Made for **KIRCHHOFF**
AUTOMOTIVE



October-December 2011



www.kocevar.eu



We help **you** weld your product.

Small company... Big on Inovation

Made for **igm**

World largest spot welding C-Gun



www.kocevar.eu

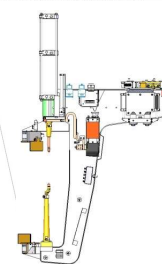
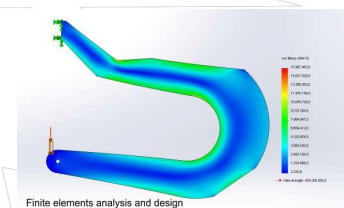
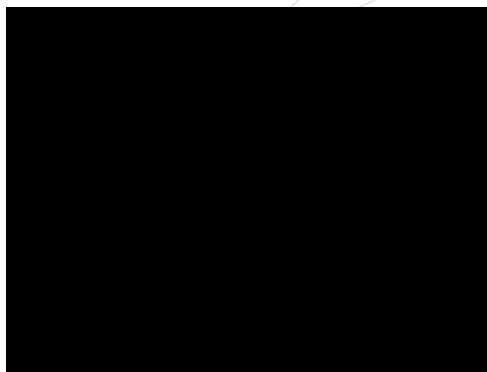


We help **you** weld your product.

Small company... Big on Inovation

Made for **igm**

World largest spot welding C-Gun



designed
with
DS
SolidWorks

www.kocevar.eu

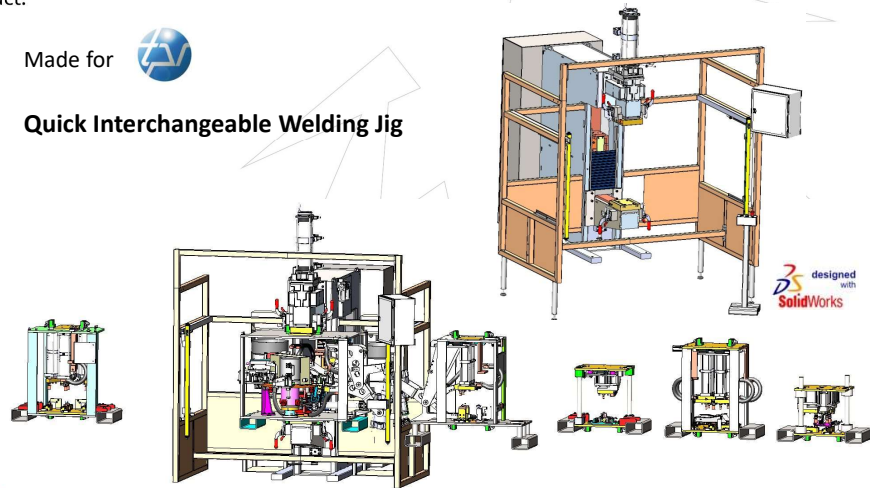
KOČEVAR® Small company... Big on Innovation

We help **you** weld your product.

Made for



Quick Interchangeable Welding Jig



designed
with
SolidWorks

www.kocevar.eu

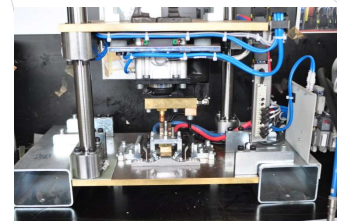
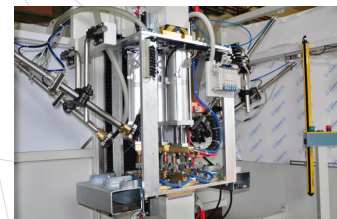
KOČEVAR® Small company... Big on Innovation

We help **you** weld your product.

Made for



Quick Interchangeable Welding Jig



designed
with
SolidWorks

www.kocevar.eu

**We're passionate about the future
and look forward to
work with **you!****

www.kocevar.eu