


An aerial photograph of a wind farm. In the foreground, the nacelle and part of a blade of a white wind turbine are visible, extending from the right side of the frame. The background shows a vast landscape of rolling green hills and fields, dotted with numerous other wind turbines stretching towards the horizon under a clear blue sky with light clouds.

# Wherever Wind Is

**ENABL**  
Part of Eltronic Group



## Partner of Choice

Cost-efficient engineered solutions  
wherever wind is



## Global Partner & Service

Our global presence means  
the world to you

## 360 Solutions Provider

Consulting, Equipment and Service



## State-of-the-art Solutions

Our wind industry expertise and dedication are your benefit



# Who We Are

ENABL is your global partner for consultancy and engineering solutions across the entire life cycle of onshore and offshore wind turbines. We specialize in developing production equipment and provide engineering services, consulting, and service on a global scale.

**+22**

**Years of experience**

**+730**

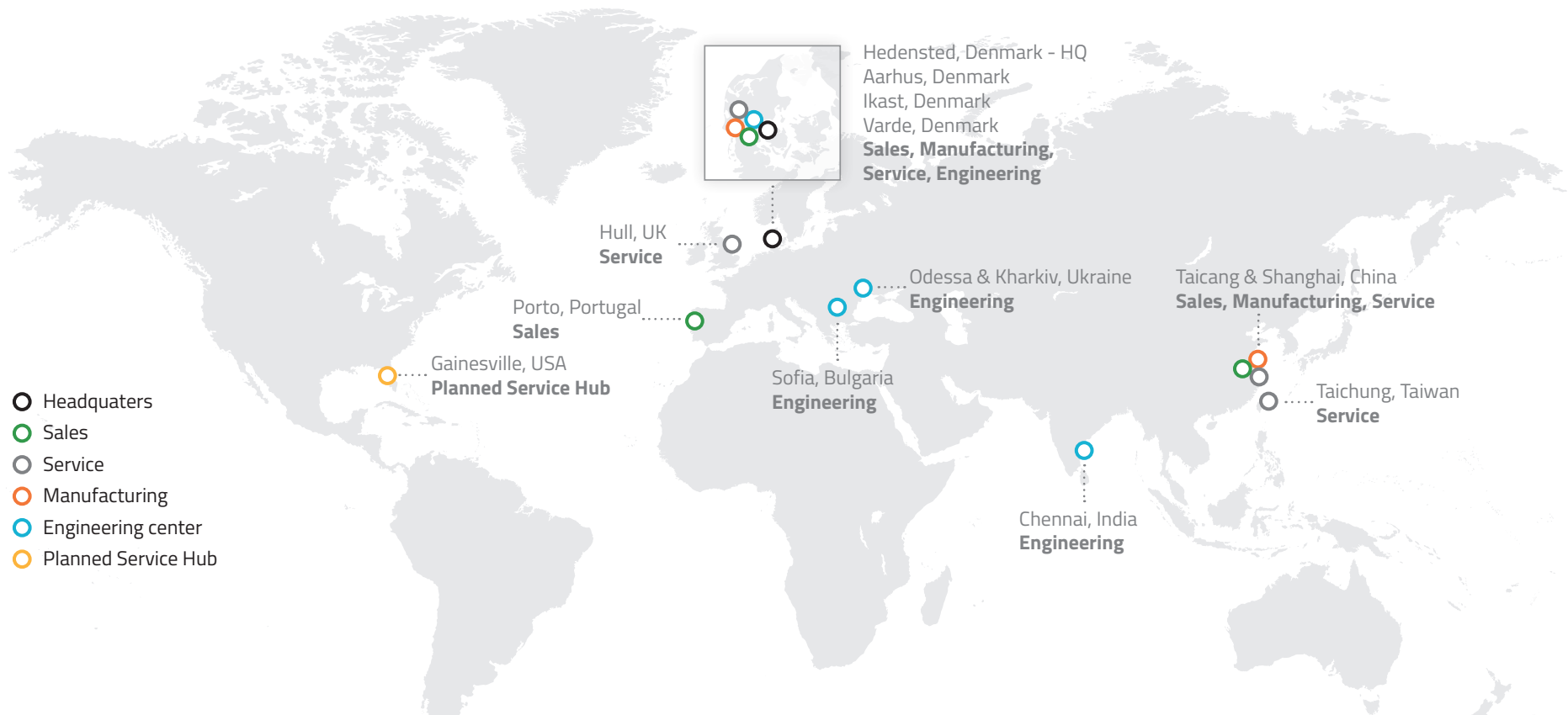
**Employees**

**+10,000**

**Global projects**

**+13**

**Locations**





Explore our  
brand movie





### **Our Vision**

A world powered by 100% renewables




### **Our Mission**

To form long-lasting partnerships that reduce the Levelized Cost of Energy



### **Our Purpose**

We want to be the partner of choice,  
ENABLing the green transition



*"At ENABL, we have the wind industry expertise and the international scale to meet your demands.*

*With our know-how and state-of-the-art solutions for the present and the next generation of wind turbines, we empower you to reach a stronger position in the market."*

**Søren Kvorning, CEO**

# Our Values



## Responsibility

### **We take responsibility for guiding our partner companies**

We offer advice with integrity and a desire that together, we will achieve the best possible result. Fair play, ethics and loyalty have top priority between us, our partner companies and the customers they serve.



## Quality

### **We enable top quality to compete on a global scale**

We use our experience to help our partner companies take projects from initial ideas to quality results. This is enabled through highly structured, transparent and traceable processes.



## Persistence

### **We persist until we achieve**

We show persistence when we work with our partner companies. We know that this is a vital trait to ensure the success of our partnerships. A job is only finished when it is tested, documented and delivered.



## Innovation

### **We believe in the power of innovative ideas**

ENABL encourages the spirit of innovation in all our partner companies. It is this innovation and thinking differently that affects change in the engineering industry and the world at large.



## Alliances

### **Building strong, mutually beneficial alliances is the key to success**

We aim to build up close alliances with our partner companies and enable them to build strong bonds with their customers. Only through learning processes and partner relationships can the optimal solution be obtained.





**ENABL CHINA**

Operation and Service in Shanghai  
Test & Assembly facilities in Taicang

# Our Employees

ENABL's +730 employees are located around the world in China, US, UK, Taiwan, India, Bulgaria, Ukraine, Portugal, and Denmark. Our global set-up includes dedicated engineers, technical experts, specialists, and administrative staff with years of experience in the wind industry wherever needed.

## Your global partner

We value our partnerships and the wind industry's needs for development and new technology. With unique know-how built over decades, we provide engineered solutions that solve your challenges. ENABL's equipment is site-tested and the feedback we retrieve is used to constantly improve our products. Enter a partnership with ENABL and reach a stronger position in the market.

## Our wind industry expertise is your benefit

ENABL develops high-end engineered solutions for the future of the wind turbine industry to optimize your business. Our employees are involved globally in large projects with state-of-the-art equipment and technology.

## Cost-competitive engineering

Our consultants provide expert knowledge across our locations in India, Bulgaria, Denmark, and Ukraine where we are able to deliver cost-competitive engineering solutions for your business.



*"We collaborate with you.  
We involve you in all stages of  
the project to truly understand  
the scope of the project and  
solve your challenges."*

**Mads Bygballe**, Lead Engineer



# ENABLing the green transition

ENABL is your global partner for consultancy and solutions across the entire lifecycle of onshore and offshore wind turbines.

With more than 22 years of specialist engineering know-how, we deliver what the wind energy industry demands.

Our offering includes Consulting, Equipment, and Service. We specialize in production, installation, transportation, testing and service equipment for towers and monopiles, blades and nacelles.

## Tower/monopile production

- Multi seam welding station
- Column & booms
- Fit-up systems
- Rotators
- Internal transport
- Lifting equipment
- Solutions for optimization
- Customized solutions
- Factory layout
- Service

## Nacelle production

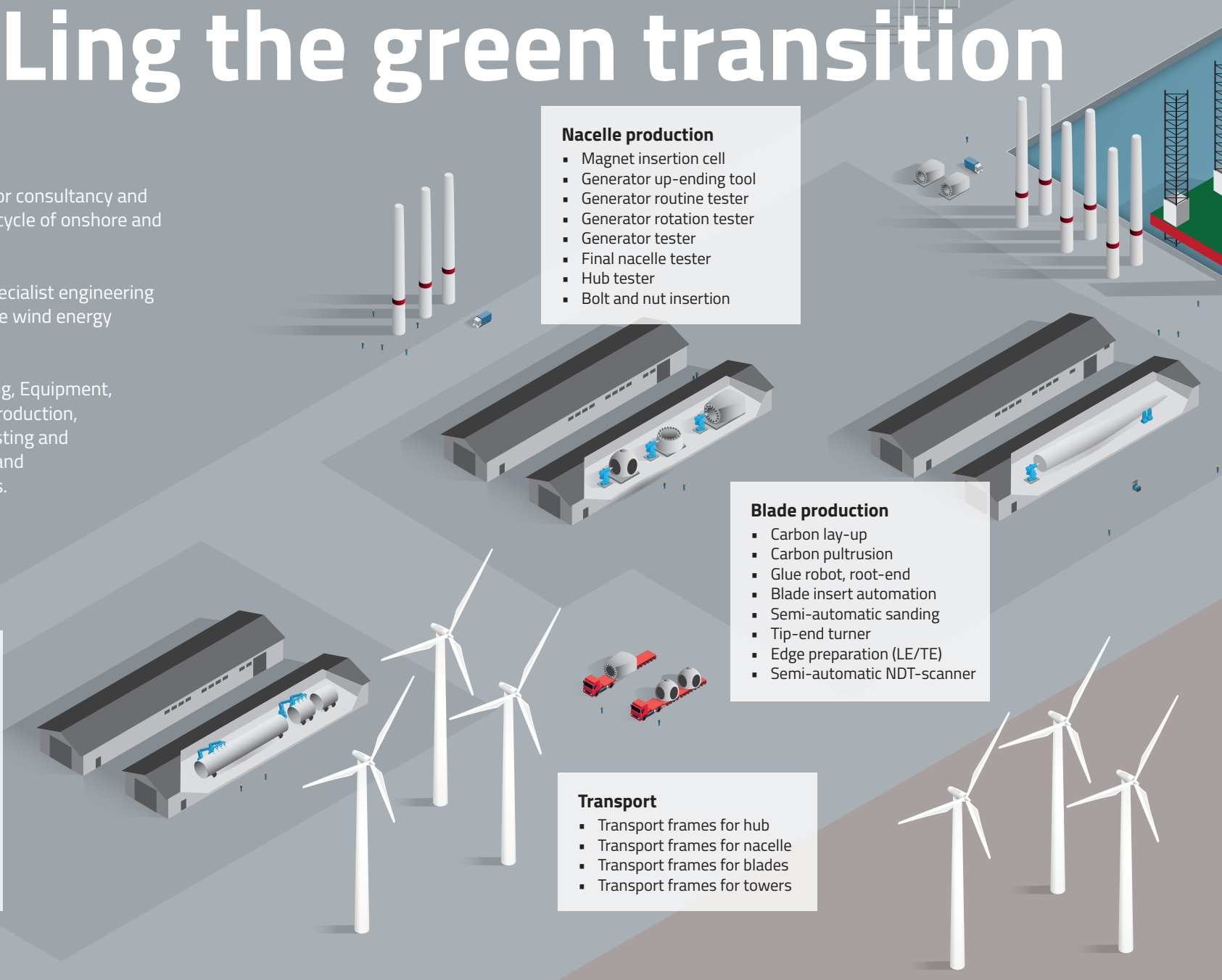
- Magnet insertion cell
- Generator up-ending tool
- Generator routine tester
- Generator rotation tester
- Generator tester
- Final nacelle tester
- Hub tester
- Bolt and nut insertion

## Blade production

- Carbon lay-up
- Carbon pultrusion
- Glue robot, root-end
- Blade insert automation
- Semi-automatic sanding
- Tip-end turner
- Edge preparation (LE/TE)
- Semi-automatic NDT-scanner

## Transport

- Transport frames for hub
- Transport frames for nacelle
- Transport frames for blades
- Transport frames for towers





### Outsourcing

- Supplier Partnership
- Full Value Chain

### Engineering Services

- Project managers
- Mechanical engineers
- Electrical engineers
- Software and grid specialists
- Process engineers
- Technical writing
- QHSE managers

### Quay

- Long tower Pre-com Unit
- Short tower Pre-com Unit
- Nacelle Pre-com Unit
- Extended TP
- Cooling Test Unit
- Tower upending tool

### Onshore installation

- Lifting yoke blades
- Lifting yoke nacelle
- Spreader beams
- Tagline systems
- Blade clamps
- Rotor stand
- Tower upending tool
- Blade turning yokes
- Wireless camera solutions for installation
- Tower guiding system
- Storage frames
- Universal tower lifting system

### Service & Support

- Product service & support
- Mobilization/demobilization of equipment
- 24/7 remote/on site support
- Downtime analysis
- Performance analysis
- Equipment rental
- Equipment storage or relocation
- Training & education
- Site Solutions

### Offshore installation

- Lifting yoke blades
- Lifting yoke nacelle
- Spreader beams
- Tagline systems
- Tower Gripper
- Blade racks
- Nacelle transport frames
- Tower storage frames
- Wireless camera solutions for installation
- Lift from floating barge

# References

## CS Wind Reaches the Desired Capacity on New Factory

*"ENABL's solutions resolved our challenges. The Multi Seam Welding Station with 3 welding heads helped us achieve our desired welding capacity in limited space. The column & booms are easy to operate, even for inexperienced operators. The operators trust the equipment and can concentrate on the product quality."*

**Mr. Park**, Head of CS Wind

## Nordex Group tests significantly cost-reduction on the sanding of blades

*"We completed two tests of the Semi-Automatic Sander with Blade Cleaner, and the results were very satisfying. The sanding and cleaning processes in our blade production demand many man-hours. That's why we need to improve and replace manual processes. With the SAS with Blade Cleaner, one operator can do both processes, hence the business case is good."*

**Jehanzeb Khan**, Senior Process Engineer at Nordex Group



Read our  
case stories



# Consulting

At ENABL, we focus on the core of your business. We have a global set-up with +350 consultants located in India, Bulgaria, Ukraine, and Denmark, working together as one unit.

## Engineering Services

Have you ever considered using consultants in your business? Make use of the opportunity to scale your business with specific competences by utilizing ENABL consultants on site and/or as back-office.

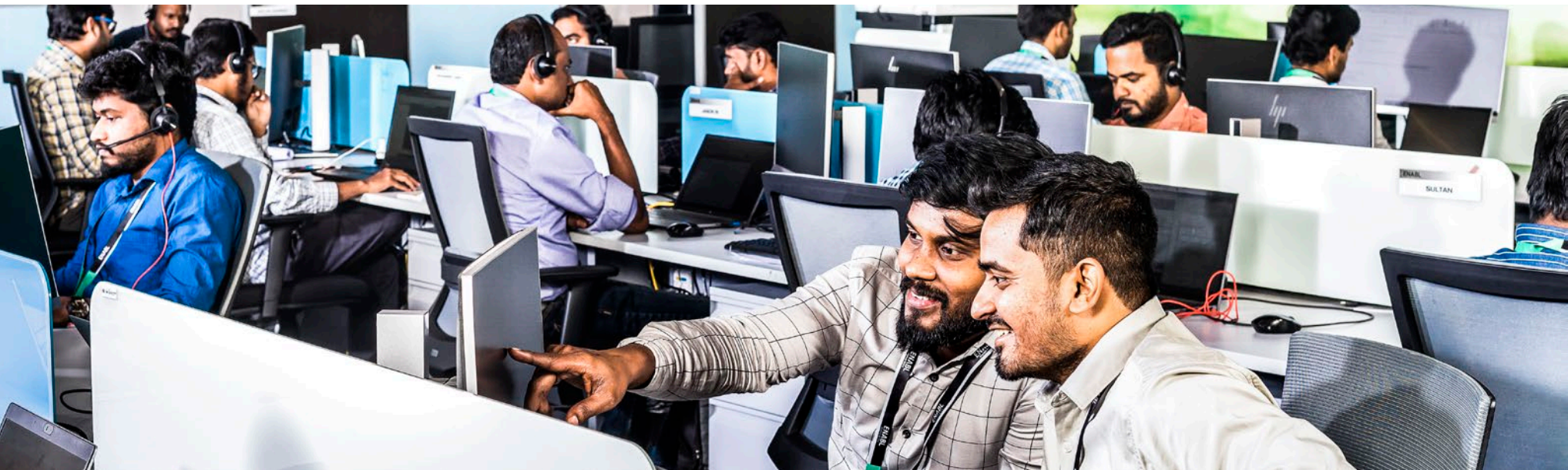
Our engineering services consist of a broad and constantly growing group of highly skilled Engineers with wind industry expertise. They deliver directly into the systems and processes in your business.

## Supplier Partnership

ENABL Supplier Partnership is a way for you to support a rapid company change, enabling you to adapt to market requirements and needs. ENABL can help bridge gaps by scaling your global capabilities, being your design house, improving quality, being your partner in innovation, and much more.

## Full Value Chain

You can outsource the full value chain scope and accountability or part of the value chain deliverables. This allows you to focus on what the core of your business is and thereby outsource complexity and non-core activities while reducing costs.







Equipment

# Tower & Monopile

We develop turnkey solutions for the production of onshore/offshore towers and monopiles. Solutions that provide the highest possible output in your production, where you reach a stronger position in the market.





## Multi-Seam Welding Station

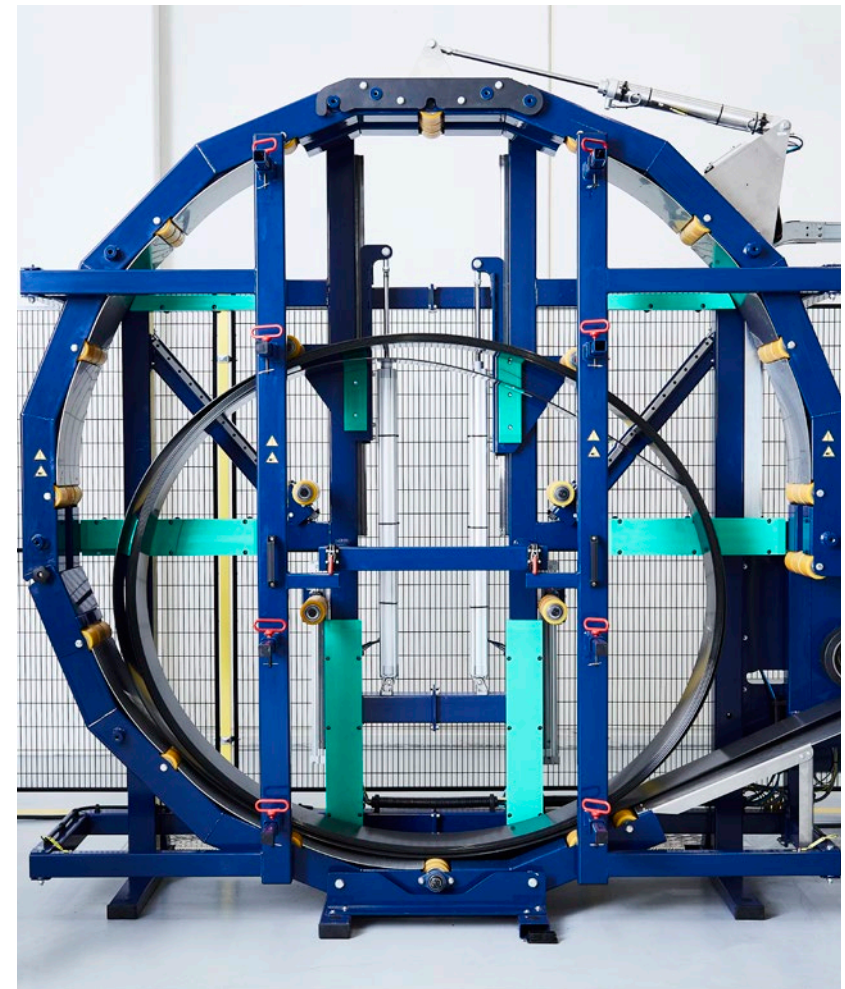
### **Your benefits**

- Innovative and state-of-the-art solutions
- Increased welding quality
- Reduced man-hours
- High productivity performance
- Cost-efficient solutions

Equipment

# Blade, Nacelle, & Test

Equipment within upgrades and automation of the production of blades and nacelles, and test equipment for wind turbine components. World-class equipment covers the next generation of productions and ensures you a safe, efficient, and cost-efficient operation.





## Semi-Automatic Sander with Blade Cleaner



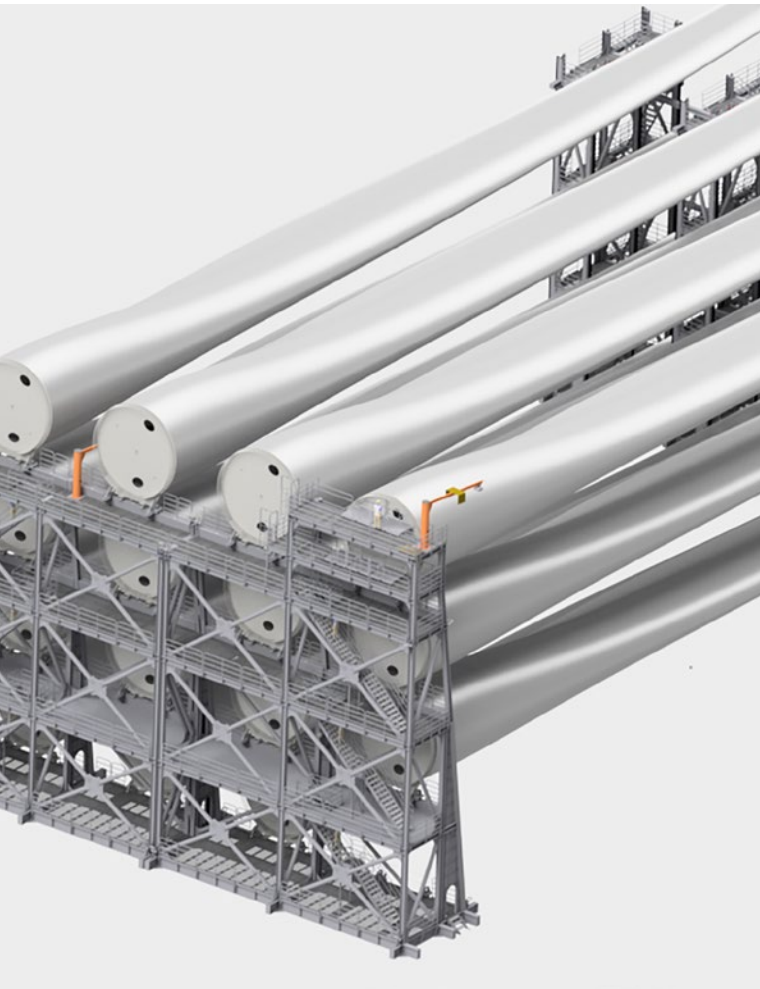
### **Your benefits**

- Innovative and high-end engineered solutions
- Mobile, automated, and easy-to-relocate equipment
- Reduced man-hours
- High productivity performance
- Improved safety and working environment

Equipment

# Transport, Installation, & Service

State-of-the-art engineered solutions and tools for efficient handling of blades, tower sections and nacelles - onshore and offshore. Equipment for increased safety during transport, installation and service. We target our equipment to operate during high wind speeds ensuring less downtime and reduced installation costs.





Patented Tagline  
Master System

## ■ Your benefits

- Increased safety
- Increased weather window during installation
- Reduced installation costs
- Reduced man-hours
- Faster transport, installation, and service

# Service

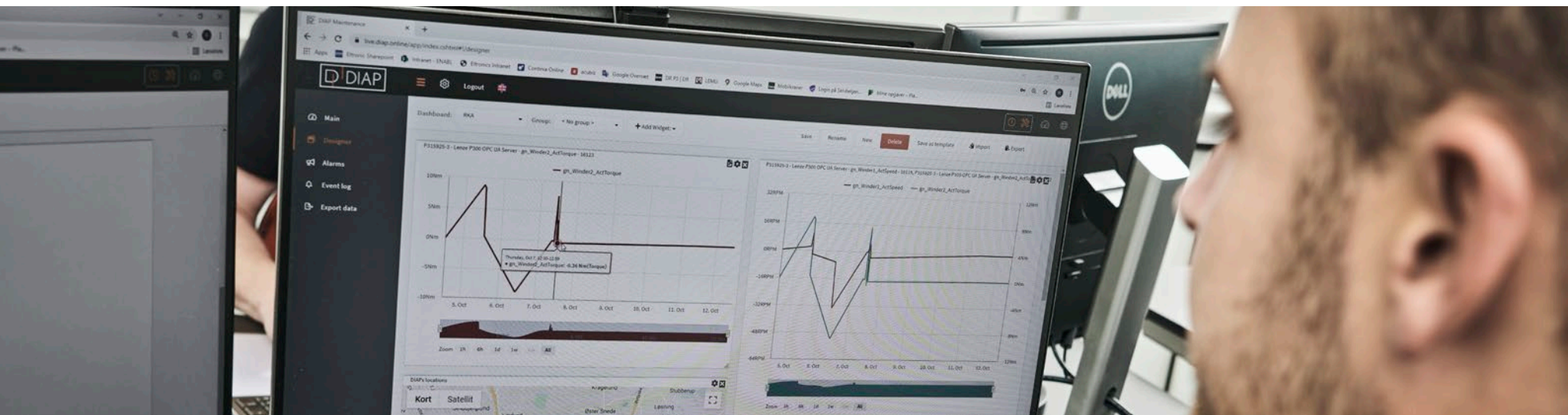
Our engineers and supervisors are committed to ensure increased availability of your equipment and safe operation. We know it is crucial for you. Our service solutions include a large variety of service solutions adapted and customized to your exact needs. We provide support locally and globally wherever wind is. And we target a reduced total cost of ownership.

## Service Solutions

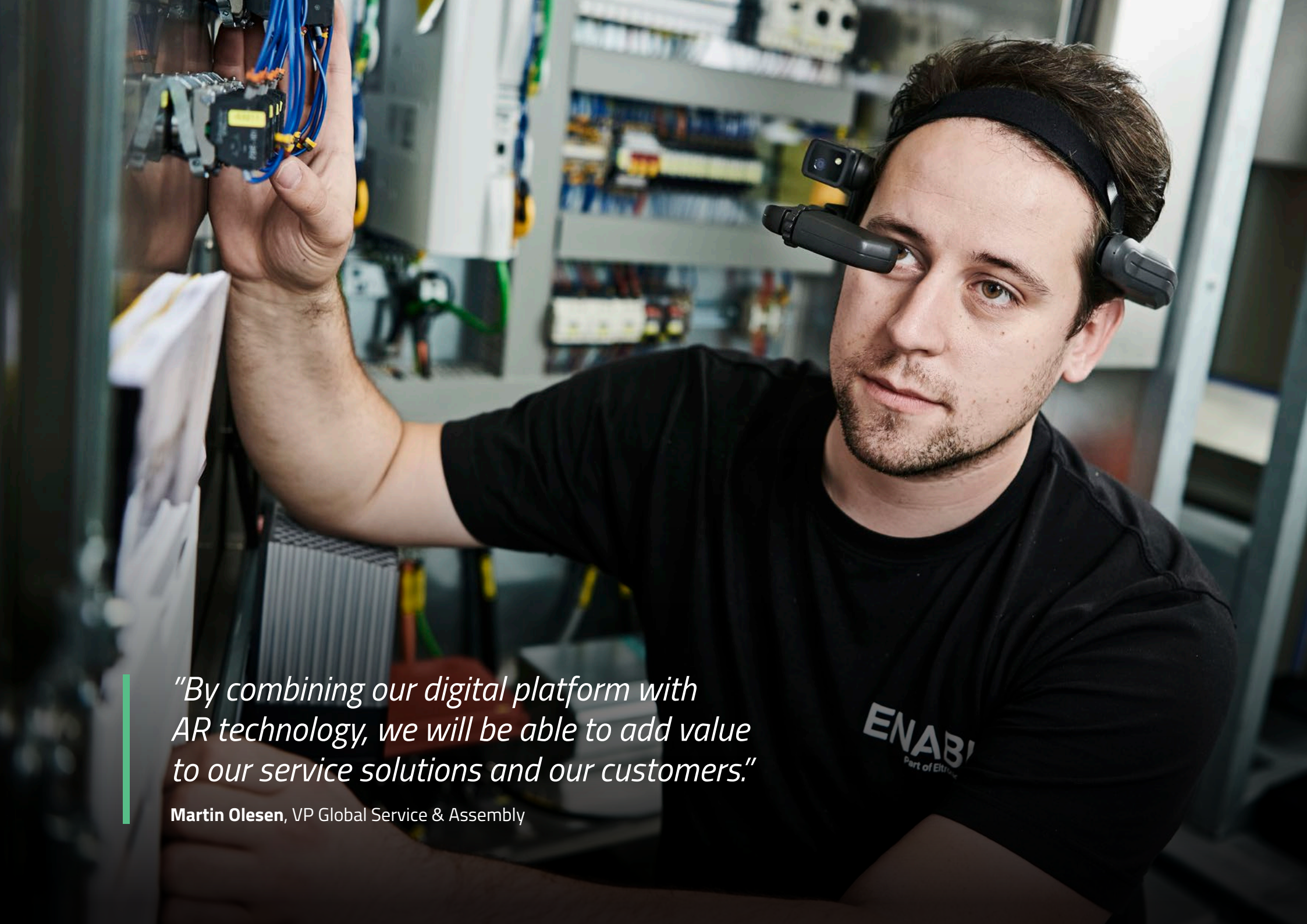
- Preventive & Corrective Maintenance
- 24/7 Hotline
- Spare Parts
- Equipment Rental / Storage
- Training & Certification
- Site Solutions
- Equipment Operator
- Mobilizations / Demobilizations
- Equipment Relocation
- Technical installation support

## Digital Service Solutions

- Condition-based Maintenance
- 24/7 Remote "onsite" Support
- Remote Operator Support
- Downtime Analysis
- Performance Analysis





A man with dark hair and a goatee, wearing a black t-shirt with the ENAB logo, is wearing an AR headset. He is holding a circuit board with blue wires in his right hand. The background shows server racks in a data center.

*"By combining our digital platform with AR technology, we will be able to add value to our service solutions and our customers."*

**Martin Olesen**, VP Global Service & Assembly

# Sustainability

We are ambitious when it comes to sustainability at ENABL. Our aim is to become more data driven and deliver useful data of the impact of our products and services.

As a company in the wind industry, ENABL supports the green transition and we are working towards a more transparent approach. It gives us the possibility to provide you with more documentation.

By being transparent, ENABL offers the opportunity to see directly into the data showing the climate impact when purchasing from us. We want to support you in taking objective and sustainable decisions.

ENABL is part of the Momentum Network for suppliers to the wind turbine OEM's focusing on innovation and sustainability.



Read Eltronic Group  
Sustainability report  
2021 - 2022



# QHSE

To ensure a high level of quality for all the solutions we supply, we have a thoroughly prepared quality management system, including procedures, instructions, templates, and tools. Our quality management system is based on ISO standards, and we are certified according to ISO 9001, 14001, and 45001.

## ISO 9001

### Quality in Everything We Do

All employees have full access to our quality management system. To ensure consistency in the way we execute projects and do business, we make sure that all new employees receive thorough training in both our quality management system as well as our project model.



## ISO 14001

### We Care for the Environment

To ensure that we will be able to meet future needs without compromising the environment, ENABL is certified according to ISO 14001 – Environmental Management. The ISO 14001 certification provides us with a basis for our active work with sustainability as we focus on life cycle management as an integrated part of our procedures and deliverables.

## ISO 45001

### Safety and Working Environment Go Hand in Hand

At ENABL, we integrate health and safety as a natural part of our daily work. We are committed to ensuring that all solutions supplied by ENABL are safe to operate, and that they meet all regulatory requirements and standards.

Who's Got Wind Covered





**Wherever Wind Is**

### Denmark

Hedensted – Headquarters  
Kilde Allé 4  
DK-8722 Hedensted

Ikast  
Lene Haus Vej 21  
DK-7430 Ikast

Aarhus  
Tangen 17  
DK-8200 Aarhus N

Varde  
Engdraget 20  
DK-6800 Varde

### United Kingdom

Hull  
Unit 6, Brighton Street Industrial Estate,  
Freightliner Road  
UK-Hull – HU3 4UW

### Taiwan

Taichung City  
No. 8, Gongyequ 33rd Rd.  
TW-Xitun Dist. Taichung City 40768

### United States

Gainesville  
576 NE 23RD Ave,  
US-Gainesville, FL 32609

### Ukraine

Odesa City  
8-A Topolynyi Lane  
UA-Odesa City, 65062

### China

Shanghai  
3/F. No. 139 Road (No.1)  
CN-20020 Shanghai

Kharkiv City  
10 Pavlivska square  
UA-Kharkiv City, 61003

### Bulgaria

Sofia  
2 Knyaginya Maria Luiza Blvd.  
BG-1000 Sofia

### India

Chennai  
2/88, SM Tower LLP,  
OMR, Seevaram,  
IN-Perungudi, Chennai – 600 096

### Part of Eltronic Group

[eltronic-group.com](http://eltronic-group.com)

# ENABL

ENABL A/S  
Kilde Allé 4  
DK-8722 Hedensted

+45 8830 1100  
wind@enabl.dk

Visit our  
website

