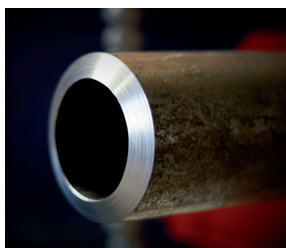


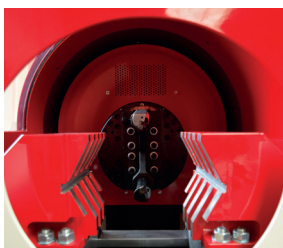
EXPERT IN PIPE MACHINING SOLUTIONS

GENERAL BROCHURE

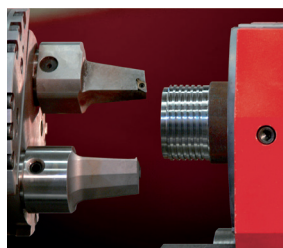
SCAN FOR THE
DIGITAL VERSION!



BEVELING



END WORKING



THREADING



ROLL GROOVING



WELDING

COPIER MACHINERY AT A GLANCE

Copier Machinery designs, engineers, manufactures, and supplies pipe machinery for demanding applications across various industries globally. Our in-house capabilities and customer-centric approach drive us to adopt new technologies and developments in providing the best solution to our clients.

A world map with a dark grey background. Countries are highlighted in red and orange. The highlighted areas include North America (USA, Canada), South America (Brazil, Chile, Argentina), Europe (UK, France, Germany, Italy, Spain, Portugal, Greece, Turkey, Russia), and parts of Africa and Asia.

40

OPERATING COUNTRIES

450

COMPLETED PROJECTS

400+

SATISFIED CUSTOMERS

5000000+

MACHINED PIPES

We are dedicated to providing the best solution for metal pipe fabrication, along with rapid service and support worldwide. We have a wide range of product portfolios for pipe cutting, beveling, end working, welding, and roll grooving with an emphasis on innovation, stability, reliability, and high quality.

Our expertise lies in machinery for industrial pipe preparations. We are specialized in Rotating Tool Lathes (RTL) that operate oppositely compared to the traditional tool lathes: the workpiece is fixed and the tool is rotating. The ambition of

identifying and analyzing the problems of our clients and offering a solution accordingly is our main key to success. Our experienced team is ready to meet any clients' requirements and is committed to providing premium customer service in meeting the highest safety and environmental standards.

We are not only providing a machine but a complete solution. To do so, our standard machines can be modified according to your complex pipe preparation requirements. By means of our market knowledge, experience, customer-centric approach, and resources we have successfully delivered over 400 pipe preparation machinery to more than 40 countries.



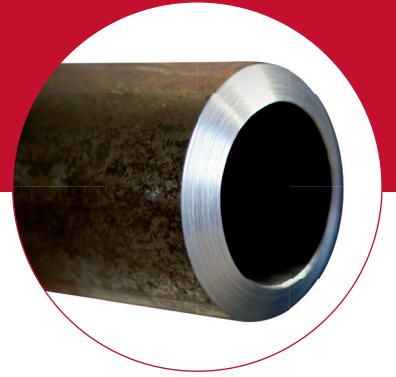
“

We are not only providing a machine but a complete solution.



PIPE BEVELING

Copier manufactures stationary pipe beveling machines that are fast, accurate, and durable. The machines are also suitable for high production volumes. The range of pipe beveling machines differs by the diameter of the pipes, the volume of production, pipe material, the requirements, and tolerances for bevel shapes. Also, they can be equipped with infeed and outfeed pipe handling systems that would boost your production!



Beaver S Series

- Operates with form tools
- Suitable for pipes with an OD from 0.25" up to 56"
- Up to 25mm wall thickness in one pass
- Manual and (semi-)automatic control options.



Beaver CB Series

- Single point machining
- Radial and axial feeding
- Suitable for pipes with an OD from 1" up to 56"
- Two operations in one step: pipe cutting, and beveling



Beaver CNC Series

- Single point machining
- Radial and axial feeding
- Suitable for pipes with an OD from 1" up to 56"
- Multiple machining options with one tool: pipe beveling, facing, squaring, deburring, tapering, cut grooving and threading

Beveling Related Industries

Pipe spool fabrication, pipe mill, pipe piling, marine and offshore, hydraulic cylinder production, industrial boilers and others.

WHICH MACHINE FITS YOUR BUSINESS?

BEAVER S MANUAL IS SUITABLE WHEN:

- ✓ The batch sizes are relatively small
- ✓ The diameter range of the pipes that need to be machined is 0.25" – 16" (12mm – 410mm)
- ✓ The maximum wall thickness is 25mm (if the wall thickness is > 25mm: multi-step beveling)
- ✓ The production volume is relatively low

BEAVER S AUTOMATIC IS SUITABLE WHEN:

- ✓ The batch sizes are large
- ✓ The diameter range of the pipes that need to be machined is 0.25" – 56" (12mm – 1450mm)
- ✓ The maximum wall thickness is 25mm (if the wall thickness is > 25mm: multi-step beveling)
- ✓ The production volume is high

BEAVER CNC IS SUITABLE WHEN:

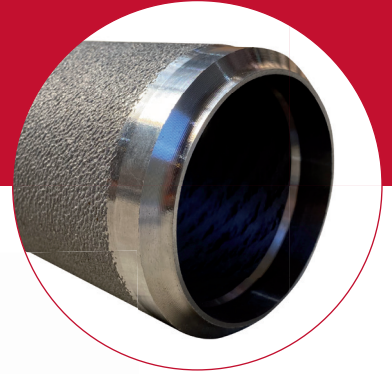
- ✓ The diameter range of the pipes that need to be machined is 1" – 56" (33mm – 1450mm)
- ✓ The pipe material is relatively tougher (duplex, and super duplex)
- ✓ The batches require different shapes or applications, CNC increases the flexibility
- ✓ The wall thickness is unlimited

BEAVER CB IS SUITABLE WHEN:

- ✓ Multiple applications for the end product are needed
- ✓ The diameter range of the pipes that need to be machined is 1" – 56" (33mm – 1450mm)
- ✓ The production volume is high

PIPE END WORKING

Our solution is the RTL (Rotating Tool Lathe), which machines in the opposite way of traditional lathes: the tube is fixed and the tool is rotating. It speeds up the set-up process and allows you to machine round workpieces up to OD 323 mm. The most important feature of the RTL series is accuracy.



RTL Z

- Operates with form tools
- Suitable for pipes with an OD from 115mm up to 323mm
- Highly suitable for bearing seats and other round workpieces to prepare them for laser or plasma welding
- Shorter cycle times compared to Beaver S
- Ensures the accuracy between IT8 and IT10

End Working Related Industries

Pipe spool fabrication, pipe mill, pipe piling, marine & off-shore, fire sprinklers, hydraulic cylinder, automotive, industrial boilers, and others.



Bevels in a shorter time and ensures the accuracy between IT7 and IT9.

RTL ZX

- Single point machining
- Radial and axial feeding
- Suitable for pipes with an OD from 10mm up to 323mm
- Multiple machining options with one tool: as beveling, chamfering, facing, threading, tapping, deburring, cut grooving, drilling, and centring
- Shorter cycle times compared to Beaver CNC
- Ensures the accuracy between IT7 and IT9

WHICH MACHINE FITS YOUR BUSINESS?

RTL Z IS SUITABLE WHEN:

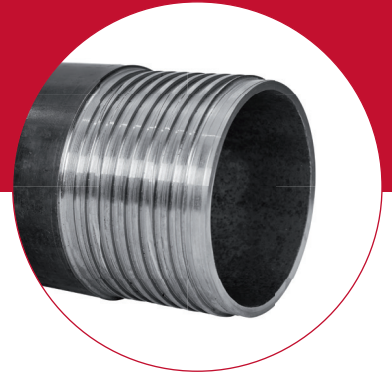
- ✓ The diameter range of the pipes that need to be machined is 0.5" – 12" (21mm – 323mm)
- ✓ The batch sizes vary from small to large
- ✓ The accuracy needs to be within IT8 – IT10
- ✓ Higher surface roughness quality is required
- ✓ The wall thickness of the pipes is light, the maximum WT in one pass is 12mm

RTL ZX IS SUITABLE WHEN:

- ✓ The diameter range of the pipes that need to be machined is 1" – 12" (33mm – 323mm)
- ✓ The batches require different shapes or applications, CNC increases the flexibility
- ✓ The accuracy needs to be within IT7 – IT9
- ✓ Higher surface roughness quality is required
- ✓ The pipe material is relatively tough (carbon steel alloys, duplex, and super duplex)
- ✓ You work with both thin and thick-walled pipes

PIPE THREADING

Our pipe threading machines have radial and axial feeding which enable the user to adjust the tool holder positions to create different shapes during the machining process. It removes material to get the contours of the thread based on the dimensions and tolerances specified in a standard required by the operator. The CNC control system can store pre-set shapes to be used in the upcoming operations.



Beaver CNC Series

- Single point machining
- Radial and axial feeding
- Suitable for pipes with an OD from 1" up to 56"
- Multiple machining options with one tool: pipe beveling, facing, squaring, deburring, tapering, and threading
- Ensures accuracy between IT 8 – IT 10

RTL ZX

- Single point machining
- Radial and axial feeding
- Suitable for pipes with an OD from 115mm up to 323mm
- Multiple machining options with one tool: as beveling, chamfering, facing, threading, tapping, deburring, cut grooving, drilling, and centring
- Shorter cycle times compared to Beaver CNC
- Ensures the accuracy between IT7 and IT9



Threading Related Industries

Pipe piling, hydraulic cylinder production, oil and gas, and others.

WHICH MACHINE FITS YOUR BUSINESS?

BEAVER CNC

IS SUITABLE WHEN:

- ✓ The diameter range of the pipes that need to be operated is 1" – 56" (33mm – 1450mm)
- ✓ The pipe material is relatively tougher (duplex, and super duplex)
- ✓ The batches require different shapes or applications, CNC increases the flexibility
- ✓ The accuracy needs to be within IT8 – IT10
- ✓ The wall thickness is unlimited

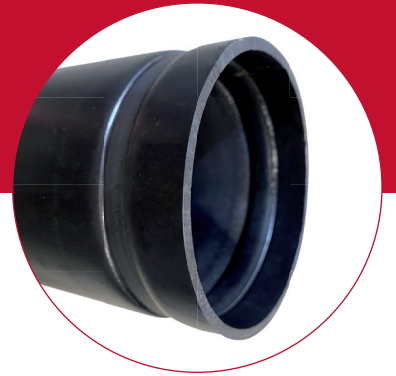
RTL ZX

IS SUITABLE WHEN:

- ✓ The diameter range of the pipes that need to be operated is 1" – 12" (33mm – 323mm)
- ✓ The batches require different shapes or applications, CNC increases the flexibility
- ✓ The accuracy needs to be within IT7 – IT9
- ✓ Higher surface roughness quality is required
- ✓ The material of the pipes is relatively tougher such as carbon steel alloys, duplex, and super duplex
- ✓ You work with both thin and thick-walled pipes

PIPE ROLL GROOVING

The pipe roll grooving machines that we manufacture work electro-mechanically and are built in a very robust and stable way for stationary use. Based on both our and our customers' experience, the electromechanical pipe roll grooving machines are more durable compared to the electro-hydraulic principle. We focus on high-quality machinery for industrial use only that can operate for many years.



Groove Master

- Suitable for pipes with an OD from 0.75" up to 24"
- Electro-mechanical drive system controlled by IPC
- Easy to use, short set-up time

Roll Grooving Cell

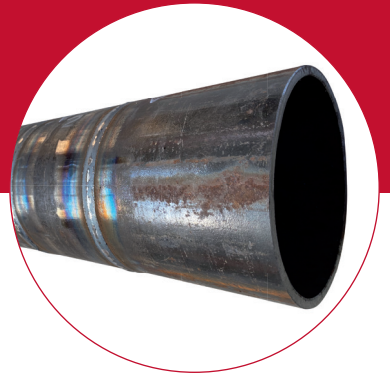
- Speeds up your grooving process
- Pipe handling included
- Can be integrated with ERP

Roll Grooving Related Industries

Fire sprinklers, irrigation, and others.

PIPE WELDING

The Rotoweld 3.0 is a fully-automated work cell developed specifically for industrial pipe prefabrication, small pressure vessel manufacturing, or another similar 1G welding. It integrates machine vision, adaptive control, and robotic technology in a dedicated package that produces high-quality, full-penetration 1G girth welds five times faster than manual SMAW.



Five times
faster than
manual SMAW.

Pipe Welding Related Industries

Pipe spool fabrication, marine & offshore, and others.

Rotoweld 3.0

- 1 min./inch dia for standard wall pipes
- 1.5 min./inch dia for heavy wall pipes
- A unique patented technology that features all welding parameters in a single joystick command
- Single, twin bay or heavy-duty models

nom	OD "	wall	wall thickness "	ID "	DN	OD mm	wth mm	ID mm
1/8"	0,405	10, 10S	0,049	0,307	6	10,3	1,24	7,8
	0,405	40, STD, 40S	0,068	0,269		10,3	1,73	6,8
	0,405	80, XS, 80S	0,095	0,215		10,3	2,41	5,5
1/4"	0,540	10, 10S	0,065	0,410	8	13,7	1,65	10,4
	0,540	40, STD, 40S	0,088	0,364		13,7	2,24	9,2
	0,540	80, XS, 80S	0,119	0,302		13,7	3,02	7,7
3/8"	0,675	10, 10S	0,065	0,545	10	17,1	1,65	13,8
	0,675	40, STD, 40S	0,091	0,493		17,1	2,31	12,5
	0,675	80, XS, 80S	0,126	0,423		17,1	3,20	10,7
1/2"	0,840	5S	0,060	0,720	15	21,3	1,52	18,3
	0,840	10, 10S	0,083	0,674		21,3	2,11	17,1
	0,840	40, STD, 40S	0,109	0,622		21,3	2,77	15,8
	0,840	80, XS, 80S	0,147	0,546		21,3	3,73	13,9
	0,840	160	0,190	0,460		21,3	4,83	11,7
	0,840	XXS	0,290	0,260		21,3	7,37	6,6
3/4"	1,050	5S	0,060	0,930	20	26,7	1,52	23,6
	1,050	10, 10S	0,083	0,884		26,7	2,11	22,5
	1,050	40, STD, 40S	0,113	0,824		26,7	2,87	20,9
	1,050	80, XS, 80S	0,154	0,742		26,7	3,91	18,8
	1,050	160	0,220	0,610		26,7	5,59	15,5
	1,050	XXS	0,310	0,430		26,7	7,87	10,9
1"	1,315	5S	0,060	1,195	25	33,4	1,52	30,4
	1,315	10, 10S	0,109	1,097		33,4	2,77	27,9
	1,315	40, STD, 40S	0,133	1,049		33,4	3,38	26,6
	1,315	80, XS, 80S	0,179	0,957		33,4	4,55	24,3
	1,315	160	0,250	0,815		33,4	6,35	20,7
	1,315	XXS	0,360	0,595		33,4	9,14	15,1
1 1/4"	1,660	5S	0,060	1,540	32	42,2	1,52	39,1
	1,660	10, 10S	0,109	1,442		42,2	2,77	36,6
	1,660	40, STD, 40S	0,140	1,380		42,2	3,56	35,1
	1,660	80, XS, 80S	0,191	1,278		42,2	4,85	32,5
	1,660	160	0,250	1,160		42,2	6,35	29,5
	1,660	XXS	0,380	0,900		42,2	9,65	22,9
1 1/2"	1,900	5S	0,060	1,780	40	48,3	1,52	45,2
	1,900	10, 10S	0,109	1,682		48,3	2,77	42,7
	1,900	40, STD, 40S	0,145	1,610		48,3	3,68	40,9
	1,900	80, XS, 80S	0,200	1,500		48,3	5,08	38,1
	1,900	160	0,280	1,340		48,3	7,11	34,0
	1,900	XXS	0,400	1,100		48,3	10,16	27,9
2"	2,375	5S	0,060	2,255	50	60,3	1,52	57,3
	2,375	10,10S	0,109	2,157		60,3	2,77	54,8
	2,375	40, STD, 40S	0,154	2,067		60,3	3,91	52,5
	2,375	80, XS, 80S	0,218	1,939		60,3	5,54	49,3
	2,375	160	0,340	1,695		60,3	8,64	43,1
	2,375	XXS	0,440	1,495		60,3	11,18	38,0
2 1/2"	2,875	5S	0,080	2,715	65	73,0	2,03	69,0
	2,875	10, 10S	0,120	2,635		73,0	3,05	66,9
	2,875	40, STD, 40S	0,203	2,469		73,0	5,16	62,7
	2,875	80, XS, 80S	0,276	2,323		73,0	7,01	59,0
	2,875	160	0,380	2,115		73,0	9,65	53,7
	2,875	XXS	0,550	1,775		73,0	13,97	45,1
3"	3,500	5S	0,080	3,340	80	88,9	2,03	84,8
	3,500	10, 10S	0,120	3,260		88,9	3,05	82,8
	3,500	40, STD, 40S	0,216	3,068		88,9	5,49	77,9
	3,500	80, XS, 80S	0,300	2,900		88,9	7,62	73,7
	3,500	160	0,440	2,620		88,9	11,18	66,5
	3,500	XXS	0,500	2,500		88,9	12,70	63,5

nom	OD "	wall	wall thickness "	ID "	DN	OD mm	wth mm	ID mm
3 1/2"	4,000	5S	0,080	3,840	90	101,6	2,03	97,5
	4,000	10, 10S	0,120	3,760		101,6	3,05	95,5
	4,000	40, STD, 40S	0,226	3,548		101,6	5,74	90,1
	4,000	80, XS, 80S	0,318	3,364		101,6	8,08	85,4
4"	4,500	5S	0,080	4,340	100	114,3	2,03	110,2
	4,500	10, 10S	0,120	4,260		114,3	3,05	108,2
	4,500	40, STD, 40S	0,237	4,026		114,3	6,02	102,3
	4,500	80, XS, 80S	0,337	3,826		114,3	8,56	97,2
	4,500	120	0,440	3,620		114,3	11,18	91,9
	4,500	160	0,530	3,440		114,3	13,46	87,4
	4,500	XXS	0,670	3,160		114,3	17,02	80,3
4 1/2"	5,000	40, STD, 40S	0,247	4,506		127,0	6,27	114,5
	5,000	80, XS, 80S	0,355	4,290		127,0	9,02	109,0
5"	5,563	5S	0,110	5,343	125	141,3	2,79	135,7
	5,563	10, 10S	0,134	5,295		141,3	3,40	134,5
	5,563	40, STD, 40S	0,258	5,047		141,3	6,55	128,2
	5,563	80, XS, 80S	0,375	4,813		141,3	9,53	122,3
	5,563	120	0,500	4,563		141,3	12,70	115,9
	5,563	160	0,630	4,303		141,3	16,00	109,3
	5,563	XXS	0,750	4,063		141,3	19,05	103,2
6"	6,625	5S	0,110	6,405	150	168,3	2,79	162,7
	6,625	10, 10S	0,134	6,357		168,3	3,40	161,5
	6,625	40, STD, 40S	0,280	6,065		168,3	7,11	154,1
	6,625	80, XS, 80S	0,432	5,761		168,3	10,97	146,3
	6,625	120	0,560	5,505		168,3	14,22	139,8
	6,625	160	0,720	5,185		168,3	18,29	131,7
	6,625	XXS	0,860	4,905		168,3	21,84	124,6
8"	8,625	5S	0,110	8,405	200	219,1	2,79	213,5
	8,625	10, 10S	0,148	8,329		219,1	3,76	211,6
	8,625	20	0,250	8,125		219,1	6,35	206,4
	8,625	30	0,277	8,071		219,1	7,04	205,0
	8,625	40, STD, 40S	0,322	7,981		219,1	8,18	202,7
	8,625	60	0,406	7,813		219,1	10,31	198,5
	8,625	80, XS, 80S	0,500	7,625		219,1	12,70	193,7
	8,625	100	0,59	7,445		219,1	14,99	189,1
	8,625	120	0,720	7,185		219,1	18,29	182,5
	8,625	140	0,810	7,005		219,1	20,57	177,9
	8,625	XXS	0,880	6,865		219,1	22,35	174,4
	8,625	160	0,910	6,805		219,1	23,11	172,8
10"	10,750	5S	0,130	10,490	250	273,1	3,30	266,4
	10,750	10S	0,165	10,420		273,1	4,19	264,7
	10,750	20	0,250	10,250		273,1	6,35	260,4
	10,750	30	0,307	10,136		273,1	7,80	257,5
	10,750	40, STD, 40S	0,365	10,020		273,1	9,27	254,5
	10,750	60, XS, 80S	0,500	9,750		273,1	12,70	247,7
	10,750	80	0,594	9,562		273,1	15,09	242,9
	10,750	100	0,720	9,310		273,1	18,29	236,5
	10,750	120	0,840	9,070		273,1	21,34	230,4
	10,750	140, XXS	1,000	8,750		273,1	25,40	222,3
	10,750	160	1,130	8,490		273,1	28,70	215,6
12"	12,750	5S	0,160	12,430	300	323,9	4,06	315,7
	12,750	10S	0,180	12,390		323,9	4,57	314,7
	12,750	20	0,250	12,250		323,9	6,35	311,2
	12,750	30	0,330	12,090		323,9	8,38	307,1
	12,750	ST, 40S	0,375	12,000		323,9	9,53	304,8
	12,750	40	0,406	11,938		323,9	10,31	303,2

nom	OD "	wall	wall thickness	ID "	DN	OD mm	wth mm	ID mm
12"	12,750	XS, 80S	0,500	11,750	300	323,9	12,70	298,5
	12,750	60	0,562	11,626		323,9	14,27	295,3
	12,750	80	0,688	11,374		323,9	17,48	288,9
	12,750	100	0,840	11,070		323,9	21,34	281,2
	12,750	120, XXS	1,000	10,750		323,9	25,40	273,1
	12,750	140	1,130	10,490		323,9	28,70	266,4
	12,750	160	1,310	10,130		323,9	33,27	257,3
14"	14,000	5S	0,160	13,680	350	355,6	4,06	347,5
	14,000	10	0,250	13,500		355,6	6,35	342,9
	14,000	20	0,312	13,376		355,6	7,92	339,8
	14,000	30, STD, 40S	0,375	13,250		355,6	9,53	336,6
	14,000	40	0,438	13,124		355,6	11,13	333,3
	14,000	XS, 80S	0,500	13,000		355,6	12,70	330,2
	14,000	60	0,594	12,812		355,6	15,09	325,4
	14,000	80	0,750	12,500		355,6	19,05	317,5
	14,000	100	0,940	12,120		355,6	23,88	307,8
	14,000	120	1,090	11,820		355,6	27,69	300,2
	14,000	140	1,250	11,500		355,6	31,75	292,1
	14,000	160	1,410	11,180		355,6	35,81	284,0
	16"	16,000	5S	0,160		15,680	400	406,4
16,000		10S	0,190	15,620	406,4	4,83		396,7
16,000		10	0,250	15,500	406,4	6,35		393,7
16,000		20	0,312	15,376	406,4	7,92		390,6
16,000		30, STD, 40S	0,375	15,250	406,4	9,53		387,4
16,000		40, XS, 80S	0,500	15,000	406,4	12,70		381,0
16,000		60	0,660	14,680	406,4	16,76		372,9
16,000		80	0,844	14,312	406,4	21,44		363,5
16,000		100	1,030	13,940	406,4	26,16		354,1
16,000		120	1,220	13,560	406,4	30,99		344,4
16,000		140	1,440	13,120	406,4	36,58		333,2
16,000		160	1,590	12,820	406,4	40,39		325,6
18"	18,000	5S	0,160	17,680	450	457,2	4,06	449,1
	18,000	10	0,250	17,500		457,2	6,35	444,5
	18,000	20	0,312	17,376		457,2	7,92	441,4
	18,000	ST, 40S	0,375	17,250		457,2	9,53	438,2
	18,000	30	0,438	17,124		457,2	11,13	434,9
	18,000	XS, 80S	0,500	17,000		457,2	12,70	431,8
	18,000	40	0,562	16,876		457,2	14,27	428,7
	18,000	60	0,750	16,500		457,2	19,05	419,1
	18,000	80	0,938	16,124		457,2	23,83	409,5
	18,000	100	1,150	15,700		457,2	29,21	398,8
	18,000	120	1,380	15,240		457,2	35,05	387,1
	18,000	160	1,780	14,440		457,2	45,21	366,8
	20"	20,000	5S	0,190		19,620	500	508,0
20,000		10	0,250	19,500	508,0	6,35		495,3
20,000		20, STD, 40S	0,375	19,250	508,0	9,53		489,0
20,000		30, XS, 80S	0,500	19,000	508,0	12,70		482,6
20,000		40	0,594	18,812	508,0	15,09		477,8
20,000		60	0,812	18,376	508,0	20,62		466,8
20,000		80	1,031	17,938	508,0	26,19		455,6
20,000		100	1,280	17,440	508,0	32,51		443,0
20,000		120	1,500	17,000	508,0	38,10		431,8
20,000		140	1,750	16,500	508,0	44,45		419,1
20,000		160	1,970	16,060	508,0	50,04		407,9
22"		22,000	5S	0,190	21,620	500		558,8
	22,000	10	0,250	21,500	558,8		6,35	546,1
	22,000	20, STD	0,375	21,250	558,8		9,53	539,8

nom	OD "	wall	wall thickness	ID "	DN	OD mm	wth mm	ID mm
22"	22,000	30, XS	0,500	21,000	500	558,8	12,70	533,4
	22,000	60	0,880	20,240		558,8	22,34	514,1
	22,000	80	1,130	19,740		558,8	28,70	501,40
	22,000	100	1,380	19,240		558,8	35,05	488,7
	22,000	120	1,630	18,740		558,8	41,40	476,0
	22,000	140	1,880	18,240		558,8	47,75	463,3
	22,000	160	2,130	17,740		558,8	54,10	450,6
24"	24,000	5S	0,220	23,560	600	609,6	5,59	598,4
	24,000	10, 10S	0,250	23,500		609,6	6,35	596,9
	24,000	20, STD, 40S	0,375	23,250		609,6	9,53	590,6
	24,000	XS, 80S	0,500	23,000		609,6	12,70	584,2
	24,000	30	0,562	22,876		609,6	14,27	581,1
	24,000	40	0,688	22,624		609,6	17,48	574,6
	24,000	60	0,969	22,062		609,6	24,61	560,4
	24,000	80	1,219	21,562		609,6	30,96	547,7
	24,000	100	1,530	20,940		609,6	38,86	531,9
	24,000	120	1,810	20,380		609,6	45,97	517,7
	24,000	140	2,050	19,900		609,6	52,07	505,5
	24,000	160	2,340	19,320		609,6	59,44	490,7
	26"	26,000	10	0,312		25,376	600	660,4
26,000		STD	0,375	25,250	660,4	9,53		641,4
26,000		20, XH	0,500	25,000	660,4	12,70		635,0
28"	28,000	10	0,312	27,376	700	711,2	7,92	695,4
	28,000	STD	0,375	27,250		711,2	9,53	692,2
	28,000	20, XH	0,500	27,000		711,2	12,70	685,8
	28,000	30	0,625	26,750		711,2	15,88	679,5
30"	30,000	5S	0,250	29,500	700	762,0	6,35	749,3
	30,000	10S, 10	0,312	29,376		762,0	7,92	746,2
	30,000	STD, 40S	0,375	29,250		762,0	9,53	743,0
	30,000	20, XS, 80S	0,500	29,000		762,0	12,70	736,6
	30,000	30	0,625	28,750		762,0	15,88	730,3
32"	32,000	10	0,312	31,376	800	812,8	7,92	797,0
	32,000	STD	0,375	31,250		812,8	9,53	793,8
	32,000	20, XH	0,500	31,000		812,8	12,70	787,4
	32,000	30	0,625	30,750		812,8	15,88	781,1
	32,000	40	0,688	30,624		812,8	17,48	777,8
34"	34,000	10	0,312	33,376	800	863,6	7,92	847,8
	34,000	STD	0,375	33,250		863,6	9,53	844,6
	34,000	20, XH, XS	0,500	33,000		863,6	12,70	838,2
	34,000	30	0,625	32,750		863,6	15,88	831,9
	34,000	40	0,688	32,624		863,6	17,48	828,6
36"	36,000	10	0,312	35,376	900	914,4	7,92	898,6
	36,000	STD	0,375	35,250		914,4	9,53	895,4
	36,000	20, XH, XS	0,500	35,000		914,4	12,70	889,0
	36,000	30	0,625	34,750		914,4	15,88	882,7
	36,000	40	0,750	34,500		914,4	19,05	876,3
40"	40,000	STD, 40S	0,375	39,250	1000	1016,0	9,53	997,0
	40,000	XH, 40	0,500	39,000		1016,0	12,70	990,6
42"	42,000	STD	0,375	41,250	1000	1066,8	9,53	1047,8
	42,000	XH	0,500	41,000		1066,8	12,70	1041,4
46"	46,000	STD	0,375	45,250	1000	1168,4	9,53	1149,4
	46,000	XH	0,500	45,000		1168,4	12,70	1143,0
48"	48,000	ST, 40S	0,375	47,250	1000	1219,2	9,53	1200,2
	48,000	XS, 80S	0,500	47,000		1219,2	12,70	1193,8
54"	54,000	STD	0,375	53,250	1000	1371,6	9,53	1352,6
	54,000	XH	0,500	53,000		1371,6	12,70	1346,2
60"	60,000	STD	0,375	59,250	1000	1524,0	9,53	1505,0
	60,000	XH	0,500	59,000		1524,0	12,70	1498,6

**Are you facing a production challenge in your business?
Do you want to boost your production efficiency and quality?
Contact us to claim your 30 minutes free consultation, and
stay competitive in today's fabrication industry!**



HEADQUARTERS

Bedrijvenstraat 13
4283 JJ Giessen
The Netherlands

U.S. SALES OFFICE

Unit #3, 305 North Redbud
Broken Arrow OK 74012
United States of America


PHONE

NL: +31(0)183 44 13 13
USA: +1 918 520 23 07

E-MAIL

NL: sales@copierbv.com
USA: sales@copier-usa.com

 /company/copiermachinery

 /user/pipebevelingmachines

 www.copiermachinery.com

solid, sharp and state-of-the-art